

CERTIFIED LAND CORNER RESTORATION

Index No. N-12

State of Wisconsin }  
 County of LANGLADE } ss.

I WILLIAM F. KELLY, do hereby certify that on the 27<sup>th</sup> day of OCTOBER, 1982, I found evidence of the E 1/2 corner ON S. LINE, SECT. 16 Township 33, North, Range 13 EAST, Fourth Principal Meridian, as described hereon; and that from this evidence I established a new monument and accessories as described hereon to perpetuate the original location of this corner.

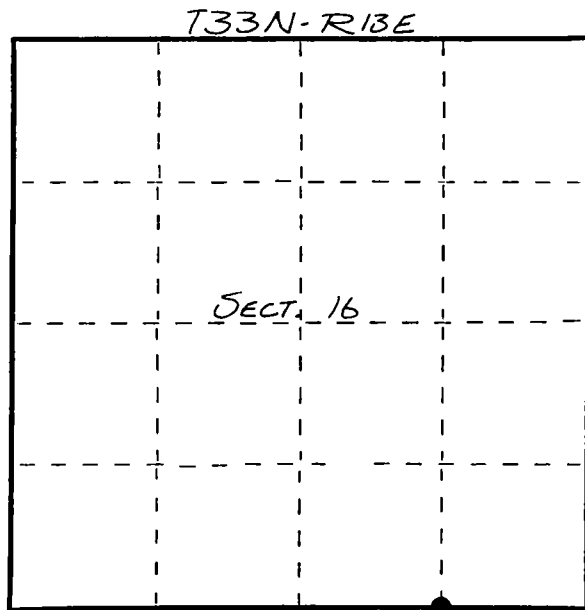
Resident witnesses:

.....

.....

.....

FORM 985 H. C. MILLER CO., MILWAUKEE



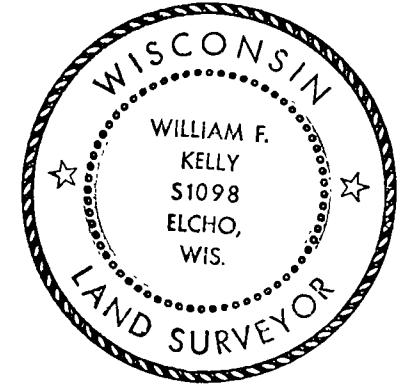
○ = Corner monument restored.

History of original corner establishment:

CORNER NOT ESTABLISHED DURING ORIGINAL GOV'T SURVEY.

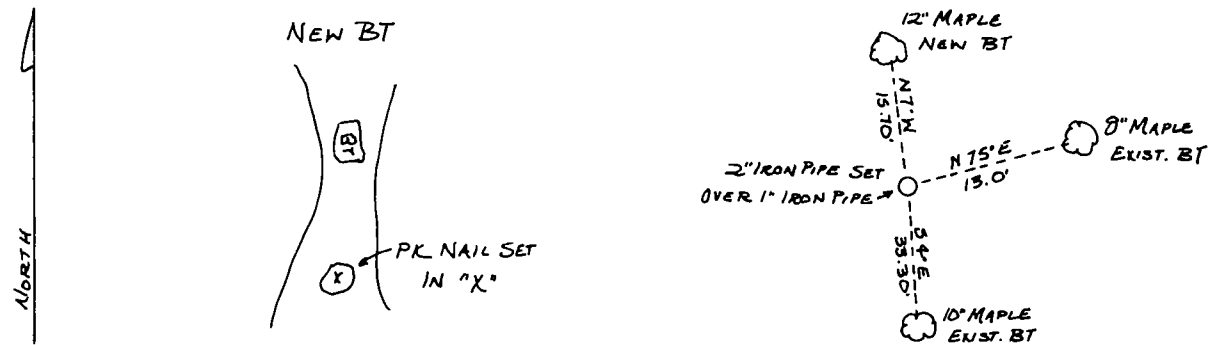
Description of corner evidence found:

COR. EST. FROM O.I. CONTROL SURVEY OF SECT 16 T33N R13E



William F. Kelly  
 12-12-82

Description of monument and accessories I established to perpetuate the original location of this corner.



Dated at ELCHO, Wis., this 27<sup>th</sup> day of OCTOBER, 1982.

Signature William F. Kelly Title COUNTY SURVEYOR Registration No. 1098  
 (County Surveyor, Registered Land Surveyor, or other duly authorized official)

Office of Register of Deeds, County of....., I hereby certify that the within instrument was filed in this office for record on the..... day of....., 19..... at..... o'clock..... M.

.....  
 (Register of Deeds)

By.....Deputy