

U.S. PUBLIC LAND SURVEY MONUMENT RECORD

4331315 2000

HISTORY OF ORIGINAL CORNER ESTABLISHMENT AND SUBSEQUENT RESTORATION AND DESCRIPTION OF ANY RECORD, MONUMENT OCCUPATIONAL, TESTIMONIAL OR OTHER EVIDENCE CONSIDERED:

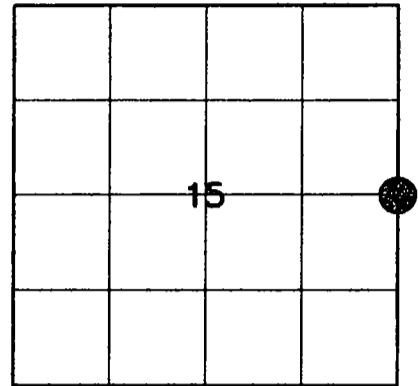
THE ORIGINAL CORNER WAS SET BY NOWLIN IN 1865. THE BEARING TREES WERE:

18" BIRCH WEST 14 LKS

15" BIRCH N 76°E, 42 LKS

THE AREA HAS BEEN PASTURED AND LOGGED, NO EVIDENCE OF BEARING TREES. HUTCHINSON RAN THE EAST - WEST 1/4 LINE OF SECTION 15 AND HAD A DISTANCE FROM THE CENTER TO THE EAST 1/4 OF SECTION 15 OF 2758.8 FEET. FOUND AN OLD FENCE NEAR THE CENTER OF 15 AND MEASURED BACK TO THE FENCE AT THE EAST 1/4 OF 15. ACCEPTED THE FENCE CORNER AS EVIDENCE OF THE 1/4 CORNER BASED ON HUTCHINSON'S DISTANCES. SET A 1.5" IRON PIPE 30" LONG AT THE BASE OF THE CORNER POST.

● = LOCATION OF CORNER



SECTION 15

TOWNSHIP 33 NORTH, RANGE 13 EAST

TOWN OF LANGLADE

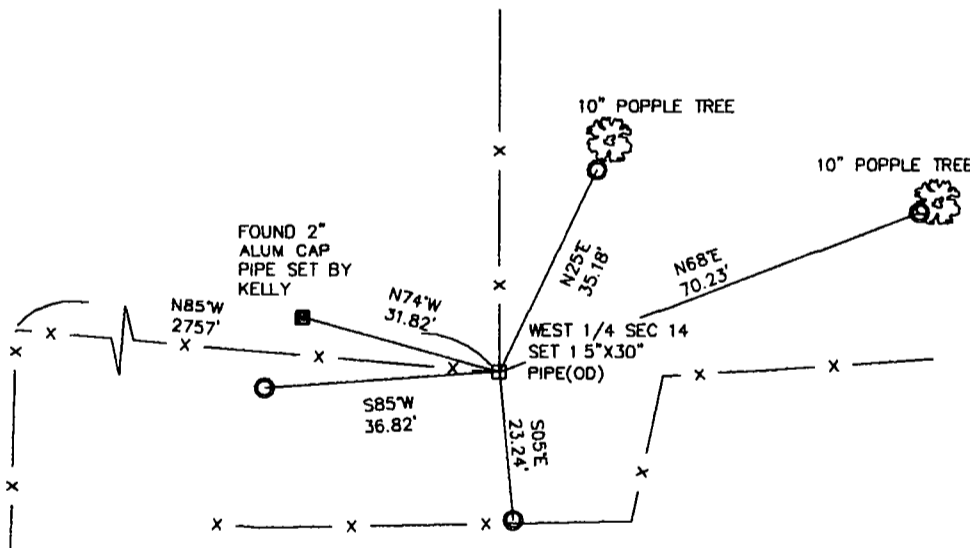
LANGLADE COUNTY, WISCONSIN

CORNER WAS: (CHECK ALL THAT APPLY)

- RESTORED THROUGH ACCEPTANCE OF AN OBLITERATED EVIDENCE LOCATION
- RESTORED THROUGH ACCEPTANCE OF A FOUND PERPETUATED LOCATION
- CONSIDERED A LOST CORNER AND REESTABLISHED THROUGH LOST CORNER PROPORTIONATE METHODS (INCLUDE A PLAN VIEW DRAWING SHOWING DISTANCES AND DIRECTIONS TO OTHER PUBLIC LAND SURVEY CORNERS USED FOR PROPORTIONING AND DETERMINING THE CORNER LOCATION)
- RESTORED OR REESTABLISHED IN A LOCATION THAT DIFFERS FROM A PREVIOUS RESTORATION OR REESTABLISHMENT (INCLUDE A PLAN VIEW DRAWING AND INDICATE WHAT WAS SET AND/OR FOUND)
- CHECK IF THERE IS ADDITIONAL INFORMATION ON BACK

DESCRIBE THE MONUMENT AND ACCESSORIES USED TO PERPETUATE THE LOCATION OF THE CORNER. (INCLUDE A PLAN VIEW DRAWING AND INDICATE WHAT WAS SET AND/OR FOUND) ALSO INCLUDE FOUR TIES TO THE SECTION CORNER AND DESCRIPTION OF THE TIES.

SET 1" X18" IRON PIPES
AT ALL TIE LOCATIONS



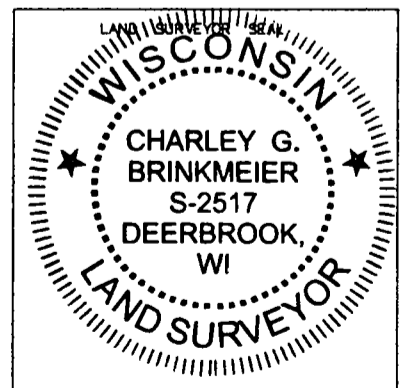
BEARING ARE BASED ON
MAGNETIC

CHARLEY G. BRINKMEIER

(type or print name) CERTIFY THAT THE CORNER LOCATION SHOWN ON THIS RECORD WAS DETERMINED BY ME OR UNDER MY DIRECTION AND CONTROL AND THAT THIS U.S. PUBLIC LAND SURVEY MONUMENT RECORD IS CORRECT AND COMPLETE TO THE BEST OF MY KNOWLEDGE AND BELIEF.

Charley Brinkmeier
SIGNATURE

10-14-04
DATE



INDEX NO. 717

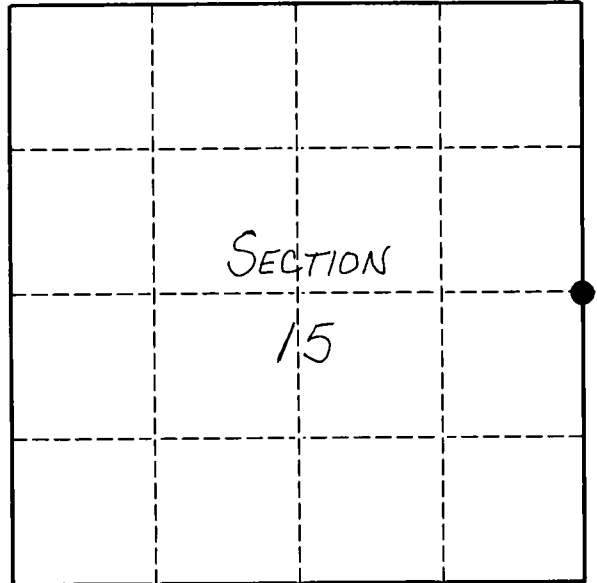
U. S. PUBLIC LAND SURVEY MONUMENT RECORD

INSTRUCTIONS:

This record shall show the location of the corner and shall include all of the following nine elements (a through i).

- (a) Identify the corner by reference to the U.S. public land survey system.
● = Corner monument restored.

ORIGINAL CORNER ESTABLISHED
By JAMES L. NOWLIN IN 1865.



T33N, R13E

- (b) Describe any record evidence, monument evidence, occupational evidence, testimonial evidence or any other material evidence you considered, and whether the monument was found or placed.

MONUMENT WAS PLACED AT MIDPOINT ON E. SECTION LINE.

- (c) In the plan view drawing below, provide reference ties to at least 4 witness monuments, or, if the location is within a municipality, to at least 2 witness monuments. (Witness monuments shall be made of concrete, natural stone, iron or other equally durable material.) Describe witness monuments.

- (d) Show a plan view drawing depicting the relevant monuments and reference ties which is sufficient in detail to enable accurate relocation of the corner monument if the corner monument is disturbed. Indicate north.

