

U.S. PUBLIC LAND SURVEY MONUMENT RECORD

(Prepared and as required by S. A-E 7.08 WI Administrative Code)

The North 1/4 corner of Section 14, T. 33 N., R. 13 E., Langlade County, WI

433/3110020

Corner was: Check all that apply

- Restored through acceptance of an obliterated evidence location.
- Restored through acceptance of a found perpetuated location.
- Determined to be lost and re-established through proportionate methods. (Show bearings and distances to PLSS corners used for proportioning).
- Restored/recovered/reestablished in a location that differs from a previously established position. (Show difference in plan view below.)
- Check here if additional information is shown on the reverse side of this form.

Describe record evidence, recovered physical evidence, occupational evidence, testimonial evidence and all other evidence considered in the recovery/restoration of the corner.

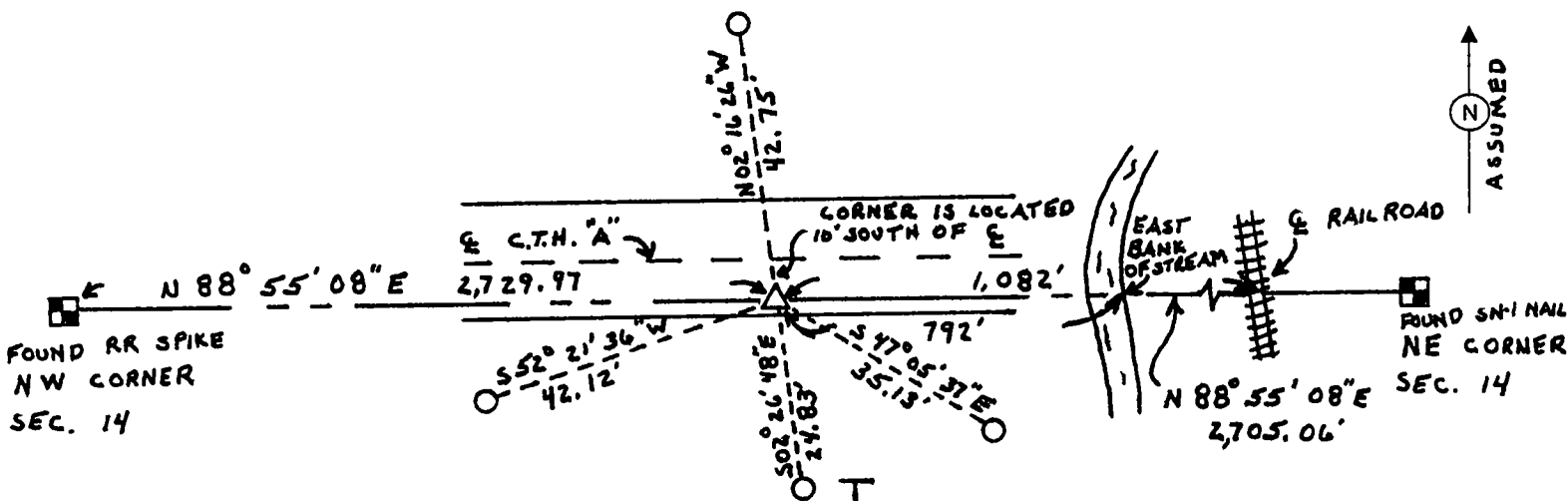
The original corner was established in 1885 by James Nowhir. Original bearing trees were: Hemlock 12° N76W 25 links, Hemlock 12° N30E 10 Links. In 2002, Jeffrey Inman found no evidence of the corner and no evidence of the bearing trees. There is a called distance from centerline of railroad tracks, given on the railroad right of way map, being 1,082 feet. This distance west of railroad tracks online with the northwest and northeast corners of section 14 fits the original called distance from stream given in the original notes. Set north quarter corner online with the northwest and northeast corners, 1,082 feet west of the centerline of railroad track intersection with the north line of section 14.

Physical description of the monument set:

Set a Bernsten SN-1 nail at location of North Quarter Corner of Section 14, T. 33 N., R. 13 E.

Describe the accessories used to perpetuate the location of the corner. Include a plan view drawing and indicate accessories found/set. Describe measuring point on bearing trees. Show any topographic features that would aid in future recovery of the corner.

- = 3/4" X 30" rebar set flush with ground for witness corner.
- △ = Set Bernsten SN-1 nail at location of N1/4 cor. Of Sec. 14.
- ⊥ = White vinyl sign post with "Survey Marker" sign set 0.5' east of witness

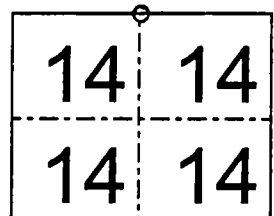
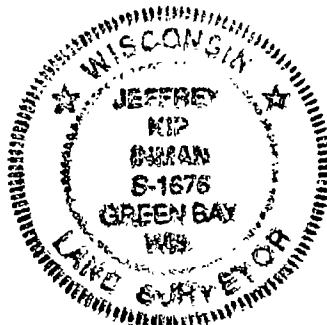


SURVEYORS SEAL

The North Quarter
corner of Section 14
T. 33 N., R. 13 E.
Langlade County, WI

I, Jeffrey K. Inman certify that the corner location shown on this record was determined by me or under my direction and control and that this U.S. Public Land Survey Monument Record is correct and complete to the best of my knowledge and belief.

Signature: [Handwritten Signature] Date: 6/7/2002



○ = Location of Corner

INDEX NO.

519