

U.S. PUBLIC LAND SURVEY MONUMENT RECORD

(Prepared and as required by S. A-E 7.08 WI Administrative Code)

The Northeast corner of Section 14, T. 33 N., R. 13 E., Langlade County, WI

43313110000

Corner was: (Check all that apply)

- Restored through acceptance of an obliterated evidence location.
- Restored through acceptance of a found perpetuated location.
- Determined to be lost and re-established through proportionate methods. (Show bearings and distances to PLSS corners used for proportioning).
- Restored/recovered/reestablished in a location that differs from a previously established position. (Show difference in plan view below.)
- Check here if additional information is shown on the reverse side of this form.

Describe record evidence, recovered physical evidence, occupational evidence, testimonial evidence and all other evidence considered in the recovery/restoration of the corner.

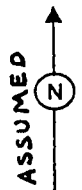
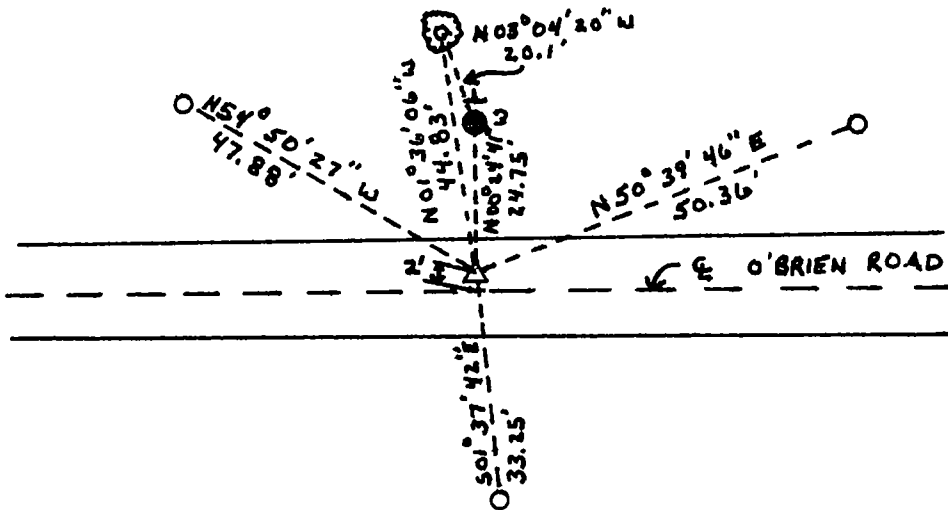
The original corner was established in 1865 by James Nowhr. In 1988, Robert Poss reset corner from information by Owen-Illinois Co., and found witness post, found no other evidence. Poss set brass cap in concrete marked "Wit. Cor. 1 1/2 RDS. So. TO COR.", bearing trees: aspen N00-70-15W, 14.0', aspen 8° N26-30W, 12.5', balsam 6° N10-45W 20.3', aspen 4° N78-45E 14.2', all bearing trees tied off brass cap witness corner. In 2002, Jeffrey Inman Recovered brass cap set in concrete labeled witness corner set by poss and 14" balsam bearing tree located N3-04-20W, 20.1' from found brass cap witness. Set corner S00-24-41E, 24.75' from found witness corner, 2' North of centerline of O'Brien Road. Measured distance from northwest corner to northeast corner of Section 14 ft William Kelly's recorded distance on Plat #30228, surveyed in 1985

Physical description of the monument set:

Set a Bernsten SN-1 nail at location of Northeast corner of Section 14, T.33N., R.13 E.

Describe the accessories used to perpetuate the location of the corner. Include a plan view drawing and indicate accessories found/set. Describe measuring point on bearing trees. Show any topographic features that would aid in future recovery of the corner.

- = 3/4" x 30" rebar set flush for witness corner
- = Found brass cap in conc. Labeled Wit. Cor.
- ⊙ = Found bearing tree 14" balsam
- ▲ = Set Bernsten SN-a nail at location of NE cor. Of Sec. 14
- ⊥ = White vinyl sign post with "Survey Marker" sign set 0.5' north of brass cap witness

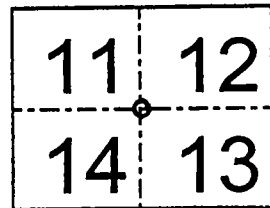
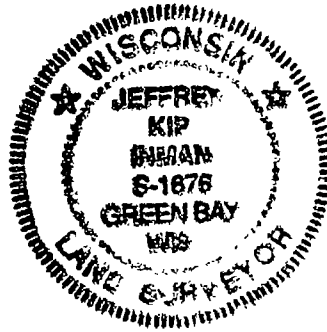


SURVEYORS SEAL

The Northeast corner of Section 14
T. 33 N., R. 13 E.
Langlade County, WI

I, JEFFREY K. INMAN certify that the corner location shown on this record was determined by me or under my direction and control and that this U.S. Public Land Survey Monument Record is correct and complete to the best of my knowledge and belief.

Signature [Handwritten Signature] Date 6/7/2002



○ = Location of Corner

INDEX NO. 521

CERTIFIED LAND CORNER RESTORATION

33-13

Index No. J-21

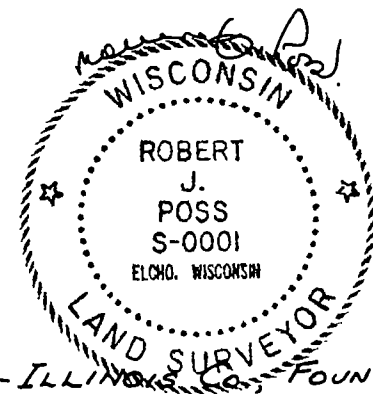
State of Wisconsin }
County of LANGLADE } ss.

I, ROBERT J. POSS, do hereby certify that on the 29TH day of JUNE, 1968, I found evidence of the SECTION corner of SEC. 11, 12, 13-14 Township 33, North, Range 13 EAST, Fourth, Principal Meridian, as described hereon; and that from this evidence I established a new monument and accessories as described hereon to perpetuate the original location of this corner.

Resident witnesses:

.....
.....
.....

History of original corner establishment:



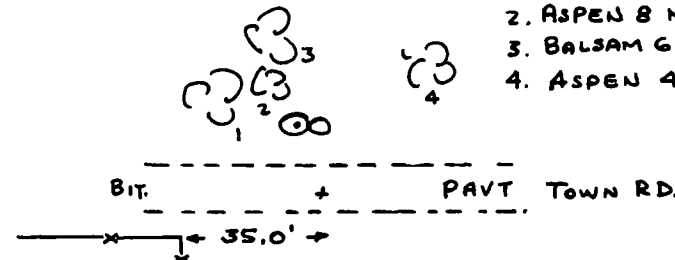
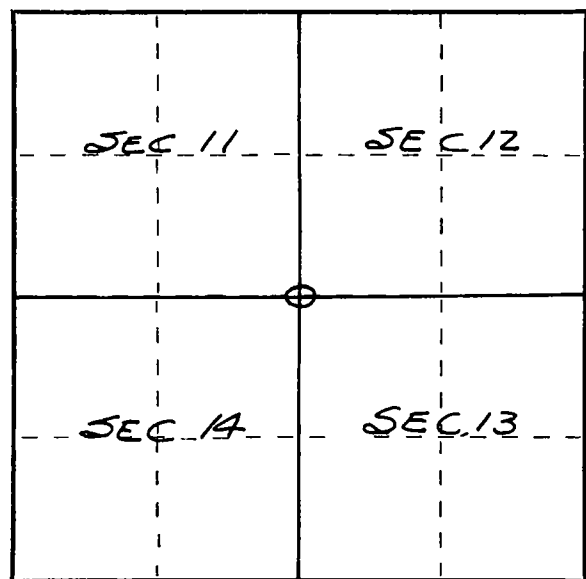
Description of corner evidence found:

FROM INFORMATION BY OWENS-ILLINOIS CO., FOUND WITNESS POST - NO TREES OR OTHER MARKS.

Description of monument and accessories I established to perpetuate the original location of this corner.

BLAZED TREES MARKED NBT.

- 1- BADLY SCARRED ASPEN N 70 1/4 W 14.0' ○ OLD WIT COR
- 2. ASPEN 8 N 26 1/2 W 12.5 FT 6" WHITE POST.
- 3. BALSAM 6 N 10 3/4 W 20.3 FT ○ BRASS CAP IN CONCRETE MARKED WIT. COR.
- 4. ASPEN 4 N 78 3/4 E 14.2 FT. ○ SEC 11 SEC 12 SEC 14 SEC 13 T 33N R 13E 1/2 RDS. So. To Cor. 19.68



Dated at ELCHO, Wis., this 29TH day of JUNE, 1968.

Signature Robert J. Poss Title REG. LAND SURVEYOR Registration No. S-1
(County Surveyor, Registered Land Surveyor, or other duly authorized official)

Office of Register of Deeds, County of....., I hereby certify that the within instrument was filed in this office for record on the..... day of....., 19..... at..... o'clock..... M.

.....
(Register of Deeds)

By..... Deputy

○ = Corner monument restored.