

LANGLADE COUNTY U.S. PUBLIC LAND CORNER RESTORATION

The quarter corner common to Sections 10 & 11, T. 33 N., R. 13 E., Langlade County, WI.

4331310 2000 2011

Corner was: (check all that apply)

- Restored through acceptance of an obliterated evidence location.
- Restored through acceptance of a found perpetuated location.
- Determined to be lost and re-established through proportionate methods.
- Show bearings and distances to PLSS corners used for proportioning, and show original distances).
- Restored/recovered/re-established in a location that differs from a previously established position.
- (Show difference in plan view below).
- Check here if additional information is shown on the reverse side of this form.

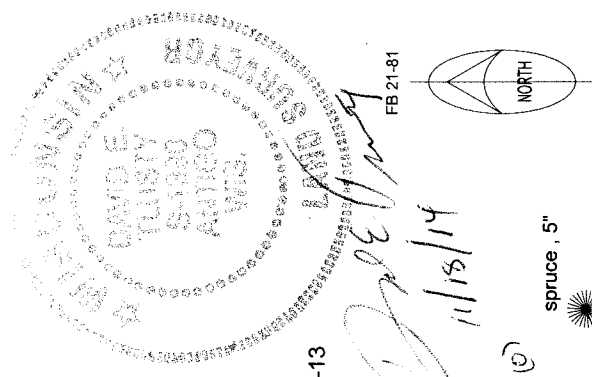
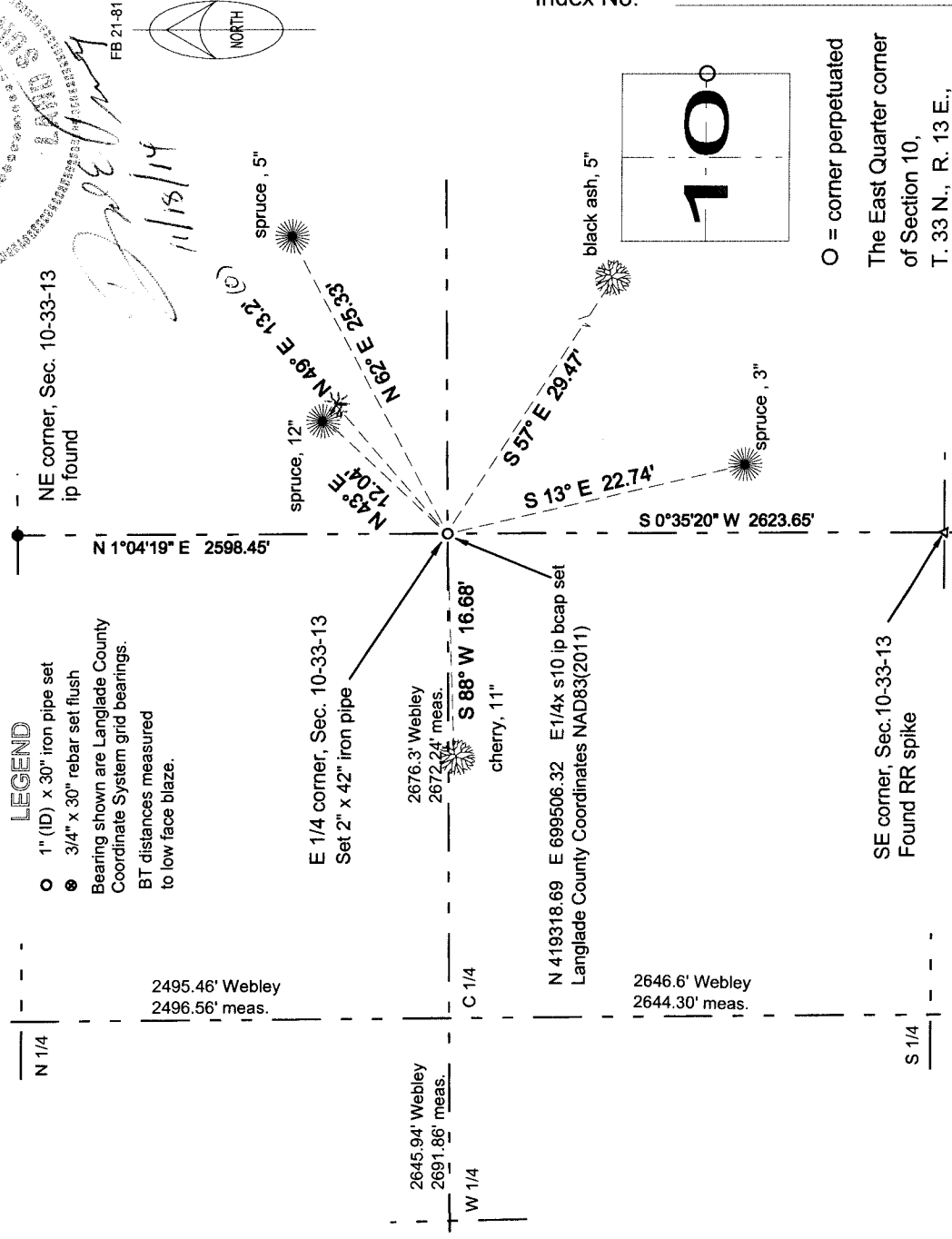
Describe record evidence, recovered physical evidence, occupational evidence, testimonial evidence and all other evidence considered in the recovery/restoration of the corner.

The original corner was established in 1864 by James Nowlin. Original bearing trees: tamarack, 15", N49°E, 20 links and a tamarack, 20" S10°W, 25 links. In 1915, Webley, in FB 101-19, ran "E from West 1/4 cor.. 80.64 2.26 chains N of E 1/4 Orig stump of BT standing. Set center 40.55 from E 1/4 cor." 2010, D. Tlusty. I tied into corners to the North, South and West of here to come up with a search area based on Webleys information. I found a 15" tamarack stump to the NE as per original notes and also a rotted stump for the other OBT. As the distance from this point works good with Webleys distance to the N-S 1/4 line and the distances from here to the section corners both north and south are within reason, I accept these stumps as the best remaining evidence to re-establish the original corner location. I also measured approximately 2 chains south from here to high ground as per the original notes.

Physical description of the monument set:

To mark the corner, I set a 2" x 42" iron pipe, top of which is flush with the ground. Corner is in black spruce & ash swamp.

Describe the accessories used to perpetuate the corner. Include a plan view drawing and accessories found/set. Describe measuring point on bearing trees. Show any topographic features that would aid in future recovery of the corner.



Index No. G17 33-13

○ = corner perpetuated
The East Quarter corner of Section 10, T. 33 N., R. 13 E., Langlade County, WI

I, David E. Tlusty, Professional Land Surveyor, as Langlade County Surveyor, certify that the corner location on this record was determined by me and that this U.S. Public Land Survey Monument Record is correct to the best of my knowledge and belief.