

CERTIFIED LAND CORNER RESTORATION

33-B

Index No. F-4

State of Wisconsin }  
County of LANGLADE } ss.

History of original corner establishment:

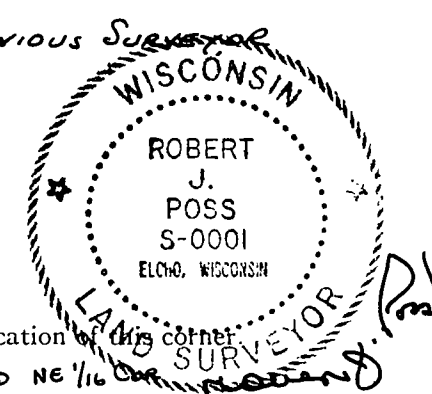
I, ROBERT J. POSS, do hereby certify that on the 10TH day of AUGUST, 1968, I found evidence of the NE 1/4 corner of SEC. 7, Township 33 NORTH, North, Range 13 EAST, Fourth, Principal Meridian, as described hereon; and that from this evidence I established a new monument and accessories as described hereon to perpetuate the original location of this corner.

Description of corner evidence found:

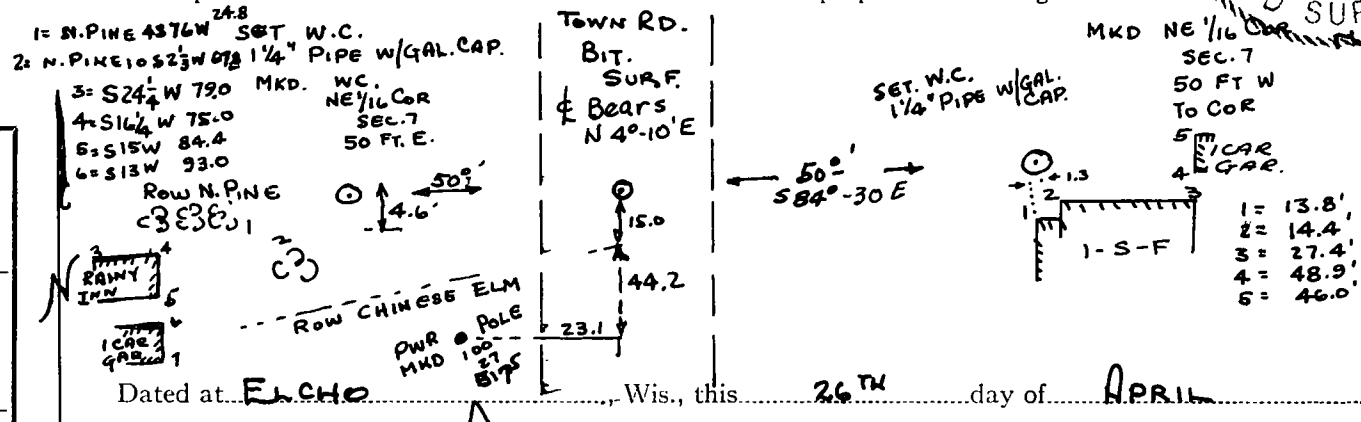
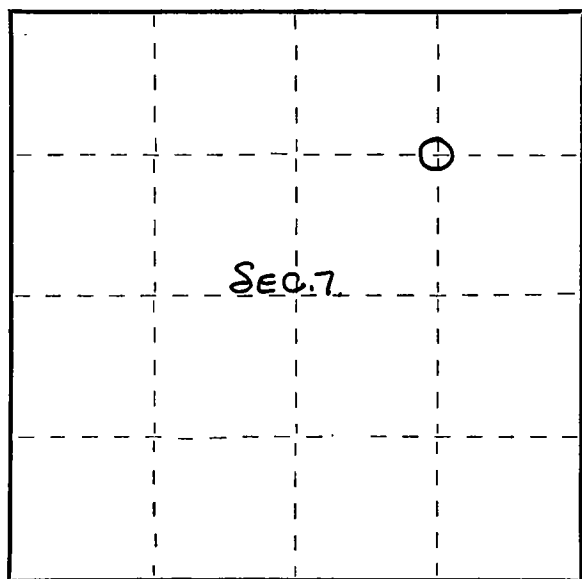
IRON PIPE IMBEDDED IN BLACK TOP BY PREVIOUS SURVEYOR

Resident witnesses:

NORMAN BRAUN (T. CHR.)



Description of monument and accessories I established to perpetuate the original location of this corner:



Dated at ELCHO, Wis., this 26TH day of APRIL, 1969.

Signature Robert J. Poss Title REG. LAND SURVEYOR Registration No. S-1  
(County Surveyor, Registered Land Surveyor, or other duly authorized official)

Office of Register of Deeds, County of \_\_\_\_\_, I hereby certify that the within instrument was filed in this office for record on the \_\_\_\_\_ day of \_\_\_\_\_, 19\_\_\_\_ at \_\_\_\_\_ o'clock \_\_\_\_\_ M.

(Register of Deeds)

By \_\_\_\_\_ Deputy

FORM 985 H. C. MILLER CO., MILWAUKEE

○ = Corner monument restored.