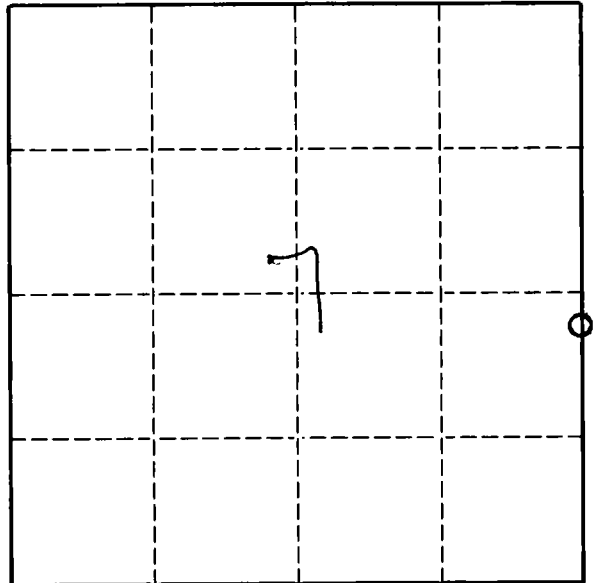


# U. S. PUBLIC LAND SURVEY MONUMENT RECORD

**INSTRUCTIONS:**

This record shall show the location of the corner and shall include all of the following nine elements (a through i).

- (a) Identify the corner by reference to the U.S. public land survey system.  
 O = Corner monument restored.
- M.C. 7 & 8  
 South side of lake  
 T33N, R13E



- (b) Describe any record evidence, monument evidence, occupational evidence, testimonial evidence or any other material evidence you considered, and whether the monument was found or placed.

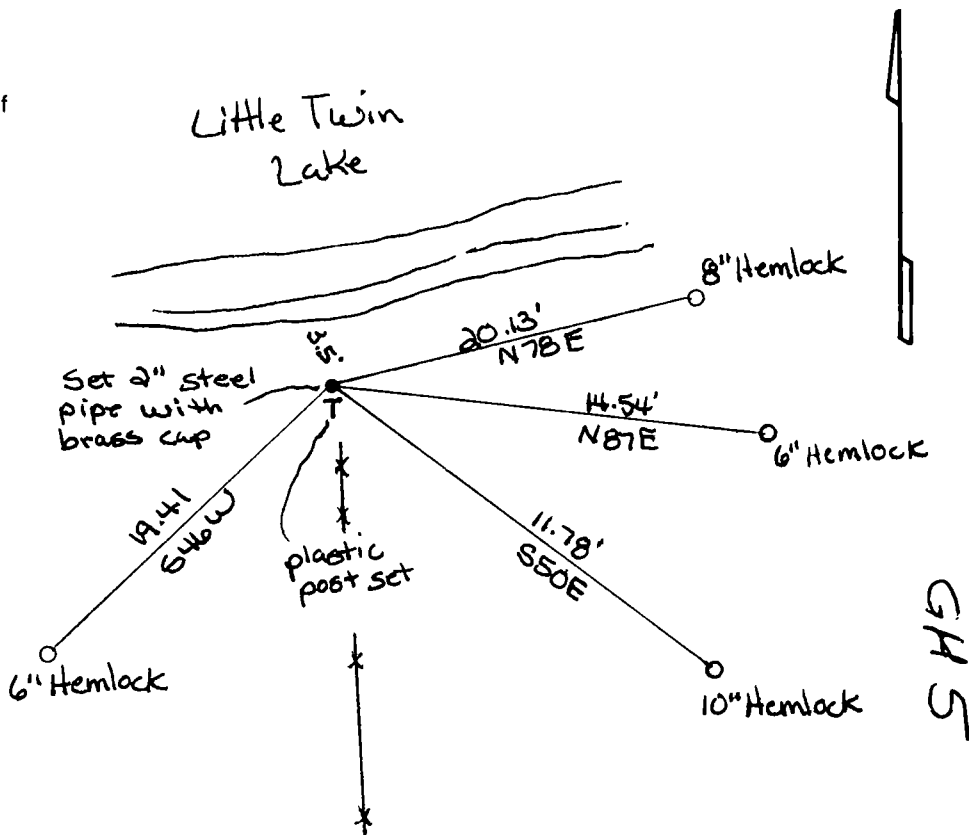
There was a very old and down fence line leading south from lake. Found what was believed to be stump of birch tree used by Hutchinson in 1915 but tie fit to out in the lake. I believe that the original M.C. was on the edge of the lake.

(more info. on back)

- (c) In the plan view drawing below, provide reference ties to at least 4 witness monuments, or, if the location is within a municipality, to at least 2 witness monuments. (Witness monuments shall be made of concrete, natural stone, iron or other equally durable material.) Describe witness monuments.

- (d) Show a plan view drawing depicting the relevant monuments and reference ties which is sufficient in detail to enable accurate relocation of the corner monument if the corner monument is disturbed. Indicate north.

All measurements made to nails in the side of trees.



Describe any material discrepancy between the location of the corner as restored or reestablished and the location of that corner as previously restored or reestablished by distance and direction. Show the discrepancy on the plan view drawing under (d), above. Show the distances between the corner as previously restored or reestablished and (1) the corner as restored or reestablished, and (2) to at least 2 of the witness monuments shown on the drawing in (d), above.

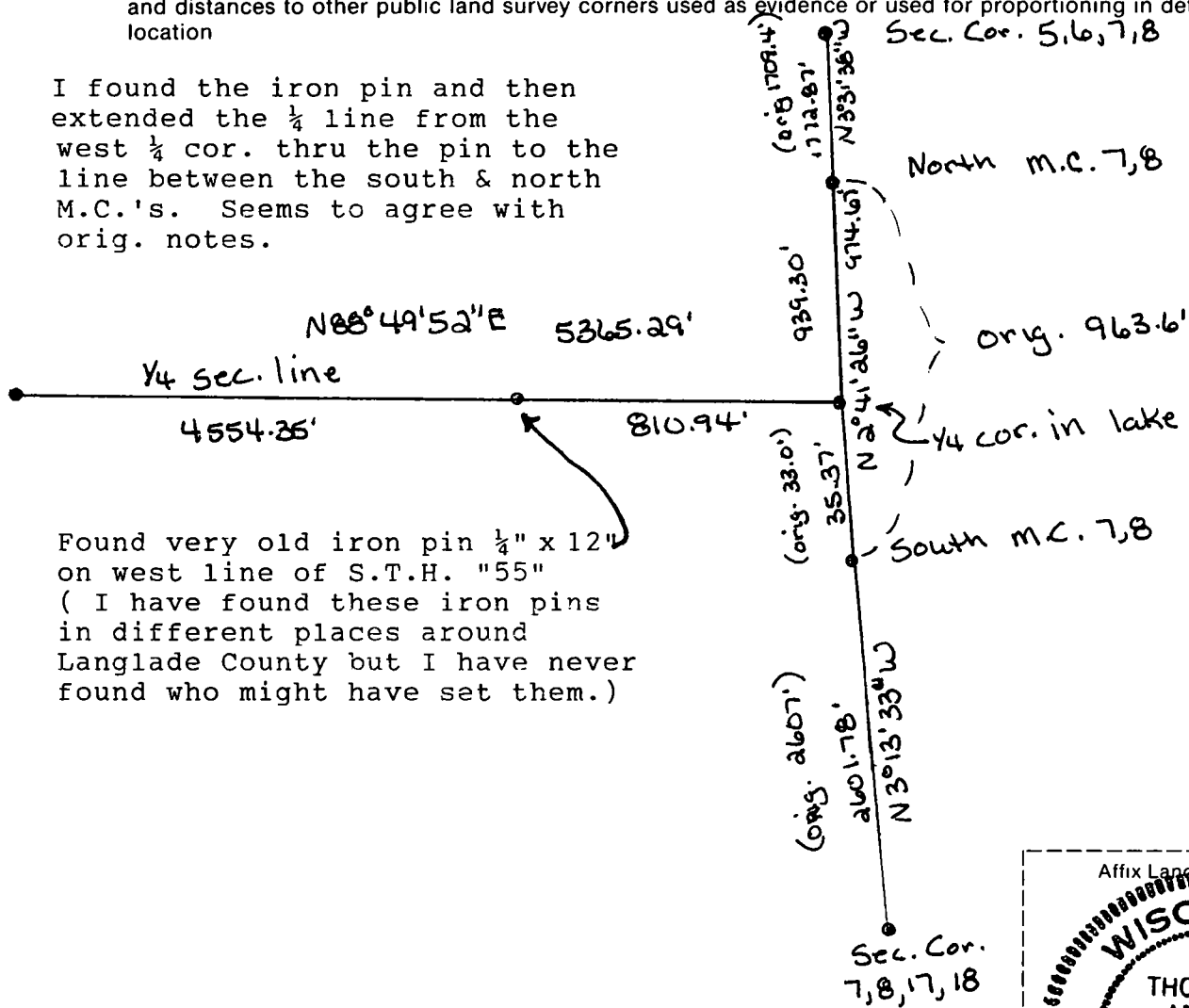
N/A

(f) Was the corner restored through acceptance of (1) an obliterated evidence location, or, (2) a found perpetuated location.?

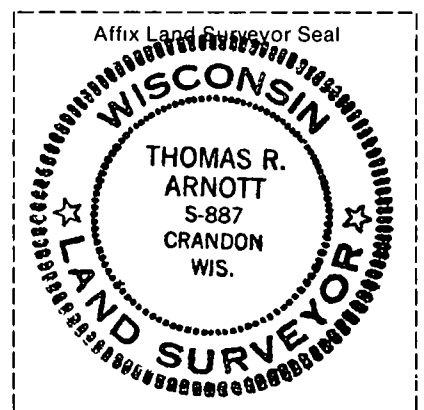
1

(g & h) Was the corner reestablished through lost corner proportionate methods? If so, show the method, including the directions and distances to other public land survey corners used as evidence or used for proportioning in determining the corner location

I found the iron pin and then extended the  $\frac{1}{4}$  line from the west  $\frac{1}{4}$  cor. thru the pin to the line between the south & north M.C.'s. Seems to agree with orig. notes.



Found very old iron pin  $\frac{1}{4}$ " x 12" on west line of S.T.H. "55" ( I have found these iron pins in different places around Langlade County but I have never found who might have set them.)



(i) I, Thomas R. Arnott S-887

(type or print name)

certify that the corner location shown on this record was determined by me or under my direction and control and that this U.S. Public Land Survey Monument Record is correct and complete to the best of my knowledge and belief.

*Thomas R. Arnott*  
Signature

*10 June 96*  
Date