

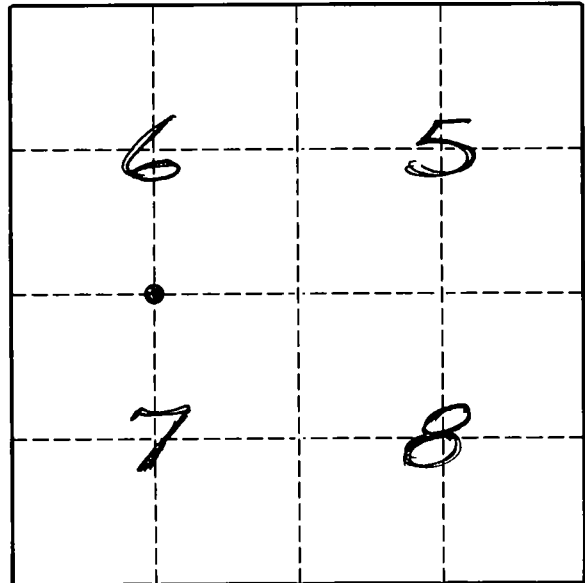
U. S. PUBLIC LAND SURVEY MONUMENT RECORD

INSTRUCTIONS:

This record shall show the location of the corner and shall include all of the following nine elements (a through i).

- (a) Identify the corner by reference to the U.S. public land survey system.
 ● = Corner monument restored.

The South Quarter corner of Section 6, Township 33 North, Range 13 East, Langlade County, Wisconsin.



T. 33 N., R. 13 E.

- (b) Describe any record evidence, monument evidence, occupational evidence, testimonial evidence or any other material evidence you considered, and whether the monument was found or placed.

The original corner was established in 1865 by James L. Nowlin. Original bearing trees: elm, 20", N48E, 27 lks., and a lind, 10", S06E, 10 lks. In 1917, Hutchinson used this corner (but didn't describe it) for setting the center and the center-south 1/16th corner of Section 6. In August of 1994, I measured south from the previously recovered center of section, along a very old fenceline, and found the center-south 1/16th corner stone as set and described by Hutchinson. I extended this line to the south to search for this quarter corner. For the quarter corner, I found a 12" dia. rounded top stone with "x" chiseled on top, which is approximately 1' below ground. Although I have no knowledge or record of who set this corner, from other corners recovered in the area, I believe that Brooks set this stone, some time before Hutchinson used it in 1917. I accept the stone found as the best evidence of the original corner location and perpetuate said location as shown below.

- (c) In the plan view drawing below, provide reference ties to at least 4 witness monuments, or, if the location is within a municipality, to at least 2 witness monuments. (Witness monuments shall be made of concrete, natural stone, iron or other equally durable material.)

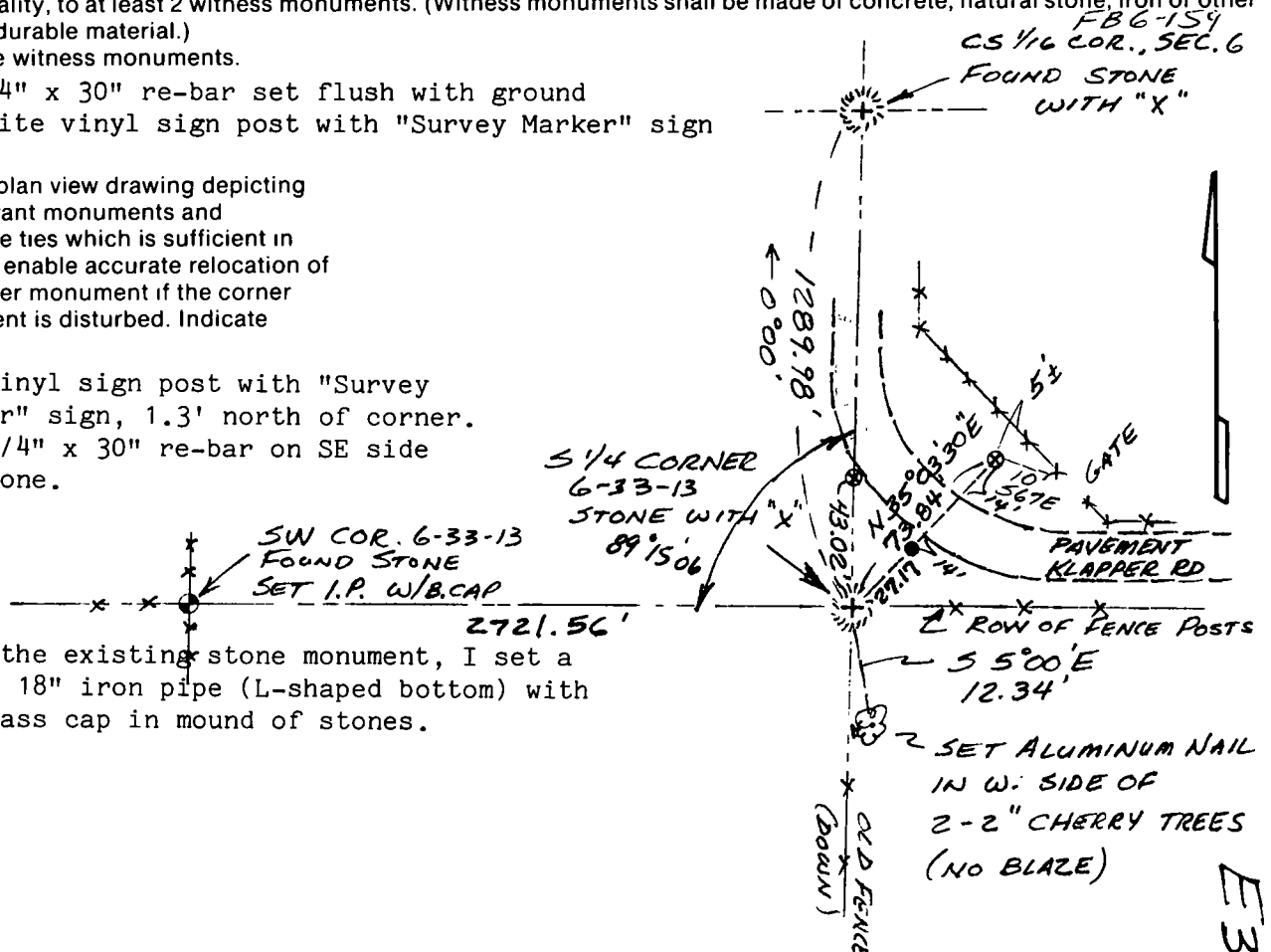
Describe witness monuments.

- ⊗ = 3/4" x 30" re-bar set flush with ground
- ⊥ = white vinyl sign post with "Survey Marker" sign

- (d) Show a plan view drawing depicting the relevant monuments and reference ties which is sufficient in detail to enable accurate relocation of the corner monument if the corner monument is disturbed. Indicate north.

Set vinyl sign post with "Survey Marker" sign, 1.3' north of corner.
 Set 3/4" x 30" re-bar on SE side of stone.

Over the existing stone monument, I set a 1 1/4" x 18" iron pipe (L-shaped bottom) with 4" brass cap in mound of stones.



E3

Describe any material discrepancy between the location of the corner as restored or reestablished and the location of that corner as previously restored or reestablished by distance and direction. Show the discrepancy on the plan view drawing under (d), above. Show the distances between the corner as previously restored or reestablished and (1) the corner as restored or reestablished, and (2) to at least 2 of the witness monuments shown on the drawing in (d), above

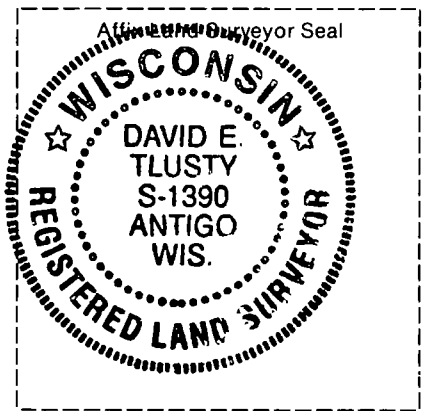
This corner was required for other surveys in Section 7, including "Chip n Dale" Condominiums"by former surveyor Kelly and a previous survey of the N-S quarter line by Gary Radtke, but no corner form was completed by either of these surveyors, and no definite monument was apparently set by either surveyor, therefore the discrepancy between this corner recovered and the corner(s) used by those surveyors cannot be shown unless extensive survey work to re-construct the corner is completed.

(f) Was the corner restored through acceptance of (1) an obliterated evidence location, or, (2) a found perpetuated location?
A found perpetuated location.

(g & h) Was the corner reestablished through lost corner proportionate methods? If so, show the method, including the directions and distances to other public land survey corners used as evidence or used for proportioning in determining the corner location.
No.

(i) I, David E. Tlusty, Langlade County Surveyor
(type or print name)

certify that the corner location shown on this record was determined by me or under my direction and control and that this U.S. Public Land Survey Monument Record is correct and complete to the best of my knowledge and belief.



David E. Tlusty Sept 7, 1994
Signature Date