

2021
4331304 2000
~~2021~~

U.S. PUBLIC LAND SURVEY MONUMENT RECORD

(Prepared and as required by S. A-E 7.08 WI Administrative Code)

The EAST 1/4 corner of Section 4, T. 33 N., R. 13 E., Langlade County, WI
 Corner was (check all that apply)

- Restored through acceptance of an obliterated evidence location.
- Restored through acceptance of a found perpetuated location.
- Determined to be lost and re-established through proportionate methods. (show bearings and distances to PLSS corners used for proportioning.)
- Restored/recovered/re-established in a location that differs from a previously established position. (Show difference in plan view below.)
- Check here if additional information is shown on the reverse side of this form.

Describe record evidence, recovered physical evidence, occupational evidence, testimonial evidence, and all other evidence considered in the recovery/restoration of the corner.

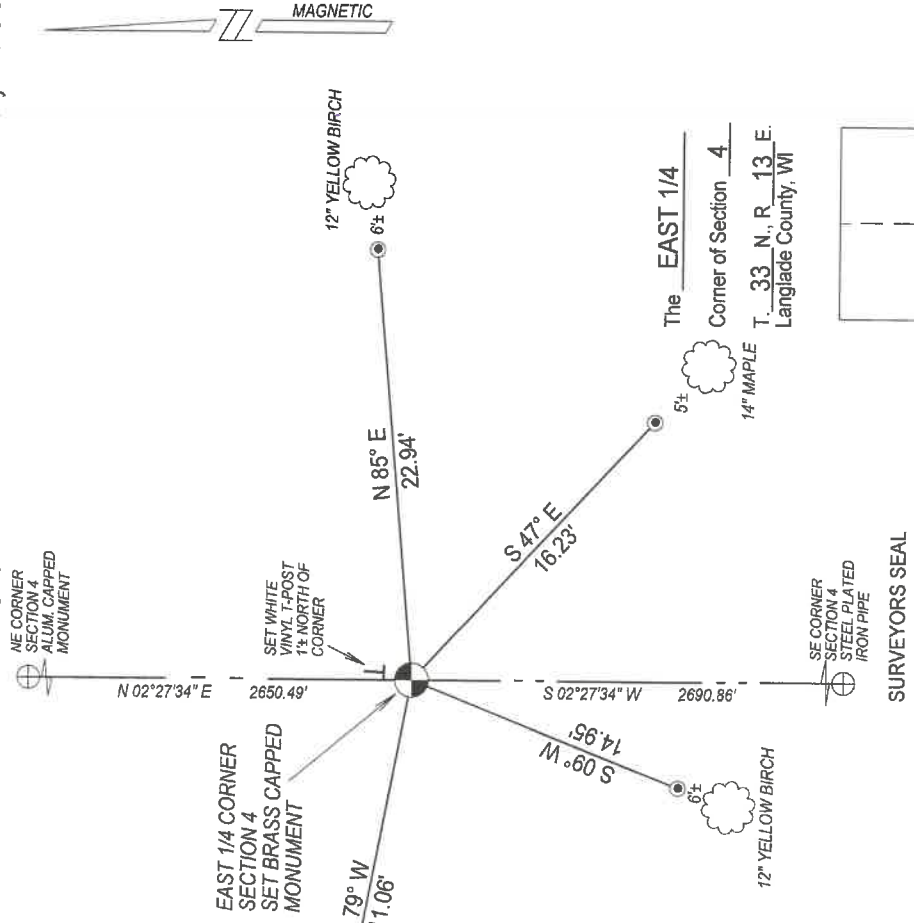
1865- J.L. Nowlin set corner in original survey and set the following BTS:
 10" Hemlock N71°W, 8 links; 10" Hemlock, S72°E, 10 links.

2021 - Surveying in Section 4, I found no evidence of the corner or its original bearing trees. I set the corner at the prorated distance between the NE and SE Section Corners.

Physical description of the monument set:

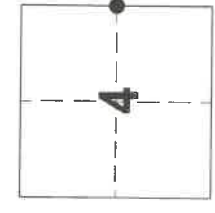
I set a 2.375" X 30" iron pipe with 3.25" brass cap as the corner, a white vinyl post 1± North, and four ties as shown below.

Describe the accessories used to perpetuate the location of the corner. Include a plan view drawing and indicate accessories found/set. Describe measuring point on bearing trees. Show any topographic features that would aid in future recovery of the corner.



Notes:
 -Not drawn to scale.
 -Bearings referenced to magnetic.
 -Set 3/4" o.d. x 30" long rebar at tie locations.
 -Bearing tree plaquards nailed chest high.

The EAST 1/4
 Corner of Section 4
 T. 33 N., R. 13 E.
 Langlade County, WI



● = Location of corner



I, Michael J. Hoffman, certify that the corner location shown on this record was determined by me or under my direction and control and that this U.S. Public Land Survey Monument Record is correct and complete to the best of my knowledge and belief.

Michael J. Hoffman
 Signature
 04/24/2021
 Date