

State of Wisconsin }
County of LANGLADE } ss.

History of original corner establishment:

I William F. Kelly, do hereby certify that on the 21ST day of MAY, 1979, I found evidence of the w 1/8 corner of E-W 1/4 Line Sect 2 Township 33, North, Range 13E, Fourth Principal Meridian, as described hereon; and that from this evidence I established a new monument and accessories as described hereon to perpetuate the original location of this corner.

Description of corner evidence found:

CORNER ESTABLISHED FROM SECT. SUBDIVISION OF SECT 2

SET 1 1/2" x 42" I.P. WITH I.P.

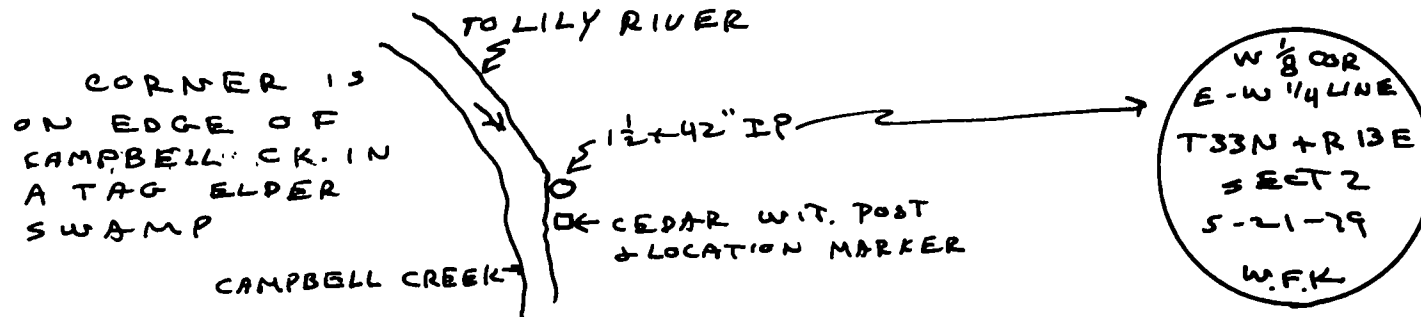
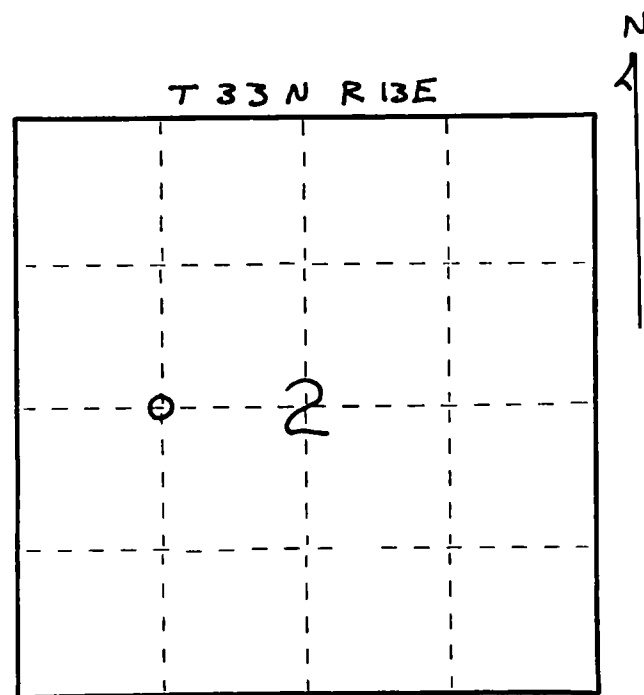


W.F. Kelly

Resident witnesses:

.....
.....
.....

Description of monument and accessories I established to perpetuate the original location of this corner.



Dated at ELCHO, Wis., this 21ST day of MAY, 1979

Signature William F. Kelly Title County Surveyor Registration No. S-1098
(County Surveyor, Registered Land Surveyor, or other duly authorized official)

Office of Register of Deeds, County of, I hereby certify that the within instrument was filed in this office for record on the day of, 19..... at o'clock M.

(Register of Deeds)

By Deputy

O = Corner monument restored.

FORM 885