

4 331302 2020 2012

# U.S. PUBLIC LAND SURVEY MONUMENT RECORD

(AS REQUIRED BY S. A-E 7.08, WI ADM. CODE)

HISTORY OF ORIGINAL CORNER ESTABLISHMENT AND SUBSEQUENT RESTORATIONS AND DESCRIPTION OF ANY RECORD, MONUMENT, OCCUPATIONAL, TESTIMONIAL, OR OTHER EVIDENCE CONSIDERED:

CORNER WAS NOT SET IN PART OF THE ORIGINAL GLO SURVEY

1979 - WILLIAM F. KELLY, SURVEYOR, R.L.S. #1098, SET A 2" BRASS CAP FOR THE CORNER FROM SUBDIVISION OF SECT 2 T33N R13E. CORNER LOCATED AT THE INTERSECTION OF THE E-W AND N-S 1/4 LINES.

CORNER WAS: (CHECK ALL THAT APPLY)

- RESTORED THROUGH ACCEPTANCE OF AN OBLITERATED LOCATION
  - RESTORED THROUGH ACCEPTANCE OF A FOUND PERPETUATED LOCATION
  - CONSIDERED A LOST CORNER AND REESTABLISHED THROUGH LOST CORNER PROPORTIONATE METHODS (INCLUDING A PLAN VIEW DRAWING SHOWING DISTANCES AND DIRECTIONS TO OTHER PUBLIC LAND SURVEY CORNERS USED FOR PROPORTIONING AND DETERMINING THE CORNER LOCATION)
  - RESTORED OR REESTABLISHED IN A LOCATION THAT DIFFERS FROM A PREVIOUS RESTORATION OF REESTABLISHMENT (INCLUDE A PLAN VIEW DRAWING AND INDICATE WHAT WAS SET AND/OR FOUND)
- DESCRIBE THE MONUMENT AND ACCESSORIES USED TO PERPETUATE THE LOCATION OF THIS CORNER. (INCLUDE A PLAN VIEW DRAWING AND INDICATE WHAT WAS SET AND/OR FOUND)

FOUND 3" STAMPED BRASS CAP AS CALLED FOR IN KELLY'S 1979 CERTIFIED LAND CORNER RESTORATION FORM. AND FOUND A 1" IRON PIPE

DID NOT ACCEPT KELLY'S CORNER POSITION. I DID HOWEVER ACCEPT THE FOUND 1" IRON PIPE. THE 1" PIPE FIT WELL WITH THE SECTION BREAKDOWN UTILIZING DAVID TLUSTY'S EAST ONE-QUARTER CORNER HE FOUND.

IN TALKING WITH DAVID TLUSTY R.L.S. #1390, THE CURRENT LANGLADE COUNTY SURVEYOR, HE INFORMED ME THAT THE SURVEY PERFORMED BY WILLIAM KELLY, R.L.S. #1098, SURVEY OF THE N1/2 OF SECTION 2 T33N, R13E, DONE IN 1979 AND RECORD # 30224, FILED ON 6/3/1993, KELLY SET A RAILROAD SPIKE FOR THE EAST ONE-QUARTER CORNER OF SECTION 2, AND THE SOUTHEAST CORNER OF SECTION 2. IN 2009 DAVID TLUSTY FOUND THE PERPETUATED ORIGINAL G.L.O. CORNER AND ACCEPTED IT AS THE TRUE AND CORRECT EAST ONE-QUARTER CORNER. HE SHOWED THIS ON HIS LAND CORNER RESTORATION AS INDEXED IN THE SURVEYORS OFFICE AS INDEX NO. C-21 33-13 DATED 8/4/2009. HE ALSO FOUND IN 2010, THE ORIGINAL PERPETUATED G.L.O. CORNER FOR THE SOUTHEAST CORNER OF SECTION 2 AND ACCEPTED IT AS THE TRUE AND ACCURATE SOUTHEAST CORNER. HE SHOWED THIS ON HIS LAND CORNER RESTORATION FORM AS INDEXED IN THE COUNTY SURVEYORS OFFICE AS INDEX NO. E21 33-13 DATED 2/10/2010. THE FOUND EVIDENCE AND RE-ESTABLISHMENT OF THE G.L.O. CORNER POSITION WOULD INVALIDATE THE WORK AND MONUMENTS SET BY KELLY IN HIS 1979 SURVEY AND SUBSEQUENT CORNER REPORTS.

SET THE FOLLOWING WITNESSES:

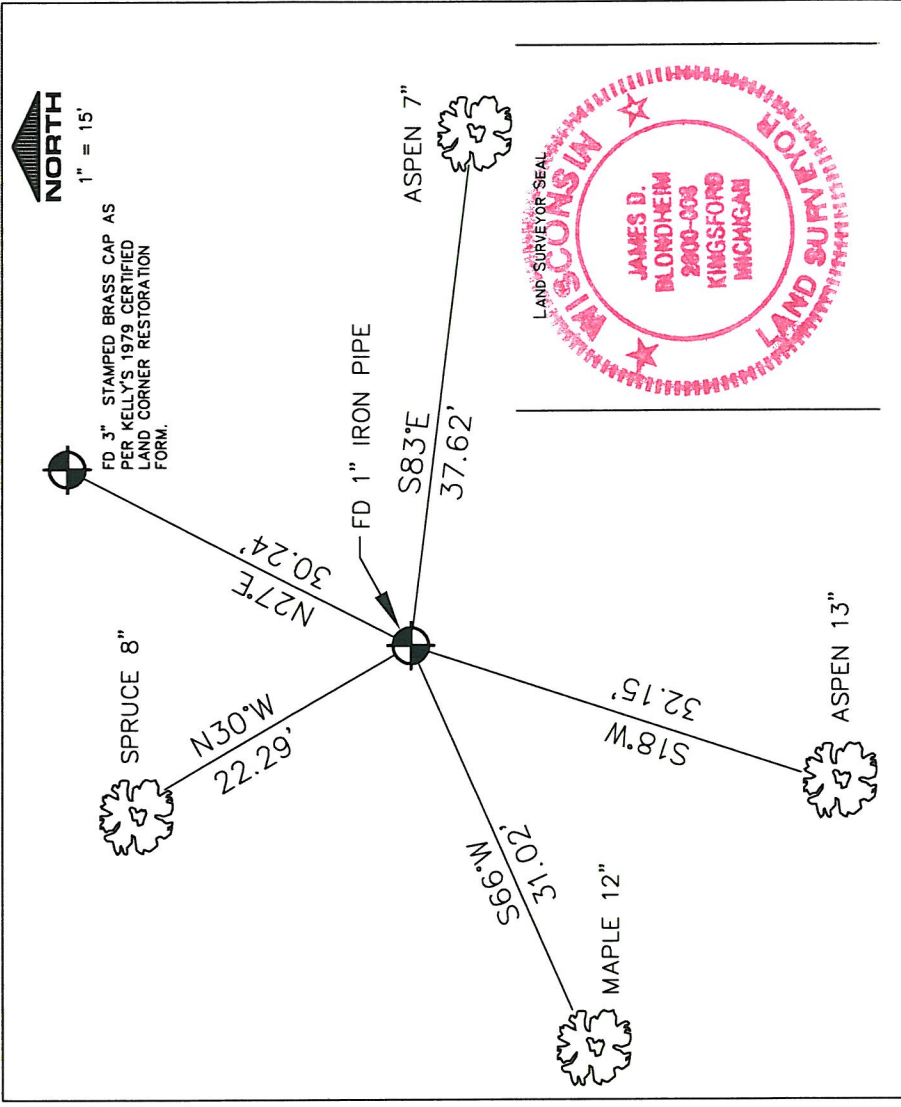
2" MONUMENT (AS SET BY KELLY, 1979)	N27°E	30.24' (FEET)
MAPLE 12"	S66°W	31.02' (FEET)
ASPEN 13"	S18°W	32.15' (FEET)
ASPEN 7"	S83°E	37.62' (FEET)
SPRUCE 8"	N30°W	22.29' (FEET)

NOTE: ALL TREES HAVE NEW CHEST & STUMP BLAZES.

THE CENTER  
CORNER OF SECTION 2,  
T. 33 N., R. 13 E.,  
FOURTH PRINCIPAL MERIDIAN,  
LANGLADE COUNTY, WISCONSIN

		● 2	

● = LOCATION OF CORNER



I, JAMES D. BLONDHEIM R.L.S. S-2800-008  
(TYPE OR PRINT NAME/CERTIFY THAT THE CORNER LOCATION SHOWN ON THIS ABOVE RECORD WAS DETERMINED BY ME OR UNDER MY DIRECTION AND CONTROL AND THAT THIS U.S. PUBLIC LAND SURVEY MONUMENT RECORD IS CORRECT AND COMPLETE TO THE BEST OF MY KNOWLEDGE AND BELIEF.)

SIGNATURE DATE 8/21/2012

INDEX NO. C-19

RECORD # C19-33-13  
LANGLADE COUNTY SURVEYORS OFFICE  
DATE FILED 8/29/12 BY: D. Trusty