

LANGLADE COUNTY U.S. PUBLIC LAND CORNER RESTORATION

The East 1/4 corner of Section 2, T. 33 N., R. 13 E., Langlade County, WI.

Corner was: (check all that apply)

- Restored through acceptance of an obliterated evidence location.
- Restored through acceptance of a found perpetuated location.
- Determined to be lost and re-established through proportionate methods.
- Show bearings and distances to PLSS corners used for proportioning, and show original distances).
- Restored/recovered/re-established in a location that differs from a previously established position.
- (Show difference in plan view below).
- Check here if additional information is shown on the reverse side of this form.

4331302.2000

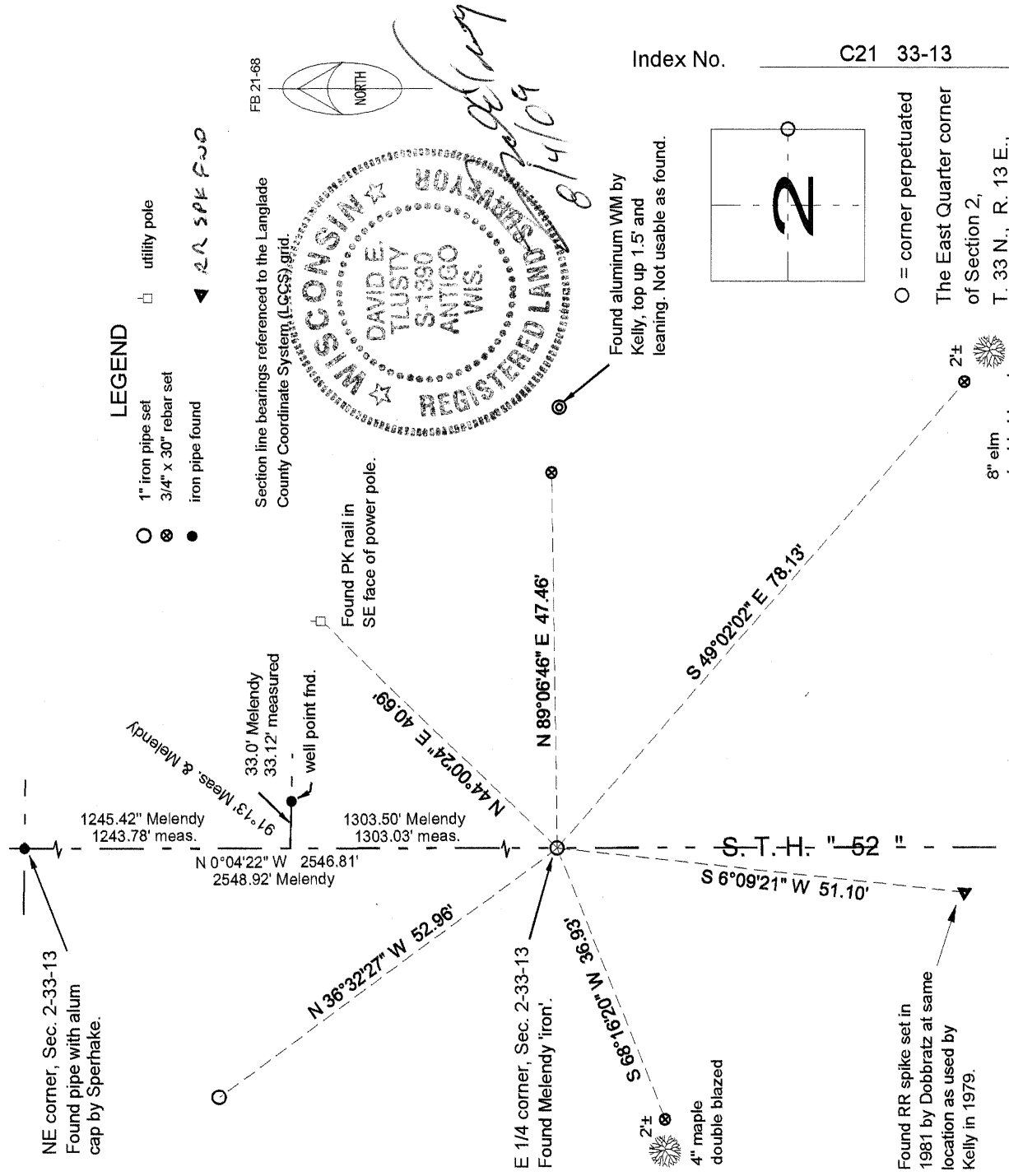
Describe record evidence, recovered physical evidence, occupational evidence, testimonial evidence and all other evidence considered in the recovery/restoration of the corner.

(See corner history on reverse side)

Physical description of the monument set:

Set a 1" x 30" iron pipe in place of the angle iron found. Top of pipe is 0.8' below road surface. Reset the angle iron found at the west edge of the pipe set.

Describe the accessories used to perpetuate the corner. Include a plan view drawing and accessories found/set. Describe measuring point on bearing trees. Show any topographic features that would aid in future recovery of the corner.



I, David E. Tlusty, Registered Land Surveyor, as Langlade County Surveyor, certify that the corner location on this record was determined by me and that this U.S. Public Land Survey Monument Record is correct to the best of my knowledge and belief.

LANGLADE COUNTY
U.S. PUBLIC LAND CORNER RESTORATION

History
of the Quarter corner common to
Sections 1 & 2, T33N, R13E.

In 1859, U.S. Deputy Surveyor J. L. Nowlin surveyed the interior township lines and ran South corrected between Sections 1 & 2 as follows:

Chains	Description
39.10	This corner
	Orig: BT's: elm, 14", S55°E, 7 links and an elm, 20", N20°W, 15 links
79.10	Section corner

In November, 1925, J.J. Melendy surveyed in Section 1 and described this corner as "Iron stake 6" below surface". He measured north from here 19.75 chains to the 1/16th corner, at which he made reference to a well point, 33 feet to the east (as shown on his survey map for M. J. Wallrich). He continued north to the section corner, another 18.87 chains to "post" at section corner.

In 1979, former surveyor Kelly (map #30224) set a railroad spike for this corner which he established by single proportionate measure between the NE corner and what he called the SE corner of Section 2.

In 1981, surveyor Wayne Dobbratz (map #40418) set a railroad spike for this corner which he established by single proportionate measure between the NE corner and what he called the SE corner of Section 2.

In 1990, former surveyor Kelly prepared a U.S. Public Land Survey Monument record for this corner. At this time, he "found iron under surface of road. Set R/R spike over iron. Set 3" al. witness monument".

July 22, 2009. D. Tlusty, found RR spike as described on Kelly's tie sheet. Below the RR spike, down about 6", I found the top of a 1 1/2" x 1 1/2" x 19" angle iron, leaning slightly to the West. Measuring to the North indicates that this is the 'iron' described by Melendy. I accept it as the best evidence of the corner. I dug to find the base of said iron, tied it, removed it and replaced it with a 1" x 30" iron pipe, top of which is 0.8' below the road surface. I reset the angle iron that I found at the west edge of the pipe I set in place of it.

NOTE: As shown of the front side of this sheet, at 51.10 feet south of this location, I found a RR spike in the location shown and used by Dobbratz in 1981, being also the same location used by Kelly in 1979 for his work in the North Half of Section 2 (map # 30224). To clarify, Kelly used this southerly location in 1979 and then 11 years later, in 1990, he tied the correct corner, 51.10 feet to the north.

