

4331302 0020

U.S. PUBLIC LAND SURVEY MONUMENT RECORD

(Prepared and as required by S. A-E 7.08 WI Administrative Code)

The SOUTH 1/4 corner of Section 2, T. 33 N., R. 13 E., Langlade County, WI
Corner was (check all that apply)

- Restored through acceptance of an obliterated evidence location.
- Restored through acceptance of a found perpetuated location.
- Determined to be lost and re-established through proportionate methods. (show bearings and distances to PLSS corners used for proportioning.)
- Restored/recovered/re-established in a location that differs from a previously established position. (Show difference in plan view below.)
- Check here if additional information is shown on the reverse side of this form.

Describe record evidence, recovered physical evidence, occupational evidence, testimonial evidence, and all other evidence considered in the recovery/restoration of the corner.

1865- Government Surveyor J.L. Nowlin set corner in original survey. BTs: 30" Birch S17°E, 15 links; 20" Hemlock, N20°W, 19 links.

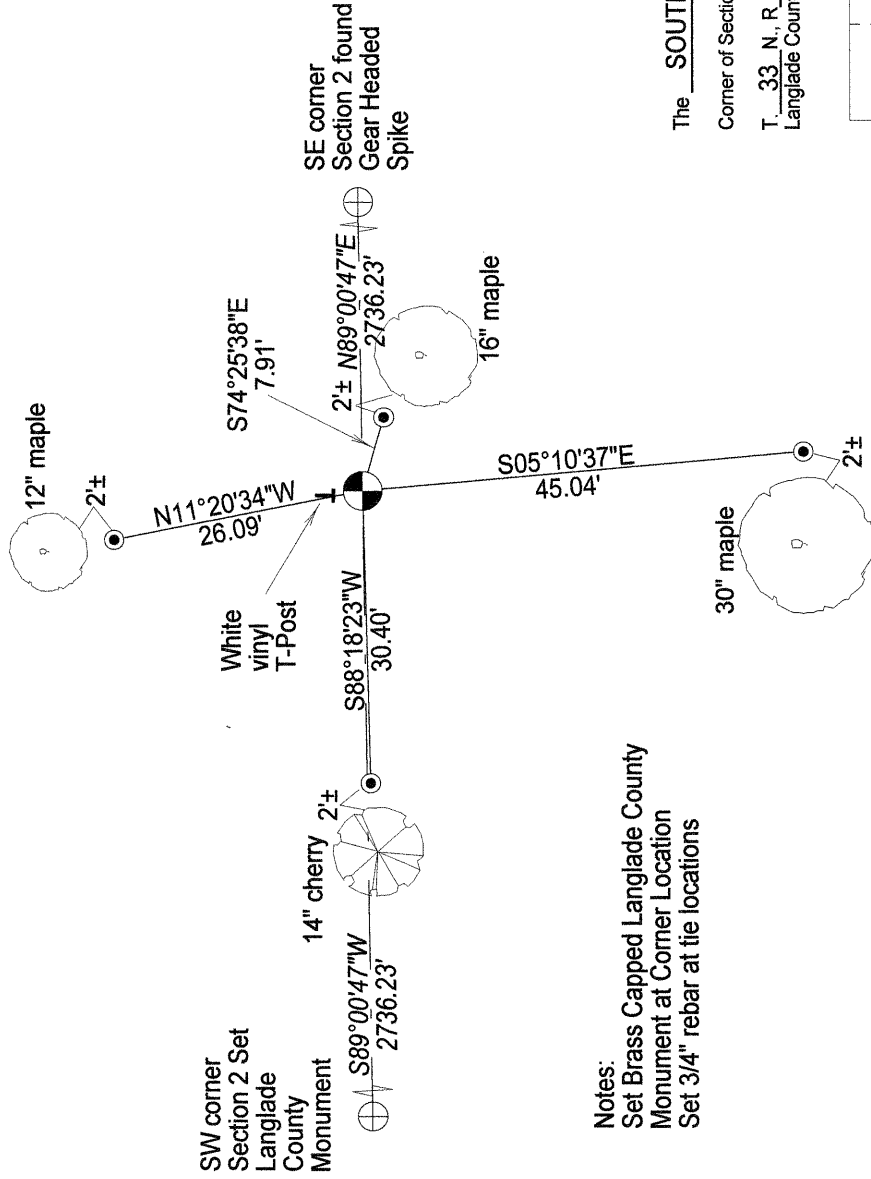
1979- Former Surveyor Kelly subdivided the North 1/2 of Section 2, but did not make any reference to the South 1/4 Corner.

2010- Despite an extensive search I did not find any evidence of the corner. I set corner at midpoint between the Southwest Corner which had been set by me, and Southeast Corner found in place.

Physical description of the monument set:

In 2010, I set a 2.375" X 30" iron pipe with 3.25" brass cap as the corner, a white vinyl post 2± North, and four new bearing trees as shown below.

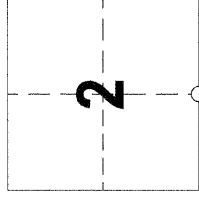
Describe the accessories used to perpetuate the location of the corner. Include a plan view drawing and indicate accessories found/set. Describe measuring point on bearing trees. Show any topographic features that would aid in future recovery of the corner.



BEARINGS REFERENCED TO THE LANGLADE COUNTY COORDINATE SYSTEM GRID.

Notes:
Set Brass Capped Langlade County Monument at Corner Location
Set 3/4" rebar at tie locations

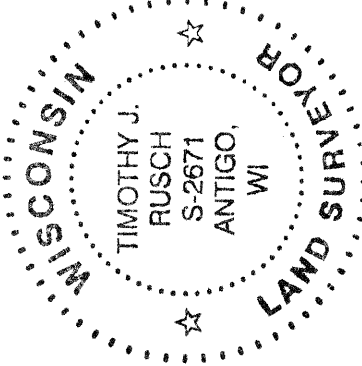
The SOUTH 1/4
Corner of Section 2
T. 33 N., R. 13 E.
Langlade County, WI



○ = Location of corner

INDEX No. **E 19** (33-13)

SURVEYORS SEAL



I, Timothy J. Rusch certify that the corner location shown on this record was determined by me or under my direction and control and that this U.S. Public Land Survey Monument Record is correct and complete to the best of my knowledge and belief.

Timothy J. Rusch 12-21-2010
Signature Date