

LANGLADE COUNTY U.S. PUBLIC LAND CORNER RESTORATION

The corner common to Sections 1, 2, 11 & 12, T. 33 N., R. 13 E., Langlade County, WI.

4331302 0000

Corner was: (check all that apply)

- Restored through acceptance of an obliterated evidence location.
- Restored through acceptance of a found perpetuated location.
- Determined to be lost and re-established through proportionate methods.
- Show bearings and distances to PLSS corners used for proportioning, and show original distances).
- Restored/recovered/re-established in a location that differs from a previously established position.
- (Show difference in plan view below).
- Check here if additional information is shown on the reverse side of this form.

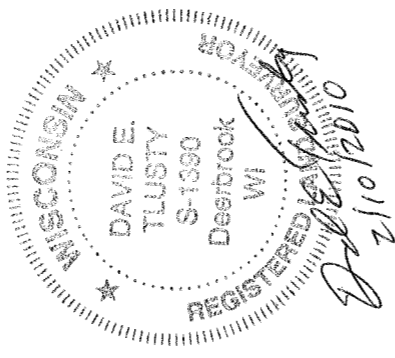
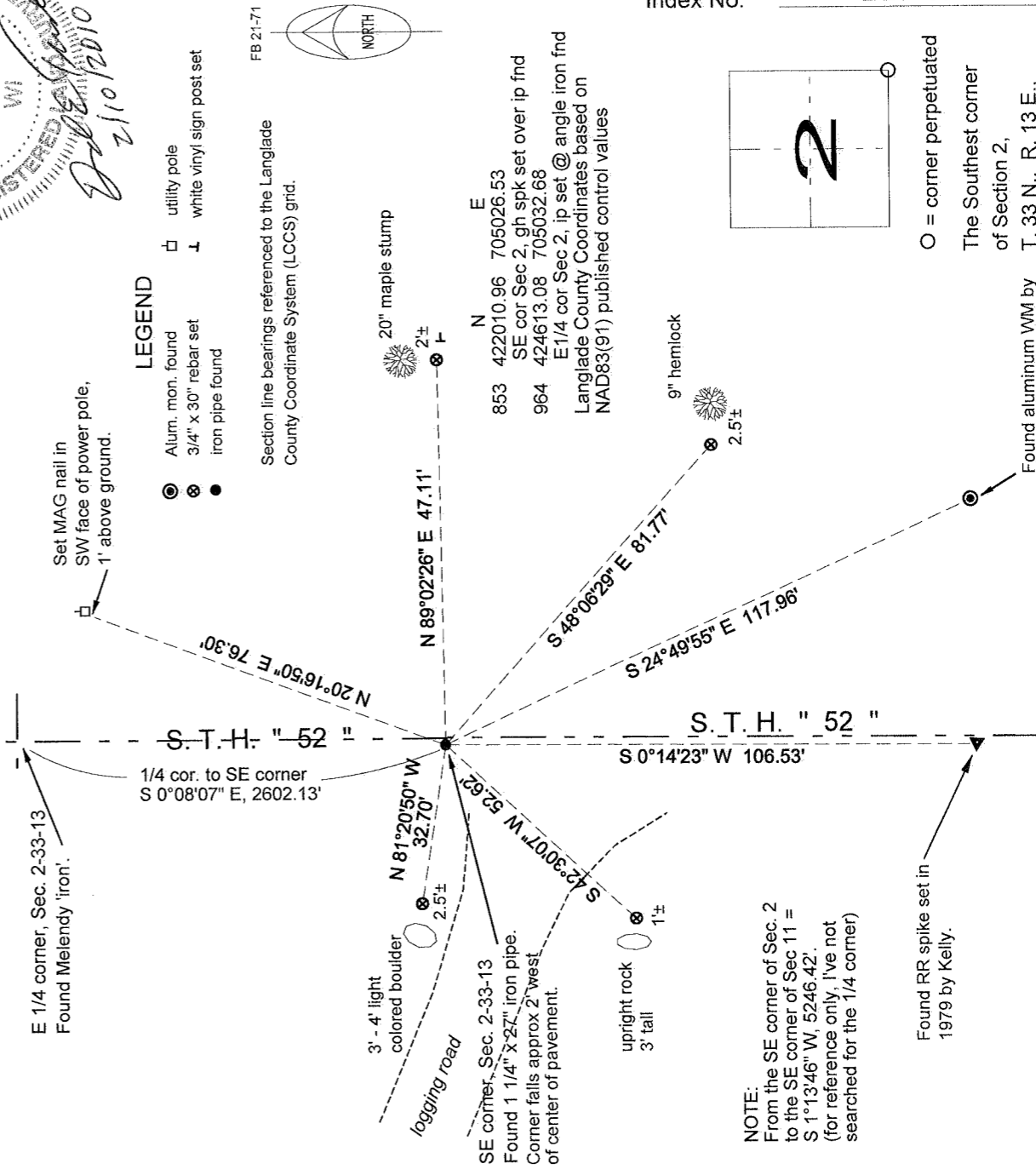
Describe record evidence, recovered physical evidence, occupational evidence, testimonial evidence and all other evidence considered in the recovery/restoration of the corner.

(See corner history on reverse side)

Physical description of the monument set:

Set a 1" x 30" iron pipe in place of the angle iron found. Top of pipe is 0.8' below road surface. Reset the angle iron found at the west edge of the pipe set.

Describe the accessories used to perpetuate the corner. Include a plan view drawing and accessories found/set. Describe measuring point on bearing trees. Show any topographic features that would aid in future recovery of the corner.



I, David E. Tlusty, Registered Land Surveyor, as Langlade County Surveyor, certify that the corner location on this record was determined by me and that this U.S. Public Land Survey Monument Record is correct to the best of my knowledge and belief.

LANGLADE COUNTY
U.S. PUBLIC LAND CORNER RESTORATION

History
of the corner common to
Sections 1, 2, 11 & 12, T33N, R13E.

In 1859, U.S. Deputy Surveyor J. L. Nowlin surveyed the interior township lines and ran North between Sections 11 & 12 as follows:

Chains	Description
40.00	Quarter corner to S11 & S12
80.00	This corner
	Orig. BT's: hemlock, 20", N07°E, 12 links and a sugar 7", N69°W, 18 links

An old undated railroad right of way map shows the distances along the east line of sections 11 and 2 as follows: starting from the south and going north, 2630 feet to quarter corner, 2616 feet to this corner, 2610 feet to quarter corner and 2544 feet to the NE corner of Section 2.

In November, 1925, J.J. Melendy surveyed in the NW quarter of Section 1. His notes and sketch show no distance to this corner from the quarter corner of Sec. 1 & 2, but he does show an "X" at this corner. Wayne Reuter, land surveyor at Nordin Surveying in Shawano is very familiar with Melendy's work and said that when Melendy shows those "X" marks on corners, he was there and found or set something at those corners.

A 1965 map (10398) by Owens-Illinois shows this corner as one "By others".

In 1979, former surveyor Kelly (map #30224) said: "RR spike in centerline of hwy, set and witnessed".

In 1981, Wayne Dohbratz (map 40418) "found RR spike".

In 1990, Kelly prepared a tie sheet for this corner and said "Cor perpetuated by Owens-Illinois in 1965". He "Found R/R spike in C/L of Hwy 52. Set 3" Al. witness monument".

July 2009. Dave Tlusty. After discovering a problem (two monuments) at the quarter corner to the north, I measured the East line of Sections 2 and 11. I found that the current total distance is within 5 feet of the total of distances shown of the old railroad map, but the Kelly-Dohbratz location of this corner is about 100 feet south of where the corner would be using the distances shown on the old railroad map. Upon searching about 100 feet north, I found a railroad spike under one layer of pavement. Under that RR spike found and 6" below the pavement, I found the top of a 1 1/4" x 27" iron pipe. It is very old and has a 4 way coupling on the bottom. I believe this pipe to be where Melendy was in 1925. The distances from this pipe to the north and to the south agree very well with the distances shown on the old railroad right-of-way map. I therefore accept this pipe as the best perpetuation of the corner location and replace it with the monument shown on the front side of this sheet.

