

4331301 0020

U.S. PUBLIC LAND SURVEY MONUMENT RECORD

(Prepared and as required by S. A-E 7.08 WI Administrative Code)

The SOUTH 1/4 corner of Section 1, T. 33 N., R. 13 E., Langlade County, WI
Corner was (check all that apply)

- Restored through acceptance of an obliterated evidence location.
- Restored through acceptance of a found perpetuated location.
- Determined to be lost and re-established through proportionate methods. (show bearings and distances to PLSS corners used for proportioning.)
- Restored/recovered/re-established in a location that differs from a previously established position. (Show difference in plan view below.)
- Check here if additional information is shown on the reverse side of this form.

Describe record evidence, recovered physical evidence, occupational evidence, testimonial evidence, and all other evidence considered in the recovery/restoration of the corner.

1865- Government Surveyor J.L. Nowlin set 1/4 corner in original survey. BTs: 14" Lind N31°W, 30 links; 14" Lind, S25°E, 42 links.
 1965- Map #10398 of Langlade County Records prepared by W.H. Stuth of Owens-Illinois shows corner as "iron pipe or cap".
 1981- Dobbratz shows finding a wood post & iron pipe at corner location per map #40418 of Langlade County records.
 1990- Former surveyor Kelly found 4x4 scribed cedar post & 1 1/4" iron pipe along side. He replaced the iron pipe with an aluminum capped monument. tied out the corner, and filed a tie sheet.
 2012- Surveying in Section 1, I found the aluminum capped monument set by former surveyor Kelly in 1990. I also found 4 of Kelly's bearing trees.

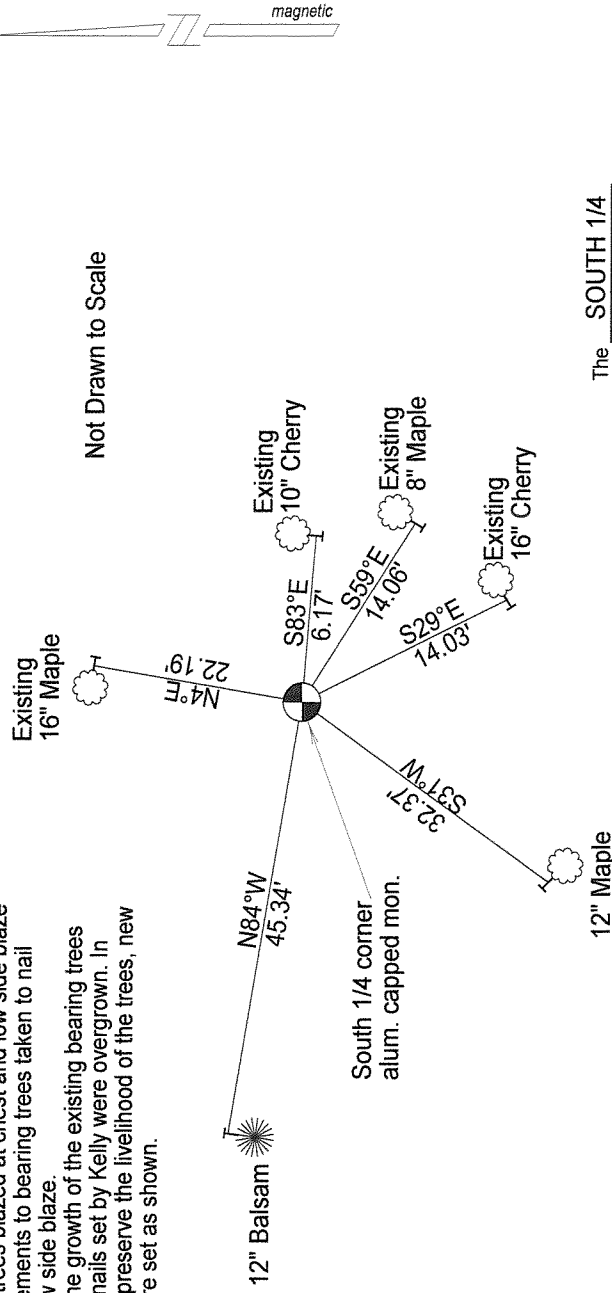
Physical description of the monument set:

I accept the 2.375" x 30" aluminum pipe with 3.25" aluminum cap as the corner and tied it out as follows.

Describe the accessories used to perpetuate the location of the corner. Include a plan view drawing and indicate accessories found/set. Describe measuring point on bearing trees. Show any topographic features that would aid in future recovery of the corner.

Notes:

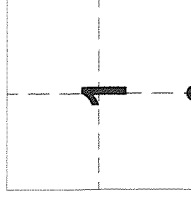
- Bearing trees blazed at chest and low side blaze
- Measurements to bearing trees taken to nail set in low side blaze.
- Due to the growth of the existing bearing trees existing nails set by Kelly were overgrown. In order to preserve the livelihood of the trees, new nails were set as shown.



The SOUTH 1/4

Corner of Section 1

T. 33 N., R. 13 E.
Langlade County, WI



● = Location of corner

SURVEYORS SEAL



I, Timothy J. Rusch certify that the corner location shown on this record was determined by me or under my direction and control and that this U.S. Public Land Survey Monument Record is correct and complete to the best of my knowledge and belief.

Timothy J. Rusch 11-30-2012
Signature Date