

CERTIFIED LAND CORNER RESTORATION

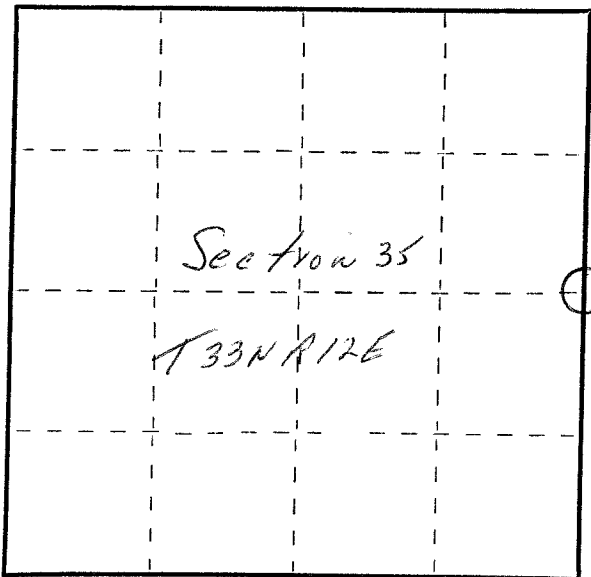
Index No. X-21

433/235 2000/1982  
FORM 985 H. C. MILLER CO., MILWAUKEE

State of Wisconsin }  
County of Lan glade } ss.

I Raymond J. Hallisy, do hereby certify that on the 4th day of December, 19 82, I found evidence of the 1/4 corner of Section 35 & 36 Township 33, North, Range 12E, Fourth Principal Meridian, as described hereon; and that from this evidence I established a new monument and accessories as described hereon to perpetuate the original location of this corner.

Resident witnesses:



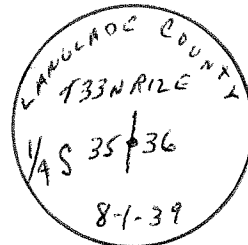
○ = Corner monument restored.

History of original corner establishment:

Corner set in the 1930 resurvey.

Description of corner evidence found:

4" pipe with brass cap.



Description of monument and accessories I established to perpetuate the original location of this corner.

New BT's

10"	Cherry	N74E	34.2'
10"	Cherry	S56E	54.4'
18"	Elm	S74W	95.6'

Dated at Antigo, Wis., this 4th day of December, 19 82

Signature Raymond J. Hallisy Title Land Surveyor Registration No. S-685  
(County Surveyor, Registered Land Surveyor, or other duly authorized official)

Office of Register of Deeds, County of \_\_\_\_\_, I hereby certify that the within instrument was filed in this office for record on the \_\_\_\_\_ day of \_\_\_\_\_, 19 \_\_\_\_\_ at \_\_\_\_\_ o'clock \_\_\_\_\_ M.

(Register of Deeds)

By \_\_\_\_\_ Deputy