

CERTIFIED LAND CORNER RESTORATION

Index No. A-21
32-12

State of Wisconsin }
 County of Lancaster } ss.

I, Raymond J. Hallisy, do hereby certify that on the 15th day of May, 19 82, I found evidence of the Section corner of 35, 36, 1, & 2 Township 32 & 33, North, Range 12E, Fourth Principal Meridian, as described hereon; and that from this evidence I established a new monument and accessories as described hereon to perpetuate the original location of this corner.

Resident witnesses:

.....

.....

.....

History of original corner establishment:

Corner set in the 1930 resurvey.

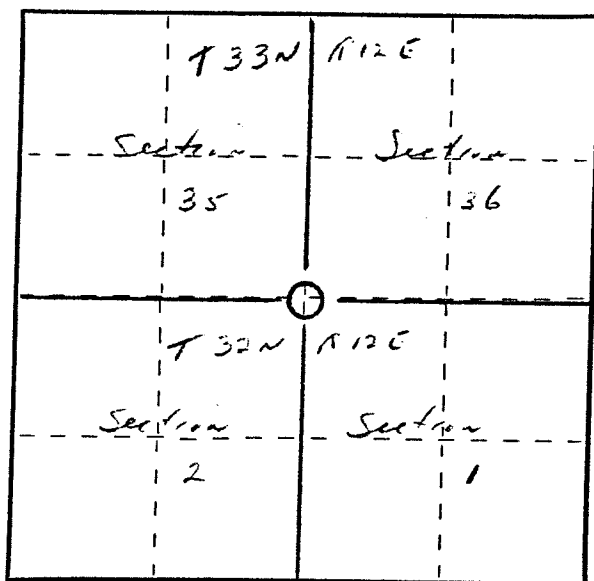
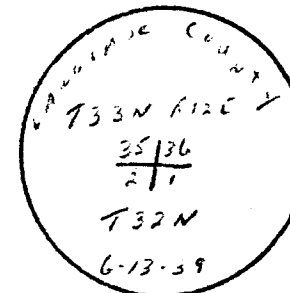
Description of corner evidence found:

4" iron pipe with brass cap. Rock mound.

Description of monument and accessories I established to perpetuate the original location of this corner.

New BT's

12"	Hard Maple	N82E	13.3'
12"	Hard Maple	N45E	15.6'
1 1/2"	Basswood	N68W	19'
1 1/2"	Hard Maple	S32W	23.6'



○ = Corner monument restored.

Dated at Antigo, Wis., this 15th day of May, 19 82

Signature Raymond J. Hallisy Title Land Surveyor Registration No. 57655
 (County Surveyor, Registered Land Surveyor, or other duly authorized official)

Office of Register of Deeds, County of _____, I hereby certify that the within instrument was filed in this office for record on the _____ day of _____, 19 _____ at _____ o'clock _____ M.

.....
 (Register of Deeds)

By _____ Deputy

FORM 985 M. C. MILLER CO., MILWAUKEE