

CERTIFIED LAND CORNER RESTORATION

Index No. X-13

State of Wisconsin }
County of Langlade } ss.

I Raymond J. Hallisy, do hereby certify that on the 7th day of February, 1981, I found evidence of the 1/4 corner of Section 33 & 34 Township 33, North, Range 12E, Fourth Principal Meridian, as described hereon; and that from this evidence I established a new monument and accessories as described hereon to perpetuate the original location of this corner.

Resident witnesses:

.....
.....
.....

History of original corner establishment:

Corner set in the 1930 resurvey.

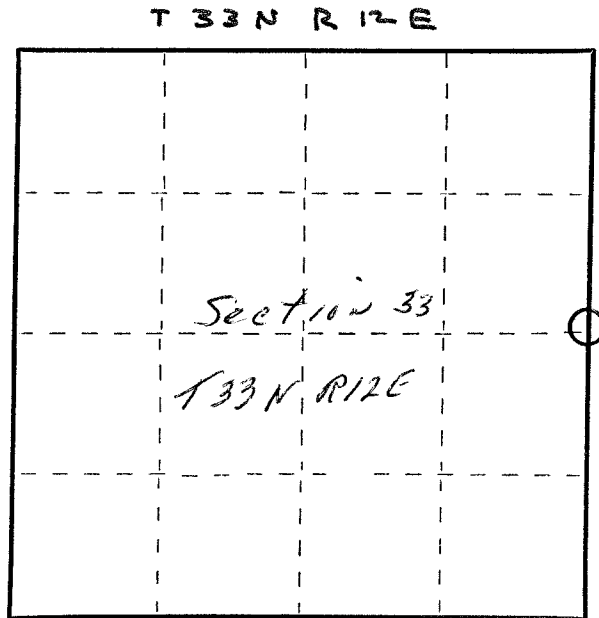
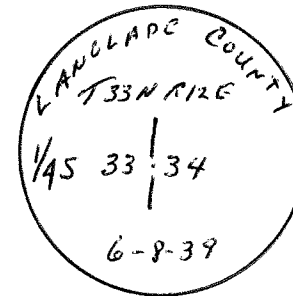
Description of corner evidence found:

4" pipe with brass cap in old fence corner, fence south and west.

Description of monument and accessories I established to perpetuate the original location of this corner.

New BT's

- 8" Hard Maple N45W 18'
- 10" Hard Maple N84E 12'
- 8" Basswood S40W 16'9"



○ = Corner monument restored.

Dated at Antigo, Wis., this 7th day of February, 1981

Signature, Raymond J. Hallisy Title Reg. Surveyor Registration No. S-685
(County Surveyor, Registered Land Surveyor, or other duly authorized official)

Office of Register of Deeds, County of....., I hereby certify that the within instrument was filed in this office for record on the.....day of....., 19..... at.....o'clock..... M.

.....
(Register of Deeds)

By.....Deputy

FORM 985 H. C. MILLER CO., MILWAUKEE