

CERTIFIED LAND CORNER RESTORATION

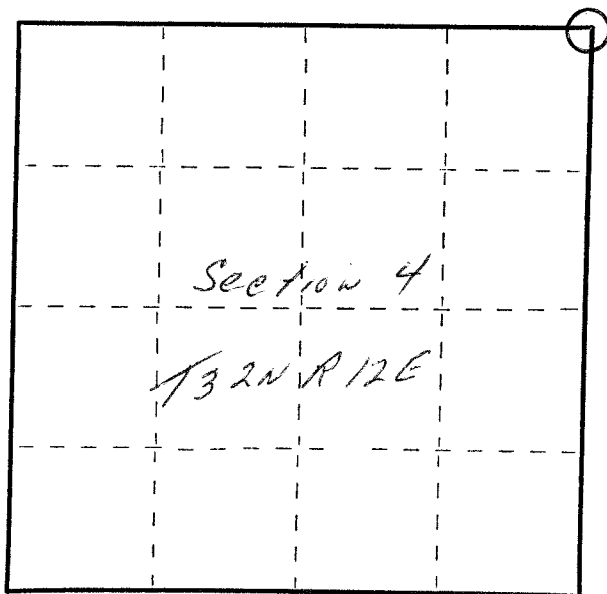
Index No. A-13

State of Wisconsin }  
County of Lanlade } ss.

I, Raymond J. Hallisy, do hereby certify that on the 20th day of November, 1982, I found evidence of the Section corner of 33, 34, 4, & 3 Township 33 & 32, North, Range 12E, Fourth Principal Meridian, as described hereon; and that from this evidence I established a new monument and accessories as described hereon to perpetuate the original location of this corner.

Resident witnesses:

.....  
.....  
.....



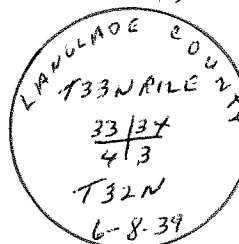
○ = Corner monument restored.

History of original corner establishment:

Corner set in the 1930 resurvey.

Description of corner evidence found:

4" pipe with brass cap, rock m ind.



Description of monument and accessories I established to perpetuate the original location of this corner.

New BT's

5"	Basswood	N60E	4.9'
7"	Hard Maple	S86E	10.9'
7"	Hard Maple	N30W	23.9'
10"	Hard Maple	S79W	15.9'

Dated at Antigo, Wis., this 20th day of November, 1982

Signature Raymond J. Hallisy Title Land Surveyor Registration No. S-685  
(County Surveyor, Registered Land Surveyor, or other duly authorized official)

Office of Register of Deeds, County of \_\_\_\_\_, I hereby certify that the within instrument was filed in this office for record on the \_\_\_\_\_ day of \_\_\_\_\_, 19\_\_\_\_ at \_\_\_\_\_ o'clock \_\_\_\_\_ M.

.....  
(Register of Deeds)

By \_\_\_\_\_ Deputy