

CERTIFIED LAND CORNER RESTORATION

Index No. A-5

32-12

State of Wisconsin }
County of LAFAYETTE } ss.

I RAYMOND S. HALLISY, do hereby certify that on the 30TH day of MARCH, 1985, I found evidence of the SECTION corner of 31, 32, 6, 5 Township 32 + 33, North, Range 2, Fourth Principal Meridian, as described hereon; and that from this evidence I established a new monument and accessories as described hereon to perpetuate the original location of this corner.

Resident witnesses:

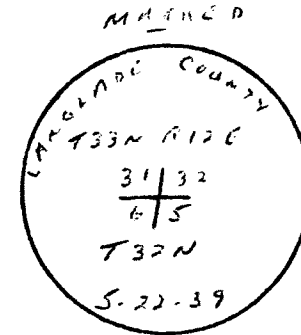
.....
.....
.....

History of original corner establishment:

1930 RE SURVEY

Description of corner evidence found:

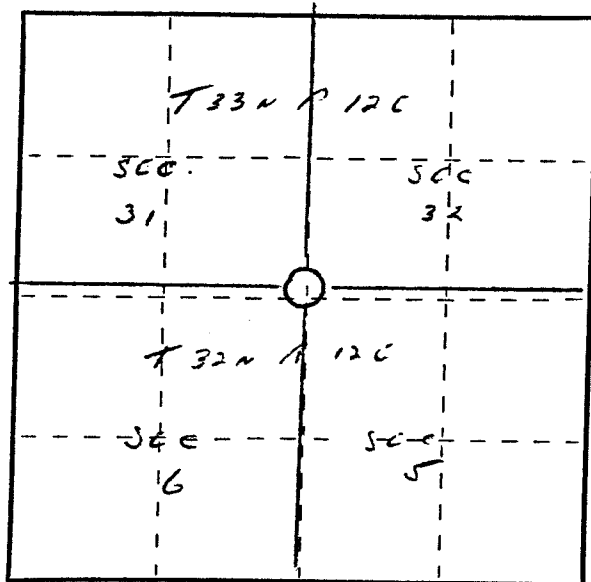
4" IRON PIPE WITH BASS CAP
BT'S
6" HARD MAPLE N24W 8.9'
10" TWIN HARD MAPLE S51E 10.0'



Description of monument and accessories I established to perpetuate the original location of this corner.

NEW BT'S

7" HARD MAPLE N2W 14.3'
6" HARD MAPLE N42E 21.6'



○ = Corner monument restored.

Dated at ANTIGO, Wis., this 30TH day of MARCH, 1985.

Signature Raymond S. Hallisy Title LAND SURVEYOR Registration No. S-685
(County Surveyor, Registered Land Surveyor, or other duly authorized official)

Office of Register of Deeds, County of....., I hereby certify that the within instrument was filed in this office for record on the.....day of....., 19..... at.....o'clock..... M.

.....
(Register of Deeds)

By.....Deputy