

LANGLADE COUNTY U.S. PUBLIC LAND CORNER RESTORATION

The Center of Section 30, T. 33 N., R. 12 E., Langlade County, WI.

Corner was: (check all that apply)

3312302020

- Restored through acceptance of an obliterated evidence location.
- Restored through acceptance of a found perpetuated location.
- Determined to be lost and re-established through proportionate methods.
Show bearings and distances to PLSS corners used for proportioning, and show original distances).
- Restored/recovered/re-established in a location that differs from a previously established position.
(Show difference in plan view below).
- Check here if addition information is shown on the reverse side of this form.

Describe record evidence, recovered physical evidence, occupational evidence, testimonial evidence and all other evidence considered in the recovery/restoration of the corner.

This corner was not monumented in the original government survey. In 1994, I surveyed in Section 30 and set the monument described below for the corner.

Physical description of the monument set:

Set a 3/4" x 30" rebar in mound of stones for the corner.

Describe the accessories used to perpetuate the corner. Include a plan view drawing and accessories found/set. Describe measuring point on bearing trees. Show any topographic features that would aid in future recovery of the corner.

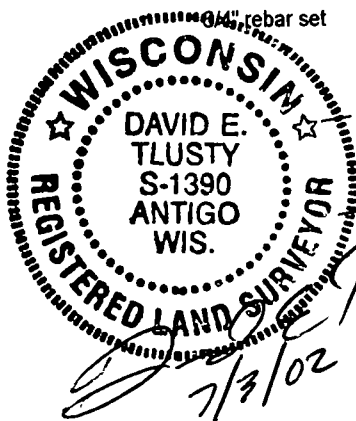
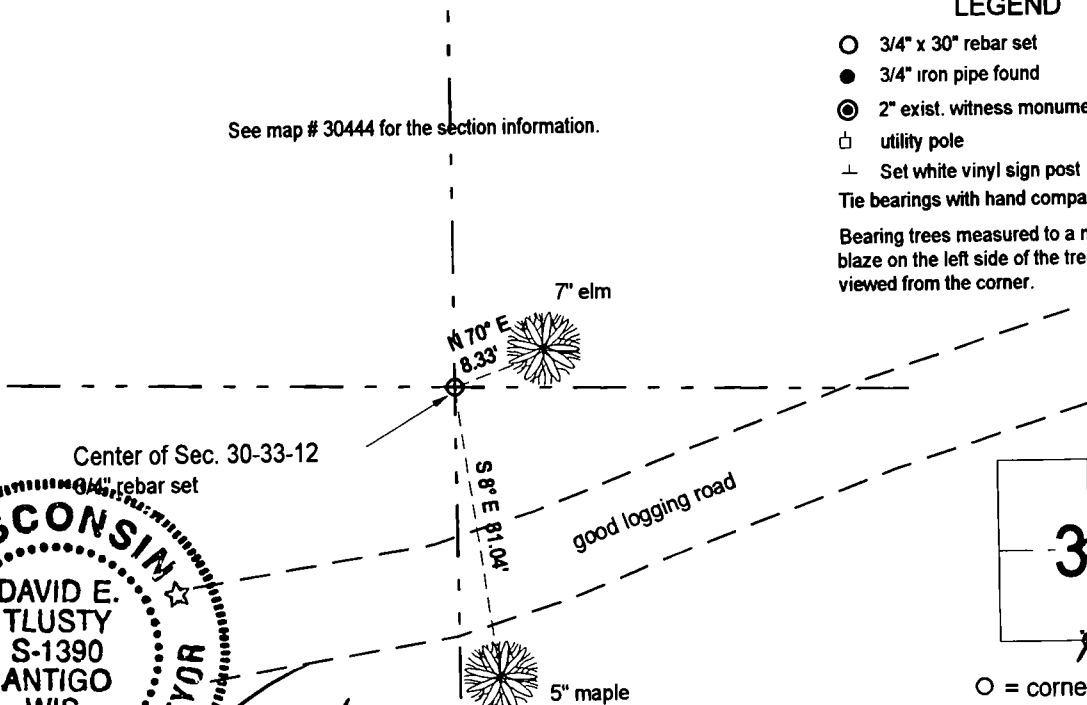
Field book 17-51



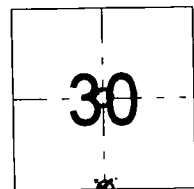
LEGEND

- 3/4" x 30" rebar set
- 3/4" iron pipe found
- ⊙ 2" exist. witness monument found
- utility pole
- ± Set white vinyl sign post
- Tie bearings with hand compass.
- Bearing trees measured to a nail in a low blaze on the left side of the tree as viewed from the corner.

See map # 30444 for the section information.



I, David E. Tlusty, Registered Land Surveyor, as Langlade County Surveyor, certify that the corner location on this record was determined by me and that this U.S. Public Land Survey Monument Record is correct to the best of my knowledge and belief.



○ = corner perpetuated
The Center of Section 30,
T. 33 N., R. 12 E.,
Langlade County, WI

Index No. T3 33-12