

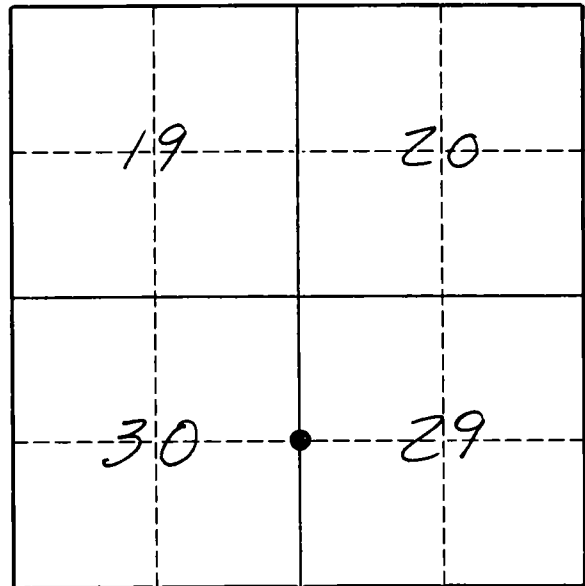
U. S. PUBLIC LAND SURVEY MONUMENT RECORD

INSTRUCTIONS.

This record shall show the location of the corner and shall include all of the following nine elements (a through i).

- (a) Identify the corner by reference to the U.S. public land survey system.
 ● = Corner monument restored.

The East Quarter corner of Section 30, Township 33 North, Range 12 East, Langlade County, Wisconsin.



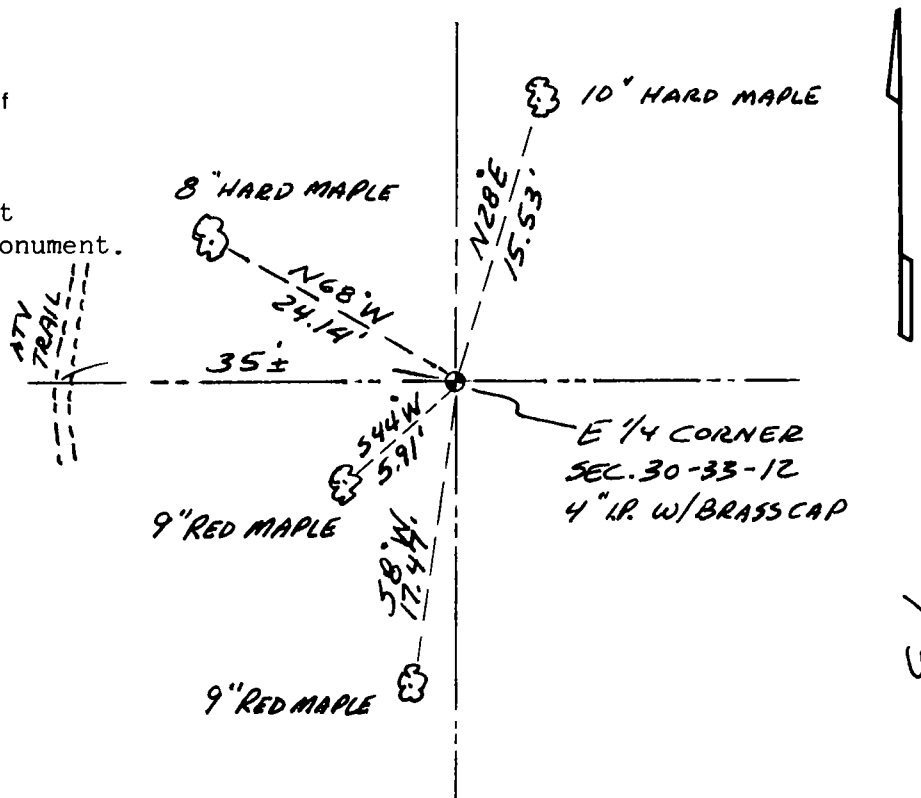
T. 33 N., R. 12 E.

- (b) Describe any record evidence, monument evidence, occupational evidence, testimonial evidence or any other material evidence you considered, and whether the monument was found or placed.
 The original corner was established in 1865 by James Nowlin. Original bearing trees: Birch, 15", N35°W, 25 lks., and a Hemlock, 15", S50°E, 35 lks. In the 1930's re-survey, a 1" iron pipe was found along with the original Birch BT standing and marks plain. A 4" iron pipe with a brass cap was set for the corner. On 11/13/82, Ray Hallisy found the 4" iron pipe with brass cap tipped over by logging equipment. He re-set the pipe upright and marked 4 bearing trees. On 05/02/94 I found the 4" iron pipe with brass cap frost heaved and loose in the ground. I re-set the monument so the top of it is 6" above the ground in a mound of stones. While re-digging the corner, I found the remains of a wood post point in the ground. I accept the location of this iron pipe as the best evidence of the original corner location and perpetuate it as shown below.

- (c) In the plan view drawing below, provide reference ties to at least 4 witness monuments, or, if the location is within a municipality, to at least 2 witness monuments. (Witness monuments shall be made of concrete, natural stone, iron or other equally durable material.)
 Describe witness monuments.

☁ = existing BT re-painted and measured to an aluminum nail set in a low blaze on the left side of each tree. Nailed "BT" sign on each tree facing the corner. *FB4-76*

- (d) Show a plan view drawing depicting the relevant monuments and reference ties which is sufficient in detail to enable accurate relocation of the corner monument if the corner monument is disturbed. Indicate north.
 Set a white vinyl sign post 1.5' north of the corner monument. Bearings are magnetic with hand compass.



SKETCH NOT TO SCALE!

CERTIFIED LAND CORNER RESTORATION

Index No. T-5

State of Wisconsin }
County of Langlade } ss.

I, Raymond J. Hallisy, do hereby certify that on the 13th day of November, 1982, I found evidence of the 1/4 corner of Section 29 & 30 Township 33, North, Range 12E, Fourth Principal Meridian, as described hereon; and that from this evidence I established a new monument and accessories as described hereon to perpetuate the original location of this corner.

Resident witnesses:

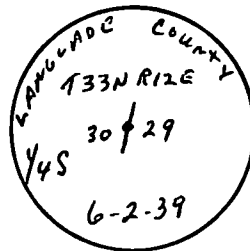
.....
.....
.....

History of original corner establishment:

Corner set in the 1930 resurvey.

Description of corner evidence found:

4" iron pipe with brass cap, tipped over by logging equipment.

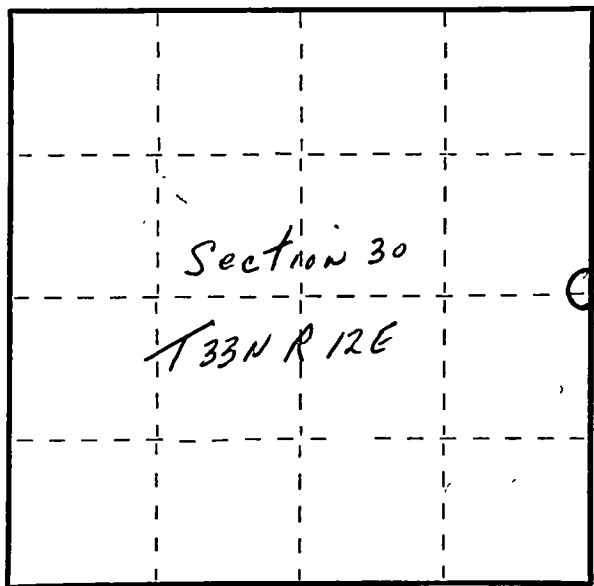


Description of monument and accessories I established to perpetuate the original location of this corner.

Reset pipe

New BT's

9"	Red Maple	S52W	5.3'
10"	Hard Maple	N31E	15.9'
8"	Hard Maple	N64W	24'
8"	Red Maple	S10W	16.9'



○ = Corner monument restored.

Dated at Antigo, Wis., this 13th day of November, 1982

Signature Raymond J. Hallisy Title Land Surveyor Registration No. S-685
(County Surveyor, Registered Land Surveyor, or other duly authorized official)

Office of Register of Deeds, County of _____, I hereby certify that the within instrument was filed in this office for record on the _____ day of _____, 19____ at _____ o'clock _____ M.

(Register of Deeds)

By _____ Deputy

FORM 985 M. E. MILLER CO., MILWAUKEE