

U. S. PUBLIC LAND SURVEY MONUMENT RECORD

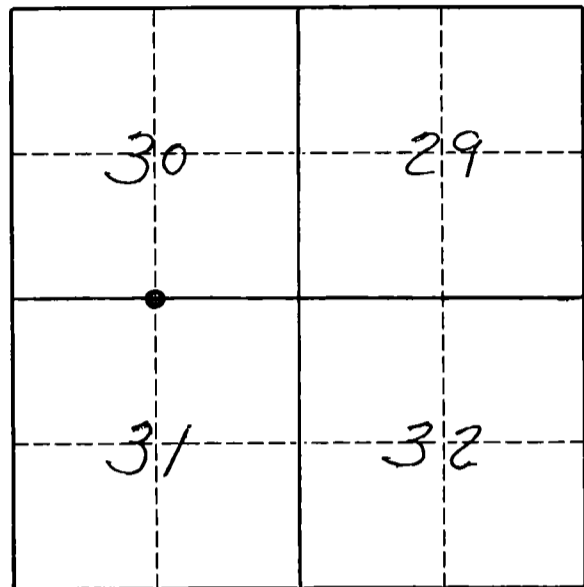
INSTRUCTIONS:

This record shall show the location of the corner and shall include all of the following nine elements (a through i).

- (a) Identify the corner by reference to the U.S. public land survey system

● = Corner monument restored.

The South Quarter Corner of Section 30, Township 33 North, Range 12 East, Langlade County, Wisconsin.



T. 33 N., R. 12 E.

- (b) Describe any record evidence, monument evidence, occupational evidence, testimonial evidence or any other material evidence you considered, and whether the monument was found or placed.

The original corner was established in 1865 by James Nowlin. Original BT's were: Lind, 10", S50°E, 20 lks., and a Lind, 8", N45°W, 25 lks. In the 1930's re-survey of part of this township, the rotten stumps of the original BT's and a stake were found, along with an unrecorded BT. A 4" iron pipe with brass cap was set for the corner, and a BO was measured: stone, N 1° E, 8 lks (5.3'). On 3/12/94, I found the 4" iron pipe with brass cap (dated 6-2-39), top of which is 9" above ground and leaning slightly north in good condition. I also find a stone, 12" x 60" up 8" at N 1° E, 5.3', not marked. I accept the 4" iron pipe with brass cap as the original corner location.

- (c) In the plan view drawing below, provide reference ties to at least 4 witness monuments, or, if the location is within a municipality, to at least 2 witness monuments. (Witness monuments shall be made of concrete, natural stone, iron or other equally durable material.)

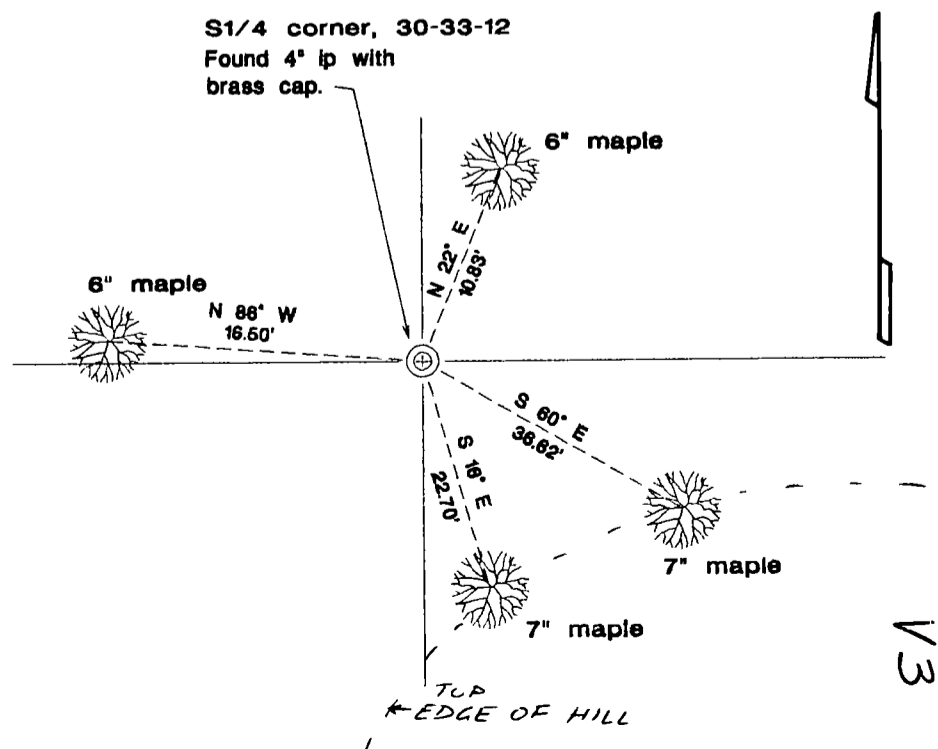
Describe witness monuments.

The 2 SE bearing trees are on the NW crest of a small hill, approx. 100' diameter, the highest knob in the area.

- (d) Show a plan view drawing depicting the relevant monuments and reference ties which is sufficient in detail to enable accurate relocation of the corner monument if the corner monument is disturbed. Indicate north.

BT's measured to an aluminum nail in a small low blaze on the left side of tree. BT's marked with a low scribed (BT) blaze facing corner; a high turtle blaze facing corner; and a BT sign facing corner. Painted trees and monument blue. Bearings magnetic with hand compass.

Set vinyl sign post, S 25° W, 2.0'



Describe any material discrepancy between the location of the corner as restored or reestablished and the location of that corner as previously restored or reestablished by distance and direction. Show the discrepancy on the plan view drawing under (d), above. Show the distances between the corner as previously restored or reestablished and (1) the corner as restored or reestablished, and (2) to at least 2 of the witness monuments shown on the drawing in (d), above.

NO DISCREPANCY.

(f) Was the corner restored through acceptance of (1) an obliterated evidence location, or (2) a found perpetuated location.?

(g & h) Was the corner reestablished through lost corner proportionate methods? If so, show the method, including the directions and distances to other public land survey corners used as evidence or used for proportioning in determining the corner location.

(i) I, DAVID E. TLUSTY

(type or print name)

certify that the corner location shown on this record was determined by me or under my direction and control and that this U.S. Public Land Survey Monument Record is correct and complete to the best of my knowledge and belief.



 3/15/94
Signature Date