

CERTIFIED LAND CORNER RESTORATION

Index No. V-7

State of Wisconsin }  
County of Lan glade } ss.

History of original corner establishment:

Corner set in the 1930 resurvey.

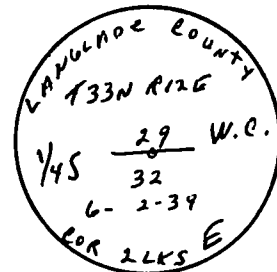
I Raymond J. Hallisy, do hereby certify that on the 13th day of November, 1982, I found evidence of the 1/4 witness corner of Section 29 & 32 Township 33, North, Range 12E, Fourth Principal Meridian, as described hereon; and that from this evidence I established a new monument and accessories as described hereon to perpetuate the original location of this corner.

Description of corner evidence found:

4" pipe with brass cap, stone with X 2 links East, Fence North and South

Resident witnesses:

.....  
.....  
.....

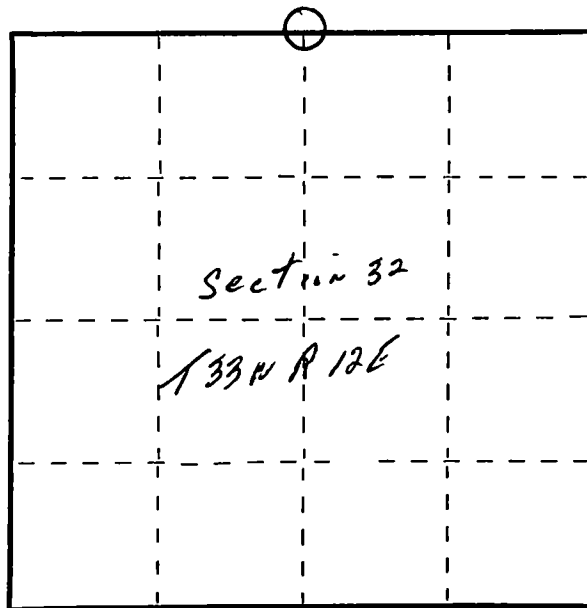


Description of monument and accessories I established to perpetuate the original location of this corner.

New BT's to Stone with X

5"	Clump Hard Maple	N54W	8'
9"	Hard Maple	S80W	27.2'
9"	Hard Maple	S48W	23.2'
3"	Elm	S34W	11.6'

FORM 985 H. C. MILLER CO., MILWAUKEE



○ = Corner monument restored.

Dated at Antigo, Wis., this 13th day of November, 1982.

Signature Raymond J. Hallisy Title Land Surveyor Registration No. S-685  
(County Surveyor, Registered Land Surveyor, or other duly authorized official)

Office of Register of Deeds, County of \_\_\_\_\_, I hereby certify that the within instrument was filed in this office for record on the \_\_\_\_\_ day of \_\_\_\_\_, 19\_\_\_\_ at \_\_\_\_\_ o'clock \_\_\_\_\_ M.

(Register of Deeds)

By \_\_\_\_\_ Deputy