

CERTIFIED LAND CORNER RESTORATION

Index No. V-13

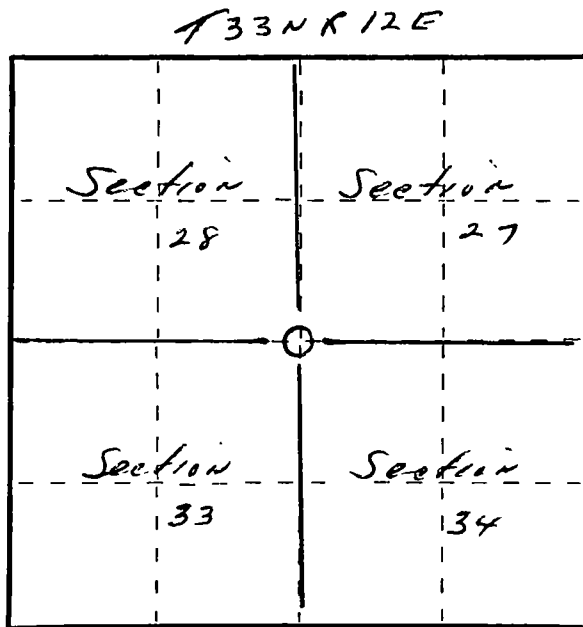
State of Wisconsin }
County of Langlade } ss.

I, Raymond J. Hallsy, do hereby certify that on the 7th day of February, 1981, I found evidence of the Section corner of 27, 28, 33, & 34 Township 33, North, Range 12E, Fourth Principal Meridian, as described hereon; and that from this evidence I established a new monument and accessories as described hereon to perpetuate the original location of this corner.

Resident witnesses:

.....
.....
.....

FORM 985 K. C. MILLER CO., MILWAUKEE



○ = Corner monument restored.

History of original corner establishment:

Corner reset in the 1930 resurvey.

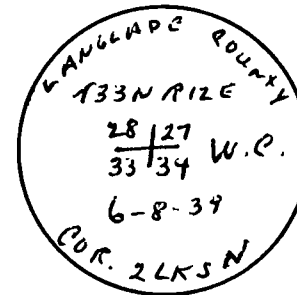
Description of corner evidence found:

Stone with X as corner, 4" pipe with brass cap as witness corner 2 Links south
Pine stump 36" N30E 40.1 Links (Marks gone)
Large Rock with X N28W 42.4 Links

Description of monument and accessories I established to perpetuate the original location of this corner.

New BT's to Witness Corner

- 8" Cherry S16E 59'6"
- 8" Cherry Clump S35W 28'
- 8" Aspen N80E 18'5"



Dated at Antigo, Wis., this 7th day of February, 1981.

Signature Raymond J. Hallsy Title Reg. Surveyor Registration No. S-685
(County Surveyor, Registered Land Surveyor, or other duly authorized official)

Office of Register of Deeds, County of _____, I hereby certify that the within instrument was filed in this office for record on the _____ day of _____, 19____ at _____ o'clock _____ M.

.....
(Register of Deeds)

By _____ Deputy