

LANGLADE COUNTY U.S. PUBLIC LAND CORNER RESTORATION

The East 1/4 corner of Section 27, T. 33 N., R. 12 E., Langlade County, WI.

Corner was: (check all that apply)

- Restored through acceptance of an obliterated evidence location.
- Restored through acceptance of a found perpetuated location.
- Determined to be lost and re-established through proportionate methods.
 - Show bearings and distances to PLSS corners used for proportioning, and show original distances).
 - Restored/recovered/re-established in a location that differs from a previously established position.
- (Show difference in plan view below).
- Check here if additional information is shown on the reverse side of this form.

4331227 2000 2020

Describe record evidence, recovered physical evidence, occupational evidence, testimonial evidence and all other evidence considered in the recovery/restoration of the corner.

The original corner was established in 1865 by James L. Nowlin. Original bearing trees: birch, 20", N80W, 30 links and a hemlock, 15", S83E, 23 links.
 In the 1930's resurvey of part of this township, the corner was described as: "To orig 1/4 cor, found old stake with mound of rock at base and remains of orig birch stp 20", N80W, 30 lks. New grey stone, S14E, 31.2 lks."
 In 1980, Ray Hallisy found the 1930's monument and stone BO SE. He marked three new BT's.
 On March 23, 2016, D. Tlusty and Rick Dedejne found the 1930's monument in good condition, N45E, 80 feet from logging road. Found Hallisy maple BT and remarked it. Added new BT's shown below. .

Physical description of the monument set:

Accepted monument as found.
 Set bare steel channel post, N55W, 1' from corner monument.

Describe the accessories used to perpetuate the corner. Include a plan view drawing and accessories found/set. Describe measuring point on bearing trees. Show any topographic features that would aid in future recovery of the corner.

Langlade County Coordinates NAD83(91)
 N 403345.058 E 667953.386 4INIPBCFND2XRTK:03232016

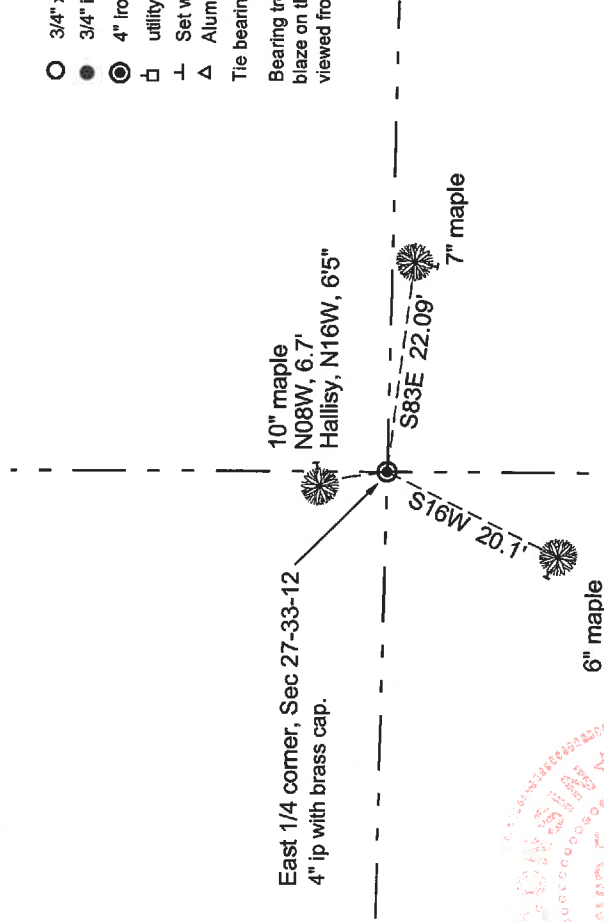
Field book 13-52



LEGEND

- 3/4" x 30" rebar set
 - 3/4" iron pipe found
 - ⊙ 4" iron pipe with brass cap found
 - ⊔ utility pole
 - ⊥ Set white vinyl sign post
 - △ Alum. nail in side blaze on tree. (Meas. point)
- Tie bearings with hand compass.

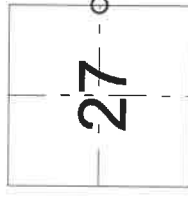
Bearing trees measured to a nail in a low blaze on the left side of the tree as viewed from the corner.



David E. Tlusty
 3/4/2020

I, David E. Tlusty, Registered Land Surveyor, as Langlade County Surveyor, certify that the corner location on this record was determined by me and that this U.S. Public Land Survey Monument Record is correct to the best of my knowledge and belief.

Index No. T17 33-12



○ = corner perpetuated
 The East 1/4 corner of Section 27,
 T. 33 N., R. 12 E.,
 Langlade County, WI

CERTIFIED LAND CORNER RESTORATION

Index No. T-17

State of Wisconsin }
County of Langlade } ss.

I Raymond J. Hallisy, do hereby certify that on the 7th day of February, 1981, I found evidence of the 1/4 corner of Section 26 & 27 Township 33, North, Range 12E, Fourth Principal Meridian, as described hereon; and that from this evidence I established a new monument and accessories as described hereon to perpetuate the original location of this corner.

Resident witnesses:

.....
.....
.....

History of original corner establishment:

Corner set in the 1930 resurvey.

Description of corner evidence found:

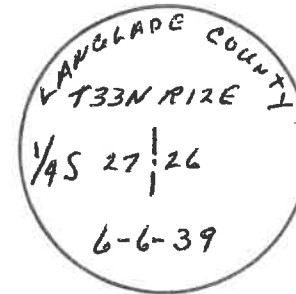
4" pipe with brass cap, rock mound.
Stone B.O. S14E 31.2 Links.

*3/23/16
DIDNT LOOK FOR
STONES.*

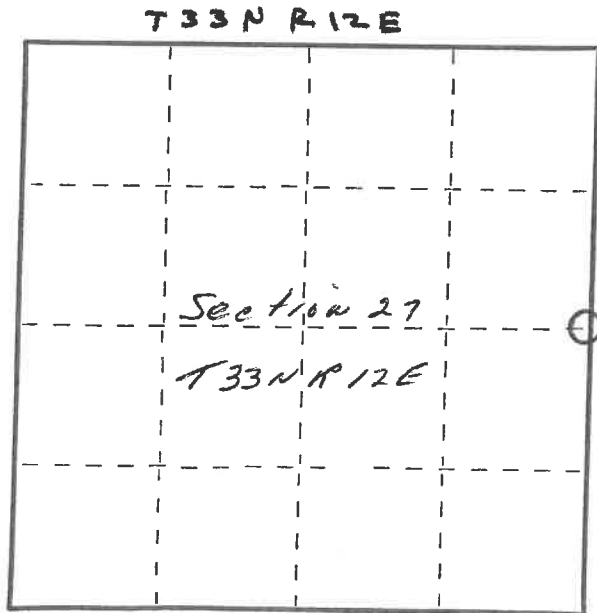
Description of monument and accessories I established to perpetuate the original location of this corner.

New BT's

- 12" Hard Maple N21E 13'5"
- 8" Hard Maple N16W 6'5"
- 10" Basswood S48W 11'4"



FORM 985 H. C. MILLER CO., MILWAUKEE



○ = Corner monument restored:

Dated at Antigo, Wis., this 7th day of February, 19 81

Signature Raymond J. Hallisy Title Reg. Surveyor Registration No. S-685
(County Surveyor, Registered Land Surveyor, or other duly authorized official)

Office of Register of Deeds, County of _____, I hereby certify that the within instrument was filed in this office for record on the _____ day of _____, 19 _____ at _____ o'clock _____ M.

.....
(Register of Deeds)

By _____ Deputy