

CERTIFIED LAND CORNER RESTORATION

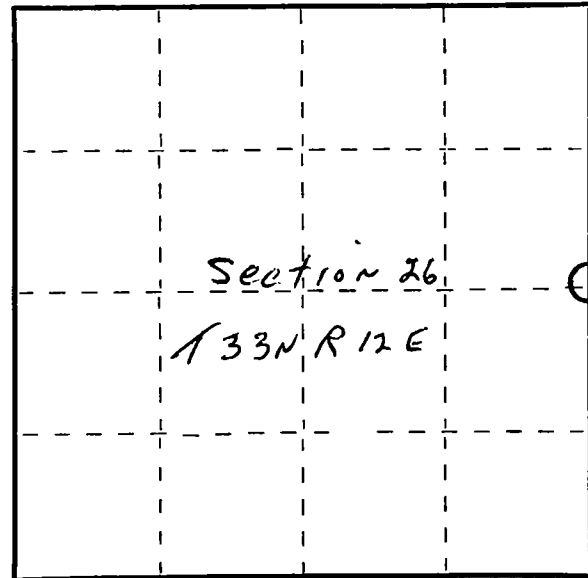
Index No. T-21

State of Wisconsin }
County of Dane } ss.

I, Raymond F. Helms, do hereby certify that on the 15 day of January, 1980, I found evidence of the 1/4 corner of Section 25 & 26 Township 33, North, Range 12E, Fourth Principal Meridian, as described hereon; and that from this evidence I established a new monument and accessories as described hereon to perpetuate the original location of this corner.

Resident witnesses:

.....
.....
.....



○ = Corner monument restored.

History of original corner establishment:

Corner set in the 1930 resurvey

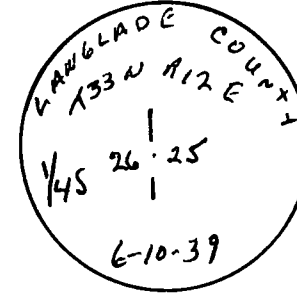
Description of corner evidence found:

4" iron pipe with Brass Cap

Description of monument and accessories I established to perpetuate the original location of this corner.

New BT's

8" Hard Maple	N73W	6' 3"
6" Hard Maple	N60E	3' 11"
4" Hard Maple	N13E	6' 5"



Dated at Antigo, Wis., this 19th day of January, 1980.

Signature Raymond F. Helms Title Surveyor Registration No. S-685
(County Surveyor, Registered Land Surveyor, or other duly authorized official)

Office of Register of Deeds, County of Dane, I hereby certify that the within instrument was filed in this office for record on the 15 day of January, 1980 at 10 o'clock A. M.

(Register of Deeds)

By.....Deputy

FORM 985 H. C. MILLER CO., MILWAUKEE