

LANGLADE COUNTY U.S. PUBLIC LAND CORNER RESTORATION

The South 1/4 corner of Section 26, T. 33 N., R. 12 E., Langlade County, WI.

Corner was: (check all that apply) 4331226 0020 2020

- Restored through acceptance of an obliterated evidence location.
- Restored through acceptance of a found perpetuated location.
- Determined to be lost and re-established through proportionate methods.
- Show bearings and distances to PLSS corners used for proportioning, and show original distances).
- Restored/recovered/re-established in a location that differs from a previously established position.
- (Show difference in plan view below).
- Check here if additional information is shown on the reverse side of this form.

Describe record evidence, recovered physical evidence, occupational evidence, testimonial evidence and all other evidence considered in the recovery/restoration of the corner.

The original corner was established in 1865 by James Nowlin. Original bearing trees: hemlock, 12", N40W, 15 links and a sugar, 8", S35E, 25 links. In the 1930's resurvey of part of this township, the corner was described as "found orig 1/4 cor silk stg. (standing) several trees with cruiser marks on them. New maple, 12", N50W, 51 links". On March 22, 2016 D. Tlusty and Rick Dedejne found the 1930's monument in place, leaning slightly. Re-dug it and set it plumb, top is up 8" above ground. Made reference ties as shown below.

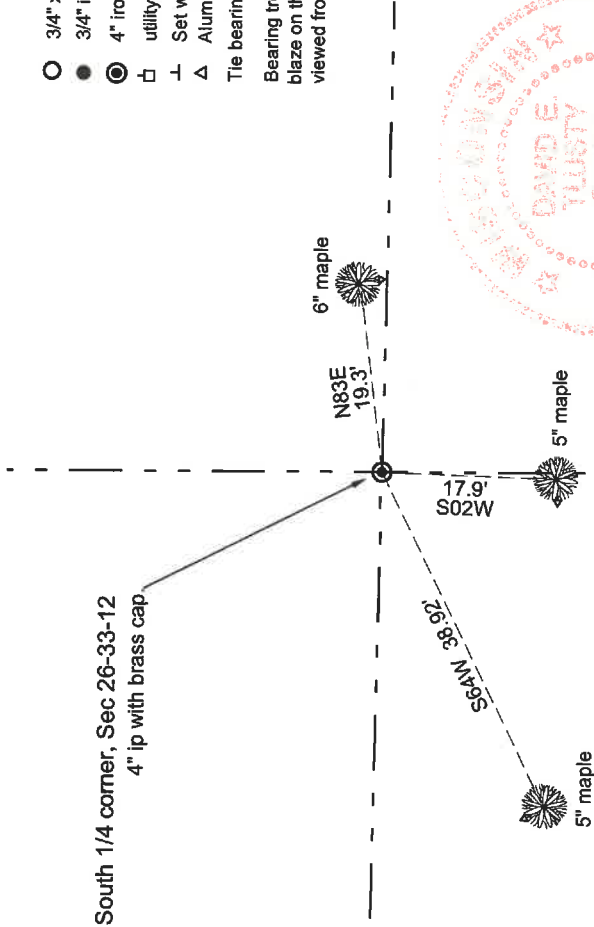
Physical description of the monument set:

Redug and straightened the existing 4" iron pipe with brass cap, in mound of stone.
Set white sign post 0.3' south of monument.

Describe the accessories used to perpetuate the corner. Include a plan view drawing and accessories found/set. Describe measuring point on bearing trees. Show any topographic features that would aid in future recovery of the corner.

Langlade County Coordinates NAD83(91)
400943.960 670442.604 4INIPBCFND2XRTK:03232016

South 1/4 corner, Sec 26-33-12
4" ip with brass cap



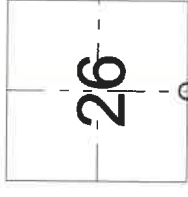
LEGEND

- 3/4" x 30" rebar set
 - 3/4" iron pipe found
 - ⊙ 4" iron pipe with brass cap found
 - ⊥ utility pole
 - ⊥ Set white vinyl sign post
 - △ Alum. nail in side blaze on tree. (Meas. point)
- Tie bearings with hand compass.

Bearing trees measured to a nail in a low blaze on the right side of the tree as viewed from the corner.



David E. Tlusty
3/5/2020



Index No. V19 33-12

○ = corner perpetuated
The South 1/4 corner of Section 26,
T. 33 N., R. 12 E.,
Langlade County, WI

I, David E. Tlusty, Registered Land Surveyor, as Langlade County Surveyor, certify that the corner location on this record was determined by me and that this U.S. Public Land Survey Monument Record is correct to the best of my knowledge and belief.