

CERTIFIED LAND CORNER RESTORATION

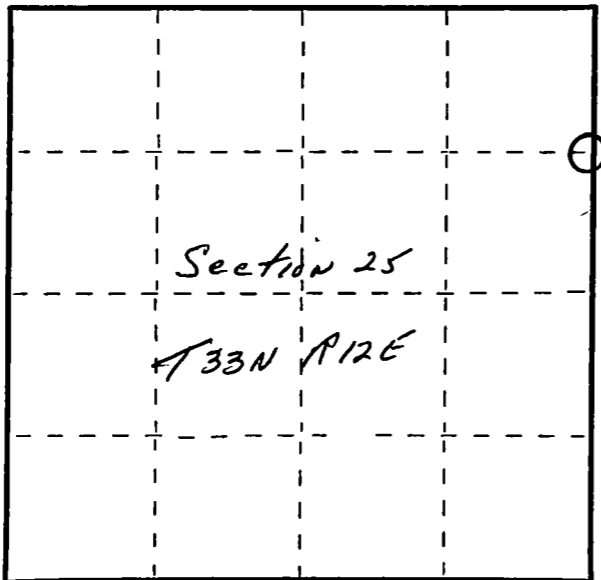
Index No. S-25

State of Wisconsin }  
 County of Langlade } ss.

I, Raymond J. Hallisy, do hereby certify that on the 11th day of December, 1982, I found evidence of the N 1/16 corner of Section 25 & 30 Township 33, North, Range 12E & 13E, Fourth Principal Meridian, as described hereon; and that from this evidence I established a new monument and accessories as described hereon to perpetuate the original location of this corner.

Resident witnesses:

.....  
 .....  
 .....



○ = Corner monument restored.

History of original corner establishment:

Corner set in the 1930 resurvey.

Description of corner evidence found:

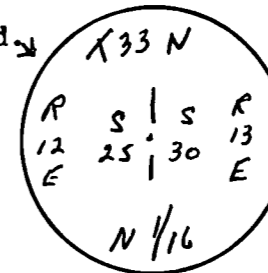
Found wood post down, Scribed N 1/16, point intact.

Description of monument and accessories I established to perpetuate the original location of this corner.

Set 1 1/2" iron pipe with aluminum cap, marked

New BT's

3"	Hard Maple	N82E	8.3 Lks
30"	Hard Maple	N80W	37.6 Lks
12"	Hard Maple	N57W	42.9 Lks



Dated at Antigo, Wis., this 11th day of December, 1982

Signature Raymond J. Hallisy Title Land Surveyor Registration No. S-685  
 (County Surveyor, Registered Land Surveyor, or other duly authorized official)

Office of Register of Deeds, County of....., I hereby certify that the within instrument was filed in this office for record on the..... day of....., 19..... at..... o'clock..... M.

(Register of Deeds)

By..... Deputy

FORM 985 R. C. MILLER CO., MILWAUKEE