

CERTIFIED LAND CORNER RESTORATION

Index No. V.25

3-12

State of Wisconsin }  
County of Lanola } ss.

I Raymond J. Hallisy, do hereby certify that on the 21st day of April, 19 79, I found evidence of the SECTION corner of 25, 30, 31, 36 Township 73, North, Range 12, 13 East, Fourth Principal Meridian, as described hereon; and that from this evidence I established a new monument and accessories as described hereon to perpetuate the original location of this corner.

History of original corner establishment:

1939 Resurvey

Description of corner evidence found:

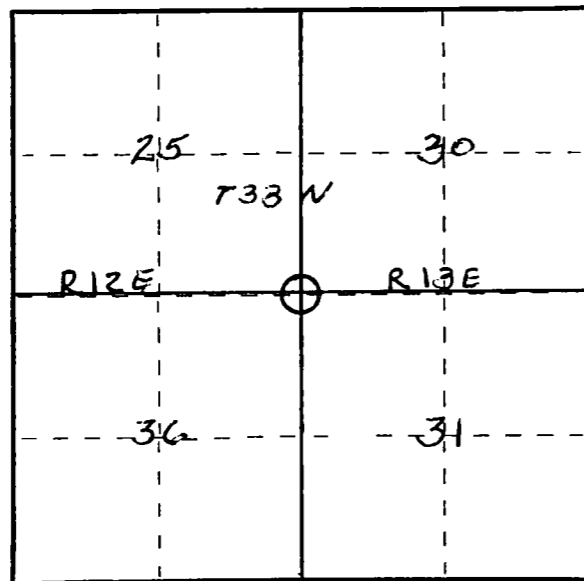
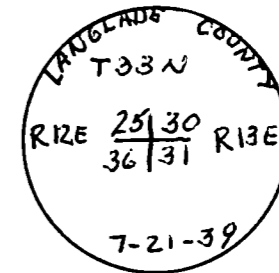
4 inch IRON PIPE WITH BRASS CAP

Resident witnesses:

.....  
.....  
.....

Description of monument and accessories I established to perpetuate the original location of this corner.

New B.T.'s  
Hard Maple 5" 540W 14' 7"  
" " 8" 576W 11' 3"  
" " 8" N26E 10'  
BASSWOOD 8" 558E 13' 7"



○ = Corner monument restored.

Dated at Antigo, Wis., this 21st day of April, 19 79.

Signature Raymond J. Hallisy Title Reg. Land Surveyor Registration No. 5685  
(County Surveyor, Registered Land Surveyor, or other duly authorized official)

Office of Register of Deeds, County of \_\_\_\_\_, I hereby certify that the within instrument was filed in this office for record on the \_\_\_\_\_ day of \_\_\_\_\_, 19 \_\_\_\_\_ at \_\_\_\_\_ o'clock \_\_\_\_\_ M.

.....  
(Register of Deeds)

By \_\_\_\_\_ Deputy