

CERTIFIED LAND CORNER RESTORATION

Index No. P-22

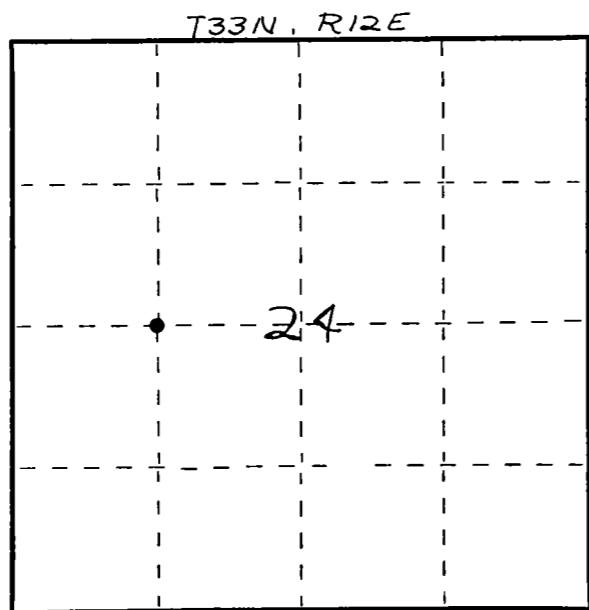
State of Wisconsin }
 County of LANGLADE } ss.

I, WILLIAM F. KELLY, do hereby certify that on the 28th day of JULY, 1982, I found evidence of the W. 1/8 corner of an E-W 1/4 LINE, SECT. 24 Township 33, North, Range 12 EAST, Fourth Principal Meridian, as described hereon; and that from this evidence I established a new monument and accessories as described hereon to perpetuate the original location of this corner.

Resident witnesses:

.....

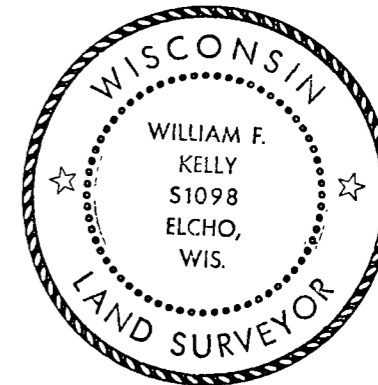
FORM 985 H. C. MILLER CO., MILWAUKEE



○ = Corner monument restored.

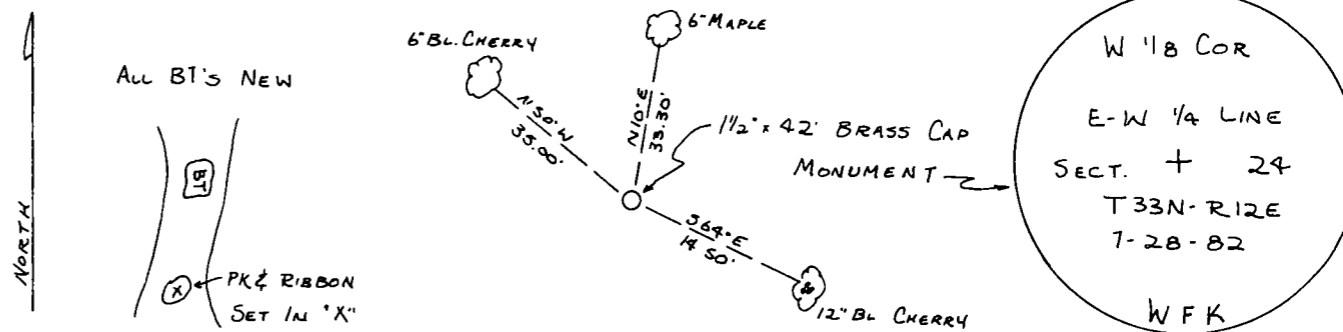
History of original corner establishment:
ORIGINAL CORNER NOT ESTABLISHED
BY GOV'T SURVEY

Description of corner evidence found:
Corner Established at mid point
between Center of Section 24
and W 1/4 Cor. Sect 24



William F. Kelly

Description of monument and accessories I established to perpetuate the original location of this corner.



Dated at ELCHO, Wis., this 28th day of JULY, 1982.

Signature William F. Kelly Title COUNTY SURVEYOR Registration No. 1098
 (County Surveyor, Registered Land Surveyor, or other duly authorized official)

Office of Register of Deeds, County of _____, I hereby certify that the within instrument was filed in this office for record on the _____ day of _____, 19____ at _____ o'clock _____ M.

.....
 (Register of Deeds)

By..... Deputy