

CERTIFIED LAND CORNER RESTORATION

Index No. P-23

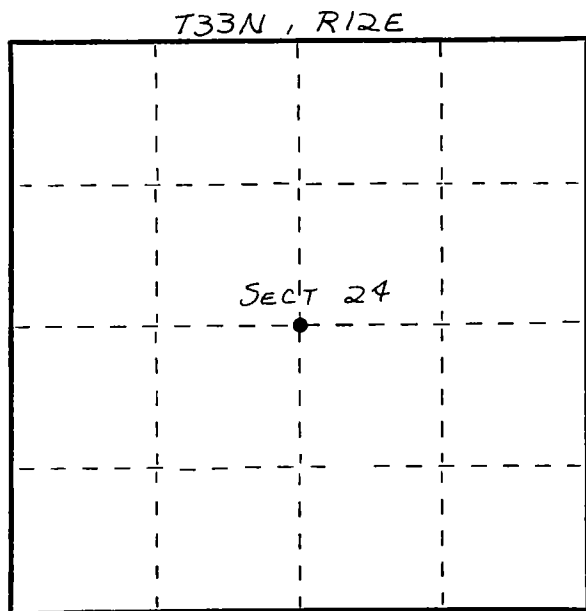
State of Wisconsin } ss.
County of LANGLADE

I WILLIAM F. KELLY, do hereby certify that on the 28th day of JULY, 1982, I found evidence of the CENTER corner of SECT. 24 Township 33 North, Range 12 EAST, Fourth Principal Meridian, as described hereon; and that from this evidence I established a new monument and accessories as described hereon to perpetuate the original location of this corner.

Resident witnesses:

.....
.....
.....

FORM 985 M. C. MILLER CO., MILWAUKEE



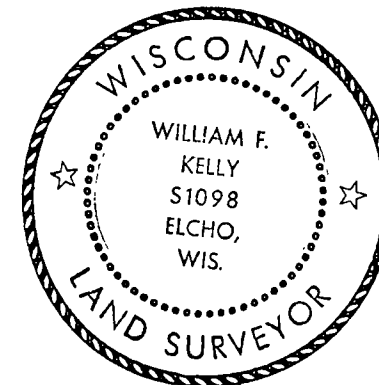
○ = Corner monument restored.

History of original corner establishment:

ORIGINAL CORNER, ESTABLISHED BY GOV'T SURVEY.
Not

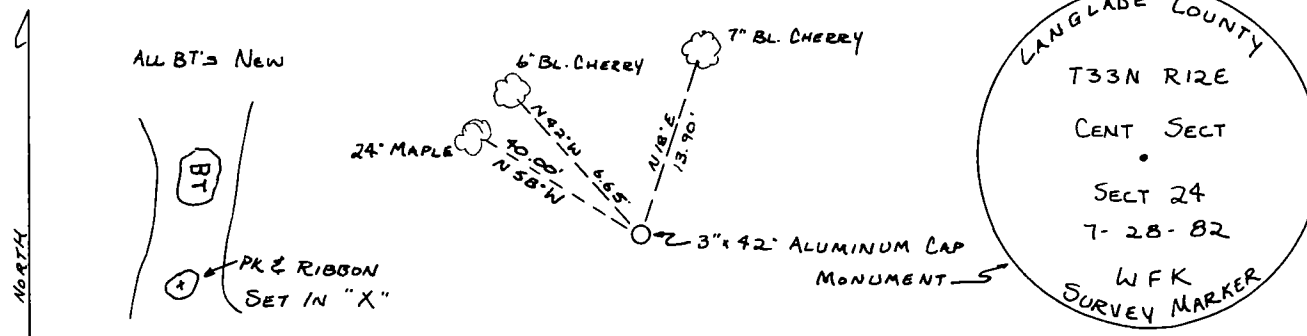
Description of corner evidence found:

set corner by intersection of E-W and N-S 1/4 lines. The 14 corners were all found in place from 1935 Resurvey of Twp.



William F. Kelly

Description of monument and accessories I established to perpetuate the original location of this corner.



Dated at ELCHO, Wis., this 28th day of JULY, 1982.

Signature William F. Kelly Title COUNTY SURVEYOR Registration No. 1098
(County Surveyor, Registered Land Surveyor, or other duly authorized official)

Office of Register of Deeds, County of....., I hereby certify that the within instrument was filed in this office for record on the.....day of....., 19..... at.....o'clock..... M.

(Register of Deeds)

By.....Deputy