

# LANGLADE COUNTY U.S. PUBLIC LAND CORNER RESTORATION

The East quarter corner of Sections 24, T. 33 N., R. 12 E., Langlade County, WI.

**Corner was: (check all that apply)**

- Restored through acceptance of an obliterated evidence location.
- Restored through acceptance of a found perpetuated location.
- Determined to be lost and re-established through proportionate methods.
- Show bearings and distances to PLSS corners used for proportioning, and show original distances).
- Restored/recovered/re-established in a location that differs from a previously established position.
- (Show difference in plan view below).
- Check here if additional information is shown on the reverse side of this form.

4331224 2000 2019

**Describe record evidence, recovered physical evidence, occupational evidence, testimonial evidence and all other evidence considered in the recovery/restoration of the corner.**

The original corner was established in 1865 by James Nowlin. Original bearing trees: hemlock, 11", S40W, 33 lks and a cedar, 10", N57E, 4 links.  
 In the 1930's resurvey of part of this township, the corner was described as "Did not find old corner. Cor. by prop. maple, 6", S 52 1/2 W, 38.2 lks.". In 1979, Ray Hallisy found 4" iron pipe with brass cap, rock mound, old B.T. cedar stump, 8" N37E, 22.7 links.and marked three new BT'S.  
 11/30/2016 Luke Williams and I found the 1939 monument frost heaved and leaning. We replaced it with a new 1" x 42" aluminum monument with a 3 1/4" aluminum cap. Corner falls in north ditch of logging road that runs N45E - S45W and is approximately 35 feet west of a gate on said logging road.

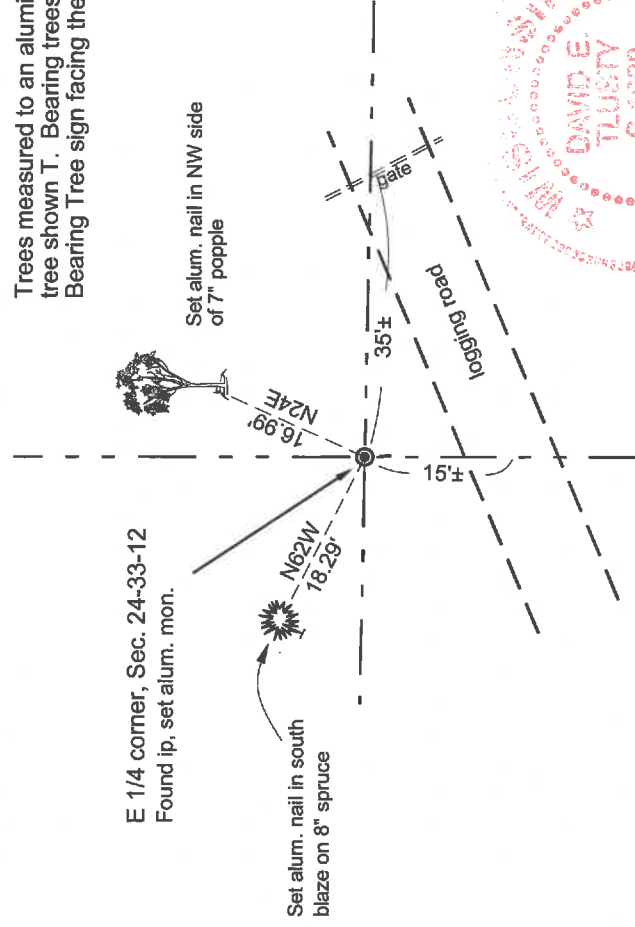
**Physical description of the monument set:**

I replaced the existing monument as described above.  
 Found existing DNR sign post, N60W, 1.3' from corner monument.

**Describe the accessories used to perpetuate the corner. Include a plan view drawing and accessories found/set. Describe measuring point on bearing trees. Show any topographic features that would aid in future recovery of the corner.**

**LEGEND**

- 4" iron pipe fnd, alum mon set



Langlade County Coordinates NAD83(2011)  
 Northing(Y) 678483.22    Easting(X) 2x rt ave alum mon 1/4cor  
 Description



O = corner perpetuated  
 The East 1/4 corner  
 of Section 24,  
 T. 33 N., R. 12 E.,  
 Langlade County, WI

CERTIFIED LAND CORNER RESTORATION

Index No. P-25

State of Wisconsin }  
County of Lan glade } ss.

History of original corner establishment:  
1939 RESURVEY

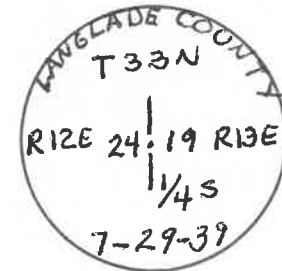
I Raymond J. Hallisy, do hereby certify that on the 21st day of April, 1979, I found evidence of the Y4 corner of Section 19, 24 Township 33, North, Range 12, 13 EAST, Fourth Principal Meridian, as described hereon; and that from this evidence I established a new monument and accessories as described hereon to perpetuate the original location of this corner.

Description of corner evidence found:  
Hinch Iron pipe with Brass cap  
Rock mound  
old B.T.  
Cedar stump 8" N37E 22.7 LKS

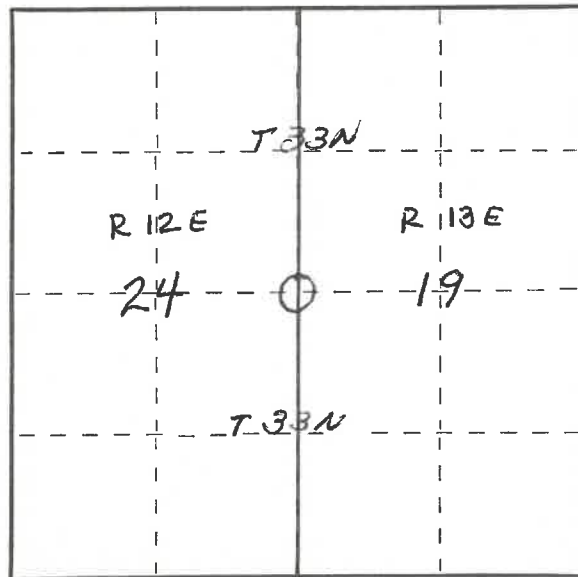
Resident witnesses:

Description of monument and accessories I established to perpetuate the original location of this corner.

New B.T.s  
BALSAM 6" N32W 8 LKS  
" 4" 90W 8.8 LKS  
Aspen 7" N44E 27.7 LKS



FORM 965 H. C. MILLER CO., MILWAUKEE



○ = Corner monument restored.

Dated at Antigo, Wis., this 21st day of April, 1979.

Signature Raymond J. Hallisy Title Reg. Land Surveyor Registration No. 5685  
(County Surveyor, Registered Land Surveyor, or other duly authorized official)

Office of Register of Deeds, County of \_\_\_\_\_, I hereby certify that the within instrument was filed in this office for record on the \_\_\_\_\_ day of \_\_\_\_\_, 19\_\_\_\_ at \_\_\_\_\_ o'clock \_\_\_\_\_ M.

(Register of Deeds)

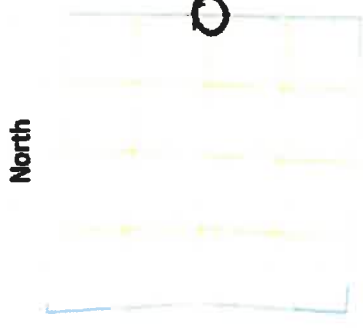
By \_\_\_\_\_ Deputy

PLSS field condition report

Date: 4-22-20 Time of day: 7:30 am

By: Gary Burkland

Section 24 Town 33N Range 12E  
(circle corner location on diagram)



4331224 2000

Does the monument appear to be tilted, smashed, uprooted, covered or otherwise damaged by the windstorm?  
YES  NO

Are any bearing trees broken, uprooted, missing or otherwise damaged by the windstorm?  
YES  NO

1 broken  
1 uprooted

TAKE PICTURES

For the first four pictures, do them in this order:

Looking north, looking east, looking south, looking west and, by standing about 6 feet behind the monument, include the monument in each picture.

Then take a picture of the top of the monument, close enough to be able to read what is stamped on the cap. Make sure all pictures are in focus.

\* Monument doesn't appear to be damaged by storm, but was pulled out laying in ditch.

P25 3312