

CERTIFIED LAND CORNER RESTORATION

33-12
Index No. ~~.....~~ Q-1

State of Wisconsin }
County of Langlade } ss.

I, Raymond J. Hallisy, do hereby certify that on the 9th day of May, 19 70, I found evidence of the S 1/16 corner of ~~XX~~ Section 24 Township 33, North, Range 11 & 12E, Fourth, Principal Meridian, as described hereon; and that from this evidence I established a new monument and accessories as described hereon to perpetuate the original location of this corner.

History of original corner establishment:

Corner set in the 1930 resurvey.

Description of corner evidence found:

Found old stake standing, rock mound, marked ~~IXE~~ 1/8 19 24

Resident witnesses:

J. Weir
J. Kryka

Description of monument and accessories I established to perpetuate the original location of this corner.

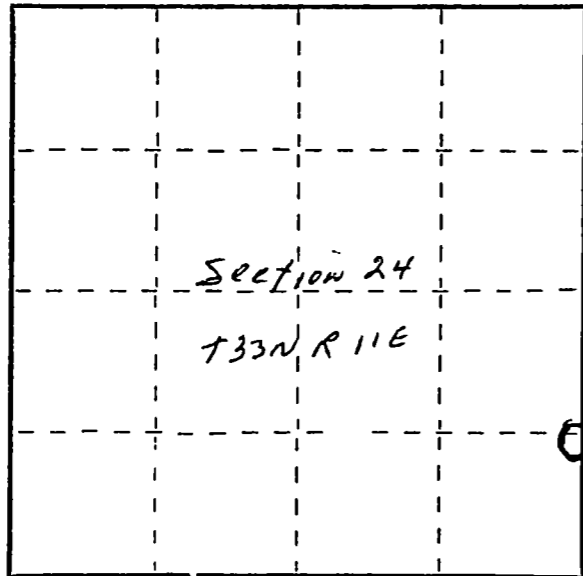
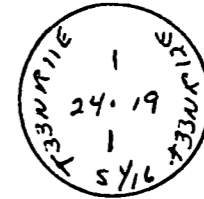
Set 2" pipe with brass cap, rock mound.

New B.T.'s

Red maple 4" N57W 7 Ft. 10 inches

Spruce 5" S58W 18 Ft. 3 inches

B.T.'s faced at base of tree and scribed BT.



○ = Corner monument restored.

Dated at Antigo, Wis., this 9th day of May, 19 70

Signature Raymond J. Hallisy Title Reg. Land Surveyor Registration No. S-685
(County Surveyor, Registered Land Surveyor, or other duly authorized official)

Office of Register of Deeds, County of _____, I hereby certify that the within instrument was filed in this office for record on the _____ day of _____, 19 _____ at _____ o'clock _____ M.

(Register of Deeds)

By _____ Deputy