

CERTIFIED LAND CORNER RESTORATION

Index No. R-23

33-12

State of Wisconsin }
County of Langlade } ss.

I Raymond J. Hallisey, do hereby certify that on the 21st day of April, 19 79, I found evidence of the South 1/4 corner of Section 24 Township _____, North, Range _____, Fourth Principal Meridian, as described hereon; and that from this evidence I established a new monument and accessories as described hereon to perpetuate the original location of this corner.

Resident witnesses:

History of original corner establishment:

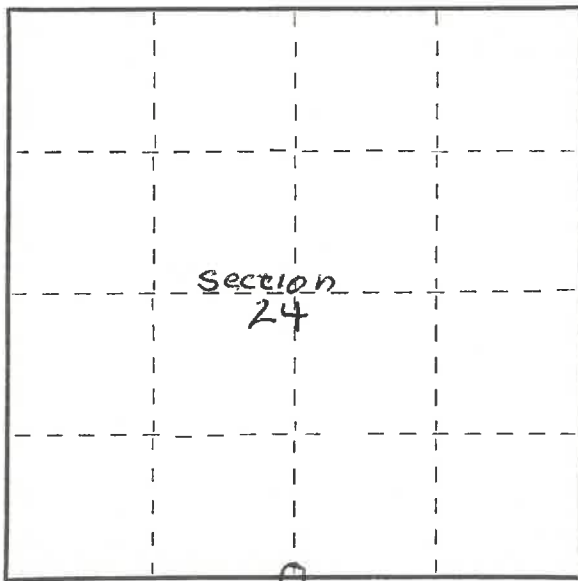
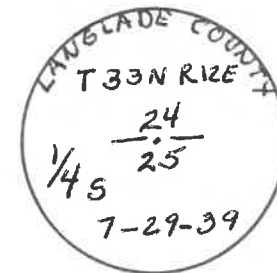
1939 Resurvey

Description of corner evidence found:

4" IRON PIPE WITH BRASS CAP
old B.T.S
Hard maple 8" N19E 60.2 LKS
Black cherry 6" N38W 10.2 LKS

Description of monument and accessories I established to perpetuate the original location of this corner.

New B.T.S
Hard maple 5" S35E 44.5 LKS
" " 6" N82E 51.3 LKS



○ = Corner monument restored.

Dated at Antigo, Wis., this 21st day of April, 19 79.

Signature Raymond J. Hallisey Title Reg. Land Surveyor Registration No. 5685
(County Surveyor, Registered Land Surveyor, or other duly authorized official)

Office of Register of Deeds, County of _____, I hereby certify that the within instrument was filed in this office for record on the _____ day of _____, 19 _____ at _____ o'clock _____ M.

(Register of Deeds)

By _____ Deputy

PLSS field condition report

Date: 4-22-20 Time of day: 10:30 am

By: Cory Ruhlman

Section 24 Town 33 N Range 12 E
(circle corner location on diagram)



Does the monument appear to be tilted, smashed, uprooted, covered or otherwise damaged by the windstorm? YES NO

Are any bearing trees broken, uprooted, missing or otherwise damaged by the windstorm? YES NO

4331224 0020

TAKE PICTURES

For the first four pictures, do them in this order:

Looking north, looking east, looking south, looking west and, by standing about 6 feet behind the monument, include the monument in each picture.

Then take a picture of the top of the monument, close enough to be able to read what is stamped on the cap. Make sure all pictures are in focus.