

CERTIFIED LAND CORNER RESTORATION

Index No. R-25

State of Wisconsin }
County of Langlade } ss.

History of original corner establishment:

1939 RESURVEY

I Raymond J. Hallisy, do hereby certify that on the 21st day of April, 1979, I found evidence of the Section corner of 19, 24, 25, 30 Township 33, North, Range 12, 13 East, Fourth Principal Meridian, as described hereon; and that from this evidence I established a new monument and accessories as described hereon to perpetuate the original location of this corner.

Description of corner evidence found:

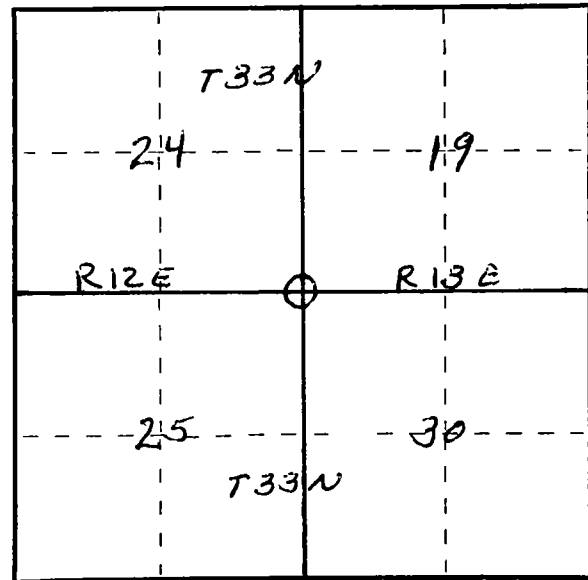
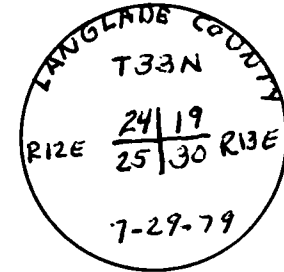
4 inch Iron pipe with Brass cap

Resident witnesses:

.....
.....
.....

Description of monument and accessories I established to perpetuate the original location of this corner.

New B.T.S
Cherry 10" N40E 4'10"
Red Maple 12" N77W 20'4"
Hard Maple 16" N42W 21'9"
" " 74" N12E 19'9"



○ = Corner monument restored.

Dated at Antigo, Wis., this 21st day of April, 1979.

Signature Raymond J. Hallisy Title Reg. Land Surveyor Registration No. 5685
(County Surveyor, Registered Land Surveyor, or other duly authorized official)

Office of Register of Deeds, County of....., I hereby certify that the within instrument was filed in this office for record on the..... day of....., 19..... at..... o'clock..... M.

.....
(Register of Deeds)

By..... Deputy