

CERTIFIED LAND CORNER RESTORATION

Index No. R-13

State of Wisconsin }  
 County of Lan glade } ss.

I, Raymond J. Hallisy, do hereby certify that on the 17th day of June, 1977, I found evidence of the Section corner of 21, 22, 27, & 28 Township 33, North, Range 12E, Fourth Principal Meridian, as described hereon; and that from this evidence I established a new monument and accessories as described hereon to perpetuate the original location of this corner.

Resident witnesses:

.....  
 .....  
 .....

History of original corner establishment:

Corner set in the 1930 resurvey.

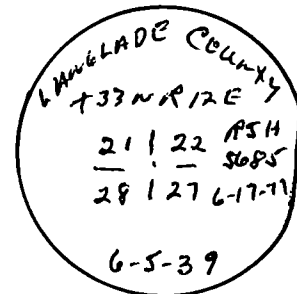
Description of corner evidence found:

Found 4" pipe with brass cap, Well point, Rock mound.

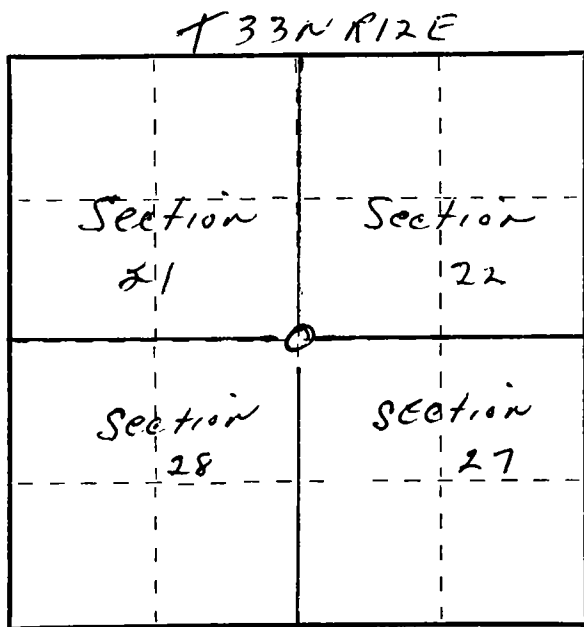
Description of monument and accessories I established to perpetuate the original location of this corner.

New BT's

6" Cherry	N10W	26.8 Ft.
12" Basswood	N68E	27.2 Ft.
8" Basswood	S77W	38.1 Ft.



FORM 985 H. C. MILLER CO., MILWAUKEE



○ = Corner monument restored.

Dated at Antigo, Wis., this 17th day of June, 1977.

Signature Raymond J. Hallisy Title Land Surveyor Registration No. S685  
 (County Surveyor, Registered Land Surveyor, or other duly authorized official)

Office of Register of Deeds, County of Lan glade, I hereby certify that the within instrument was filed in this office for record on the 17th day of June, 1977 at 10 o'clock AM.

.....  
 (Register of Deeds)

By.....Deputy