

U.S. PUBLIC LAND SURVEY MONUMENT RECORD

(Prepared and as required by S. A-E 7.08 WI Administrative Code)

The West 1/4 corner of Section 24, T. 33 N., R. 12 E., Langlade County, WI

Corner was: (check all that apply)

- Restored through acceptance of an obliterated evidence location.
- Restored through acceptance of a found perpetuated location.
- Determined to be lost and re-established through proportionate methods.
(Show bearings and distances to PLSS corners used for proportioning.)
- Restored/recovered/reestablished in a location that differs from a previously established position. (Show difference in plan view below.)

Check here if additional information is shown on the reverse side of this form.

Describe record evidence, recovered physical evidence, occupational evidence, testimonial evidence and all other evidence considered in the recovery/restoration of the corner.

Original survey done by James Nowlin in 1865. At that time the bearing trees were:

- Hemlock 12 N34W 30lks. (gone)
- Hemlock 8 S55E 10 lks. (gone)

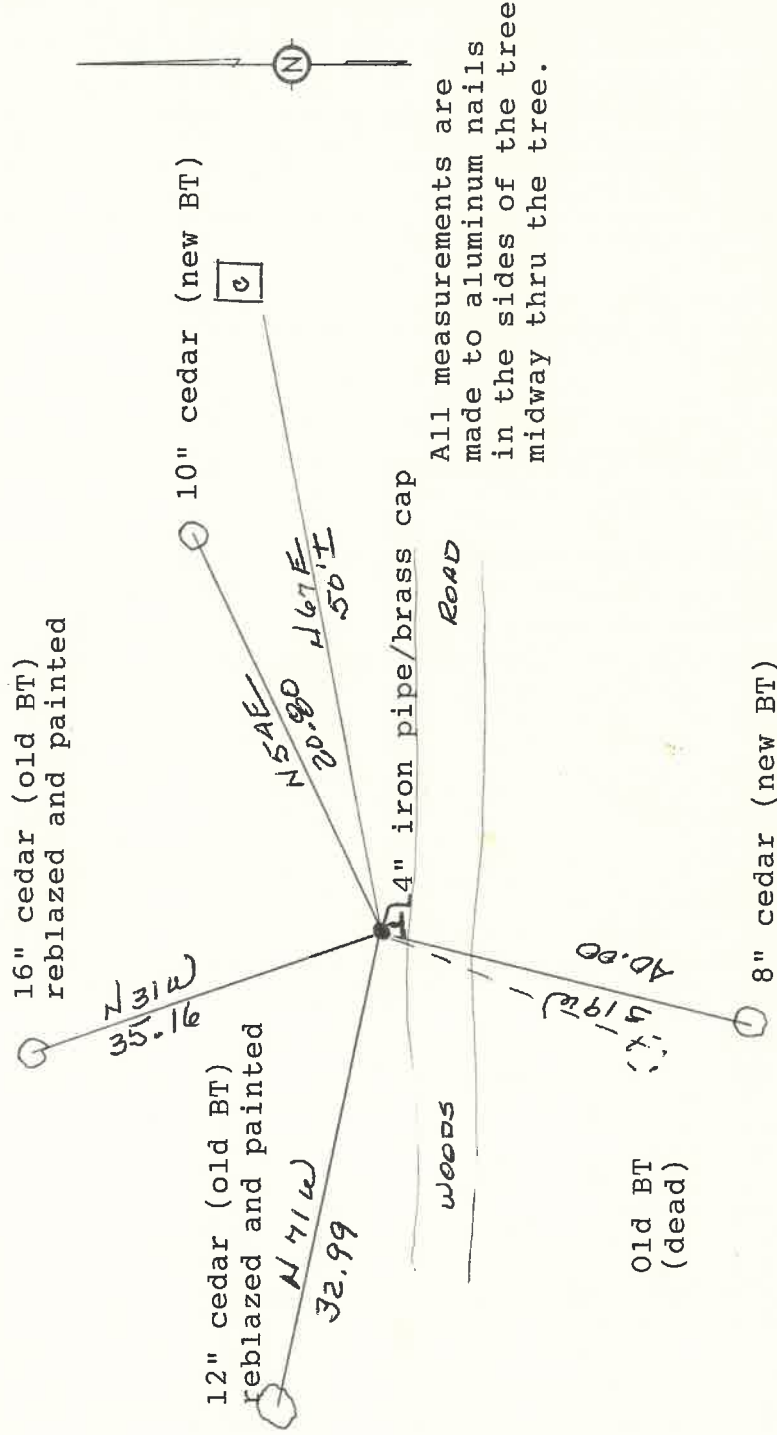
In 1976 Kelly located and made new ties to the corner.

In 1939 the C.C.C. survey crew found and remonumented the corner location with a 4" steel pipe with a brass cap.

Physical description of the monument set:

Found monument that was set by the C.C.C. survey crew in 1939. Monument was a 4" steel pipe with a brass cap. I straightened the monument and renewed or made new ties.

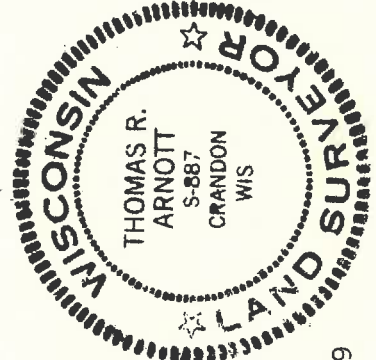
Describe the accessories used to perpetuate the location of the corner. Include a plan view drawing and indicate accessories found/set. Describe measuring point on bearing trees. Show any topographic features that would aid in future recovery of the corner.



All measurements are made to aluminum nails in the sides of the tree midway thru the tree.

The West 1/4 corner of Section 24, T. 33 N., R. 12 E., Langlade County, WI

SURVEYORS SEAL



I, Thomas Arnott, certify that the corner location shown on this record was determined by me or under my direction and control and that this U.S. Public Land Survey Monument Record is correct and complete to the best of my knowledge and belief.

Thomas Arnott 24 June 1999
Signature Date

INDEX No. P21

○ = Location of corner

CERTIFIED LAND CORNER RESTORATION

Index No. P-21

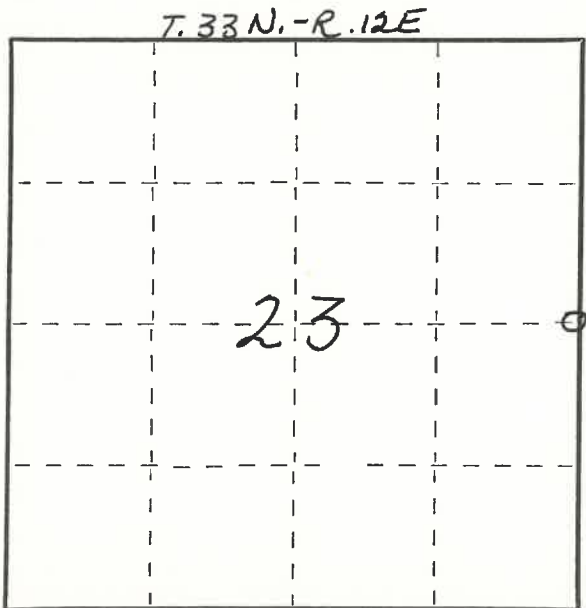
State of Wisconsin }
 County of LANGLADE } ss.

I WILLIAM F. KELLY, do hereby certify that on the 13TH day of AUGUST, 1976, I found evidence of the EAST 1/4 corner of SECTION 23 Township 33, North, Range 12E, Fourth Principal Meridian, as described hereon; and that from this evidence I established a new monument and accessories as described hereon to perpetuate the original location of this corner.

Resident witnesses:

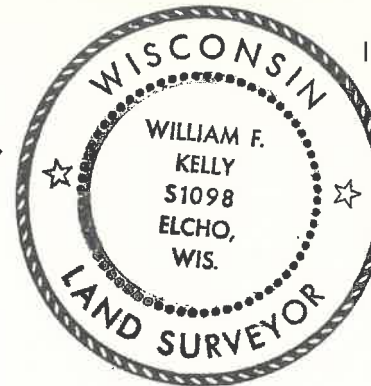
E. MONTOUR

FORM 985 H. C. MILLER CO., MILWAUKEE



○ = Corner monument restored.

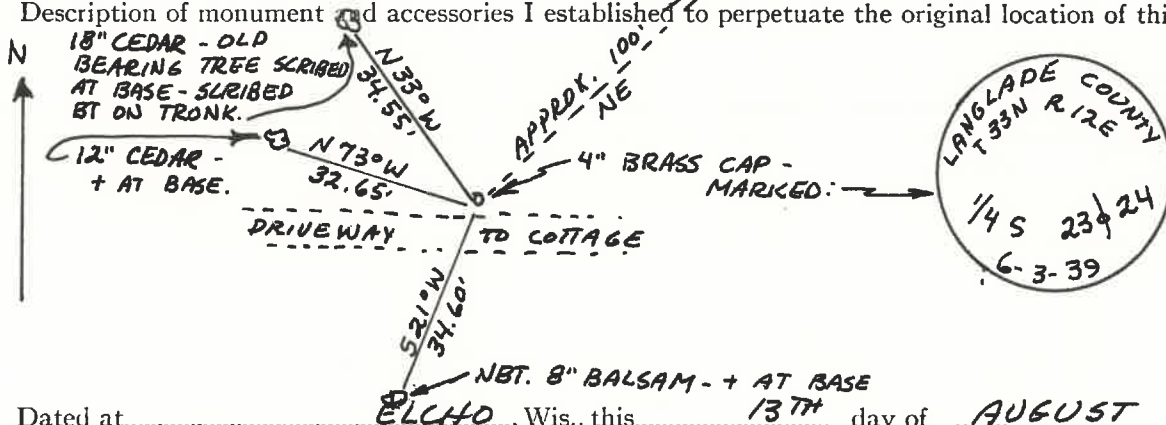
History of original corner establishment:
CORNER SET ON RESURVEY IN 1939.



Description of corner evidence found:
ONE OLD BEARING TREE SCRIBED,
4" PIPE WITH BRASS CAP SET IN CONCRETE - FLUSH WITH GROUND

William F. Kelly

Description of monument and accessories I established to perpetuate the original location of this corner.



Dated at ELCHO, Wis., this 13TH day of AUGUST, 1976

Signature William F. Kelly Title REGISTERED LAND SURVEYOR Registration No. 51098
 (County Surveyor, Registered Land Surveyor, or other duly authorized official)

Office of Register of Deeds, County of _____, I hereby certify that the within instrument was filed in this office for record on the _____ day of _____, 19____ at _____ o'clock _____ M.

(Register of Deeds)

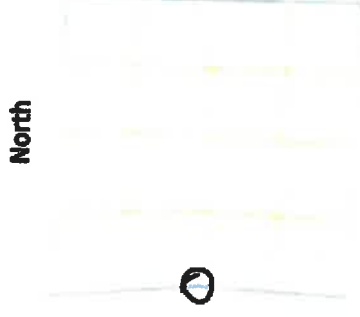
By _____ Deputy

PLSS field condition report

Date: 4-28-20 Time of day: 11:00 am

By: Cory Buhlend

Section 24 Town 33N Range 12E
(circle corner location on diagram)



Does the monument appear to be tilted, smashed, uprooted, covered or otherwise damaged by the windstorm? YES NO

Are any bearing trees broken, uprooted, missing or otherwise damaged by the windstorm? YES NO

Cedar 12" old bearing tree is dying.

4331223 2000

TAKE PICTURES

For the first four pictures, do them in this order:

Looking north, looking east, looking south, looking west and, by standing about 6 feet behind the monument, include the monument in each picture.

Then take a picture of the top of the monument, close enough to be able to read what is stamped on the cap. Make sure all pictures are in focus.

*P21
33-12*