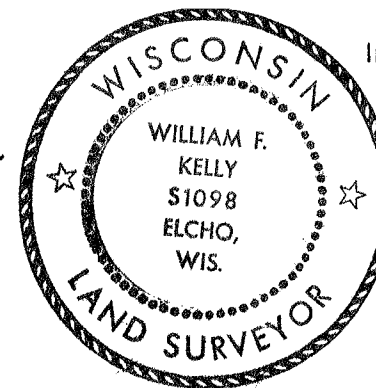


CERTIFIED LAND CORNER RESTORATION

Index No. P-21

State of Wisconsin }  
County of LANGLADE } ss.

History of original corner establishment:  
CORNER SET ON RESURVEY IN 1939.



I WILLIAM F. KELLY, do hereby certify that on the 13TH day of AUGUST, 1976, I found evidence of the EAST 1/4 corner of SECTION 23 Township 33, North, Range 12E, Fourth Principal Meridian, as described hereon; and that from this evidence I established a new monument and accessories as described hereon to perpetuate the original location of this corner.

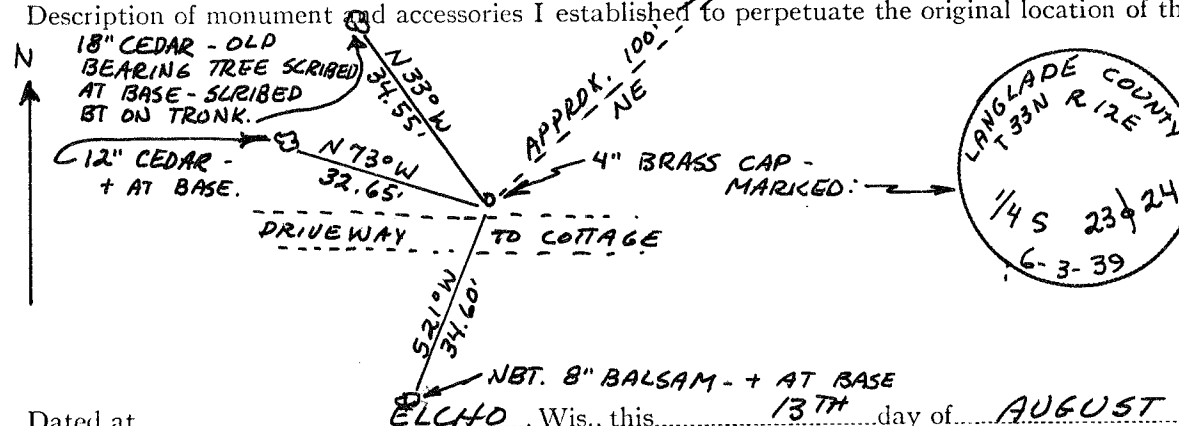
Description of corner evidence found:  
ONE OLD BEARING TREE SCRIBED,  
4" PIPE WITH BRASS CAP SET IN CONCRETE - FLUSH WITH GROUND

*William F. Kelly*

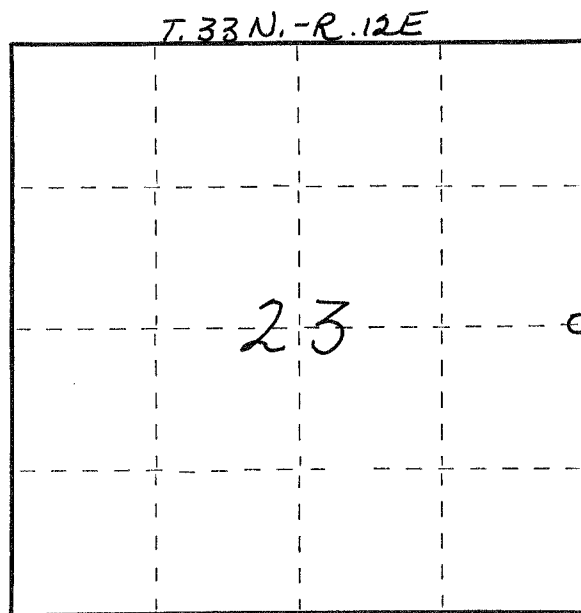
Resident witnesses:

E. MONTOUR

Description of monument and accessories I established to perpetuate the original location of this corner.



FORM 965 H. C. MILLER CO., MILWAUKEE



○ = Corner monument restored.

Dated at ELCHO, Wis., this 13TH day of AUGUST, 1976

Signature William F. Kelly Title REGISTERED LAND SURVEYOR Registration No. 51098  
(County Surveyor, Registered Land Surveyor, or other duly authorized official)

Office of Register of Deeds, County of \_\_\_\_\_, I hereby certify that the within instrument was filed in this office for record on the \_\_\_\_\_ day of \_\_\_\_\_, 19\_\_\_\_ at \_\_\_\_\_ o'clock \_\_\_\_\_ M.

(Register of Deeds)

By \_\_\_\_\_ Deputy