

CERTIFIED LAND CORNER RESTORATION

Index No. R-19

State of Wisconsin }
County of Lan glade } ss.

I, Raymond J. Hallisy, do hereby certify that on the 18th day of October, 1980, I found evidence of the 1/4 corner of Section 23 & 26 Township 33, North, Range 12E, Fourth Principal Meridian, as described hereon; and that from this evidence I established a new monument and accessories as described hereon to perpetuate the original location of this corner.

Resident witnesses:

.....
.....
.....

History of original corner establishment:

Corner reset in the 1930 resurvey.

Description of corner evidence found:

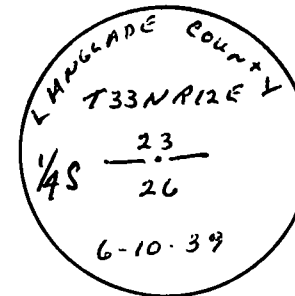
4" pipe with brass cap, rock mound.
Old BT's

20" Elm S7E 56.7 Links
Yellow Birch Stump S5W 10 Links

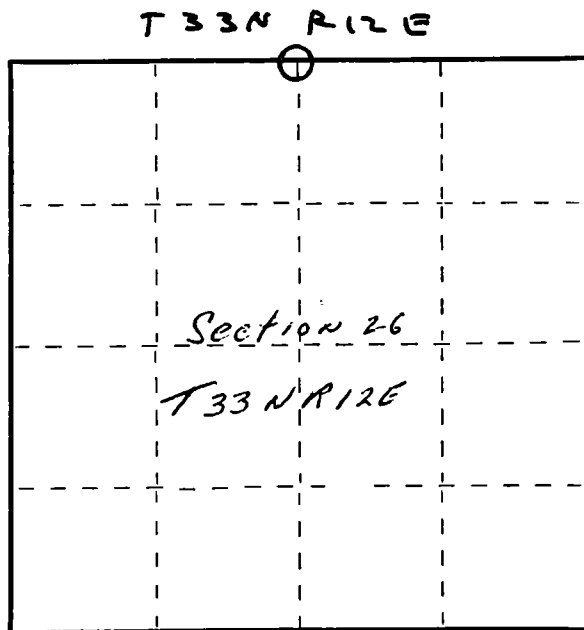
Description of monument and accessories I established to perpetuate the original location of this corner.

New BT's

6" Hard Maple N44E 5' 3"
8" Hard Maple S15E 12' 7"
10" Hard Maple S62W 5'



FORM 985 M. C. MILLER CO., MILWAUKEE



○ = Corner monument restored.

Dated at Antigo, Wis., this 18th day of October, 1980.

Signature Raymond J. Hallisy Title Reg. Surveyor Registration No. S-685
(County Surveyor, Registered Land Surveyor, or other duly authorized official)

Office of Register of Deeds, County of, I hereby certify that the within instrument was filed in this office for record on the day of, 19..... at o'clock M.

.....
(Register of Deeds)

By..... Deputy