

# LANGLADE COUNTY U.S. PUBLIC LAND CORNER RESTORATION

The Southeast corner of Section 23, T. 33 N., R. 12 E., Langlade County, WI.

Corner was: (check all that apply) 4331223 0000 2020

- Restored through acceptance of an obliterated evidence location.
- Restored through acceptance of a found perpetuated location.
- Determined to be lost and re-established through proportionate methods.
  - Show bearings and distances to PLSS corners used for proportioning, and show original distances).
  - Restored/recovered/re-established in a location that differs from a previously established position.
- (Show difference in plan view below).
- Check here if additional information is shown on the reverse side of this form.

**Describe record evidence, recovered physical evidence, occupational evidence, testimonial evidence and all other evidence considered in the recovery/restoration of the corner.**

The original corner was established in 1865 by James L. Nowlin. Original bearing trees: spruce, 8", N40W, 15 links and a spruce, 10", N56W, 35 links.

In the 1930's resurvey of part of this township, the corner was described as: "Found scribed stake and old cedar, 8", N69E, 31.4 links. New cedar, 6", S18E, 29.2 links."  
On March 23, 2016, D. Tlusty and Rick Dedejne found the 1930's monument in good condition. Found rebar ties set by someone who didn't file a tie sheet. Measured to existing rebars as shown below.

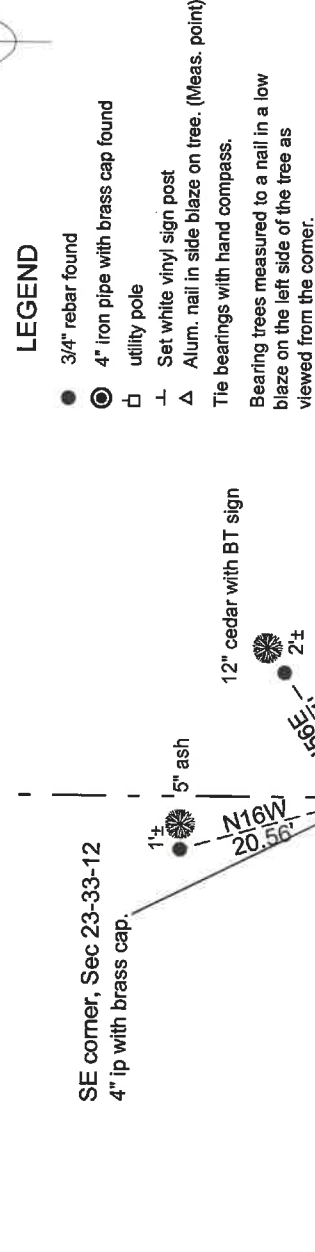
**Physical description of the monument set:**

Found 4" iron pipe with brass cap, upright in good condition. Top up 24" above ground. .  
Corner is approx. 50 feet east of N-S woods road. Found white vinyl sign post 0.5' from monument.  
Set green steel channel post with "Forest Boundary" sign, NE, 0.9'.

**Describe the accessories used to perpetuate the corner. Include a plan view drawing and accessories found/set. Describe measuring point on bearing trees. Show any topographic features that would aid in future recovery of the corner.**

Langlade County Coordinates NAD83(91)  
N 406064.140 E 673225.800 4INIPBCFND3XRTKAVE

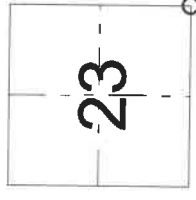
Field book 13-55



**LEGEND**

- 3/4" rebar found
- ⊙ 4" iron pipe with brass cap found
- ⊠ utility pole
- ⊥ Set white vinyl sign post
- △ Alum. nail in side blaze on tree. (Meas. point)
- Tie bearings with hand compass.
- Bearing trees measured to a nail in a low blaze on the left side of the tree as viewed from the corner.

Index No. R21 33-12



○ = corner perpetuated  
The Southeast corner of Section 23, T. 33 N., R. 12 E., Langlade County, WI



*David E. Tlusty*  
3/15/2020

I, David E. Tlusty, Registered Land Surveyor, as Langlade County Surveyor, certify that the corner location on this record was determined by me and that this U.S. Public Land Survey Monument Record is correct to the best of my knowledge and belief.