

CERTIFIED LAND CORNER RESTORATION

Index No. P-17

State of Wisconsin }  
County of Langlade } ss.

History of original corner establishment:

Corner reset in the 1930 resurvey.

I Raymond J. Hallisy, do hereby certify that on the 18th day of October, 1980, I found evidence of the 1/4 corner of Section 23 & 23 Township 33, North, Range 12E, Fourth Principal Meridian, as described hereon; and that from this evidence I established a new monument and accessories as described hereon to perpetuate the original location of this corner.

Description of corner evidence found:

4" pipe with brass cap, and a rock mound.

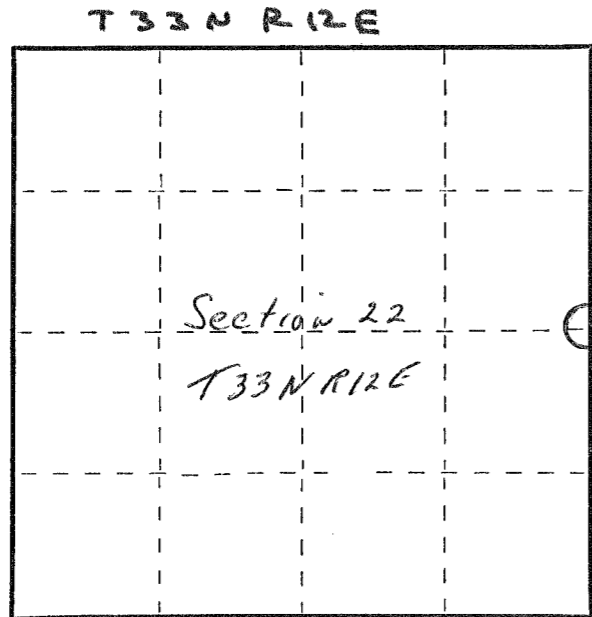
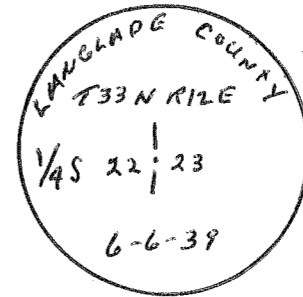
Resident witnesses:

.....  
.....  
.....

Description of monument and accessories I established to perpetuate the original location of this corner.

New BT's

- 10" Hard Maple S20W 18'8"
- 10" Forked Basswood N40W 24'5"
- 6" Hard Maple S80E 26'3"



○ = Corner monument restored.

Dated at Antigo, Wis., this 18th day of October, 1980

Signature Raymond J. Hallisy Title Reg. Surveyor Registration No. S-685  
(County Surveyor, Registered Land Surveyor, or other duly authorized official)

Office of Register of Deeds, County of \_\_\_\_\_, I hereby certify that the within instrument was filed in this office for record on the \_\_\_\_\_ day of \_\_\_\_\_, 19\_\_\_\_ at \_\_\_\_\_ o'clock \_\_\_\_\_ M.

(Register of Deeds)

By \_\_\_\_\_ Deputy

FORM 965 H. C. MILLER CO., MILWAUKEE