

CERTIFIED LAND CORNER RESTORATION

Index No. R-15

State of Wisconsin }
County of Lanclade } ss.

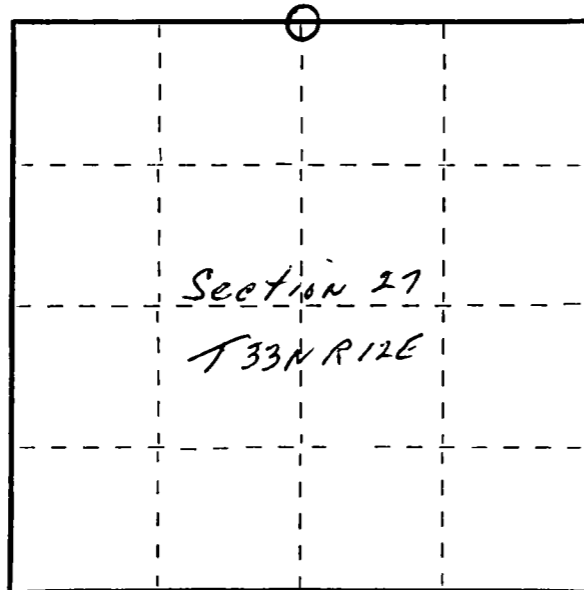
I, Raymond J. Hallisy, do hereby certify that on the 7th day of February, 1981, I found evidence of the 1/4 corner of Section 22 & 27 Township 33, North, Range 12E, Fourth Principal Meridian, as described hereon; and that from this evidence I established a new monument and accessories as described hereon to perpetuate the original location of this corner.

Resident witnesses:

.....
.....
.....

FORM 985 H. C. MILLER CO., MILWAUKEE

T 33 N R 12 E



○ = Corner monument restored.

History of original corner establishment:

Corner reset in the 1930 resurvey.

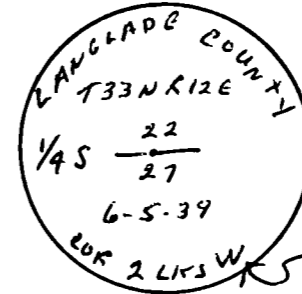
Description of corner evidence found:

Stone with X, 4" pipe with brass cap as a witness corner 2 Links West
Brass cap is marked wrong, it reads Cor. 2 lks W, it should read Cor. 2 lks E.

Description of monument and accessories I established to perpetuate the original location of this corner.

New ET's to true corner (Stone)

- 14" Hard Maple N18E 11'10"
- 12" Hard Maple S35E 9'8"
- 8" Hard Maple N82W 2'2"



Dated at Antigo, Wis., this 7th day of February, 1981

Signature Raymond J. Hallisy Title Reg. Surveyor Registration No. S-685
(County Surveyor, Registered Land Surveyor, or other duly authorized official)

Office of Register of Deeds, County of....., I hereby certify that the within instrument was filed in this office for record on the..... day of....., 19..... at..... o'clock..... M.

.....
(Register of Deeds)

By..... Deputy