

# LANGLADE COUNTY U.S. PUBLIC LAND CORNER RESTORATION

The Southeast corner of Section 22, T. 33 N., R. 12 E., Langlade County, WI.

4331222 0000 2020

**Corner was: (check all that apply)**

- Restored through acceptance of an obliterated evidence location.
- Restored through acceptance of a found perpetuated location.
- Determined to be lost and re-established through proportionate methods.
- Show bearings and distances to PLSS corners used for proportioning, and show original distances).
- Restored/recovered/re-established in a location that differs from a previously established position.
- (Show difference in plan view below).
- Check here if additional information is shown on the reverse side of this form.

**Describe record evidence, recovered physical evidence, occupational evidence, testimonial evidence and all other evidence considered in the recovery/restoration of the corner.**

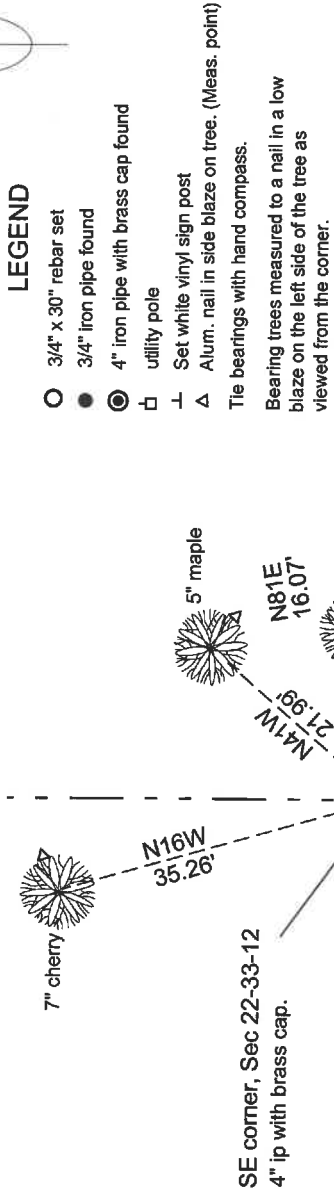
The original corner was established in 1865 by James L. Nowlin. Original bearing trees: sugar, 15", N34E, 50 links and a hemlock, 18", N34E, 50 links.  
 In the 1930's resurvey of part of this township, the corner was described as: "Found plain stake and roots of orig. new maple, N35W, 28.9 links and lind, 14", S55W, 21.7 links."  
 In 1980, Ray Hallisy found the 1930's monument in rock mound. Found 1930 basswood BT. Marked three new basswood BT's. On March 23, 2016, D. Tlusty and Rick Dedejne found the 1930's monument solid in ground and in good condition. but leans slightly SE. Accepted monument as found after checking Hallisy's overgrown BT N8E.

**Physical description of the monument set:**

Accepted existing monument as found; made 4 new BT's shown below.

**Describe the accessories used to perpetuate the corner. Include a plan view drawing and accessories found/set. Describe measuring point on bearing trees. Show any topographic features that would aid in future recovery of the corner.**

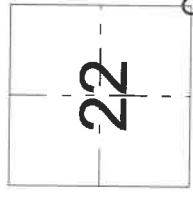
Field book 13-53



**LEGEND**

- 3/4" x 30" rebar set
- 3/4" iron pipe found
- ⊙ 4" iron pipe with brass cap found
- utility pole
- ⊥ Set white vinyl sign post
- △ Alum. nail in side blaze on tree. (Meas. point)
- Tie bearings with hand compass.
- Bearing trees measured to a nail in a low blaze on the left side of the tree as viewed from the corner.

Index No.                      R17 33-12



○ = corner perpetuated

The Southeast corner of Section 22, T. 33 N., R. 12 E., Langlade County, WI

*David E. Tlusty*  
 3/4/2020

I, David E. Tlusty, Registered Land Surveyor, as Langlade County Surveyor, certify that the corner location on this record was determined by me and that this U.S. Public Land Survey Monument Record is correct to the best of my knowledge and belief.

CERTIFIED LAND CORNER RESTORATION

Index No. R-17

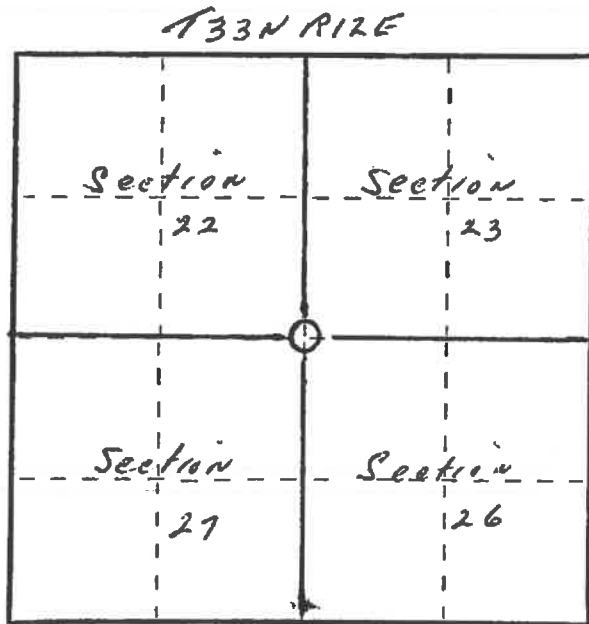
State of Wisconsin }  
County of Langlade } ss.

I, Raymond J. Hallisy, do hereby certify that on the 18th day of October, 1980, I found evidence of the Section corner of 22, 23, 26, & 27 Township 33, North, Range 12E, Fourth Principal Meridian, as described hereon; and that from this evidence I established a new monument and accessories as described hereon to perpetuate the original location of this corner.

Resident witnesses:

.....  
.....  
.....

FORM 985 M. C. MILLER CO., MILWAUKEE



○ = Corner monument restored.

History of original corner establishment:

Corner reset in the 1930 resurvey.

Description of corner evidence found:

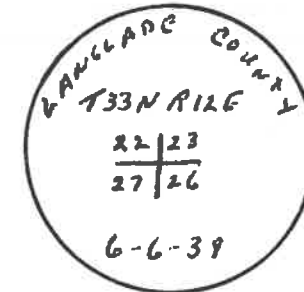
4" pipe with brass cap, rock mound.  
Old BT  
22" Basswood S55W 21.7 Links.

Description of monument and accessories I established to perpetuate the original location of this corner.

New BT's

12"	Basswood	N73E	25'
4"	Basswood	N60E	2'5"
9"	Basswood	N8E	13'3"

Location poster approx. 4 chains West on East side of logging road.



Dated at Antigo, Wis., this 18th day of October, 1980

Signature Raymond J. Hallisy Title Reg. Surveyor Registration No. S-685  
(County Surveyor, Registered Land Surveyor, or other duly authorized official)

Office of Register of Deeds, County of....., I hereby certify that the within instrument was filed in this office for record on the..... day of....., 19..... at..... o'clock..... M.

.....  
(Register of Deeds)

By..... Deputy