

CERTIFIED LAND CORNER RESTORATION

Index No. 0-13

State of Wisconsin }
County of LANGLADE } ss.

History of original corner establishment:

SET IN THE 1930 RESURVEY

I RAYMOND S. HALLISY, do hereby certify that on the 23RD day of MARCH, 1985, I found evidence of the N 1/4 corner of SECTION 21 & 22 Township 33, North, Range 12E, Fourth Principal Meridian, as described hereon; and that from this evidence I established a new monument and accessories as described hereon to perpetuate the original location of this corner.

Description of corner evidence found:

4" WOOD POST ON SOUTH EDGE OF KEG

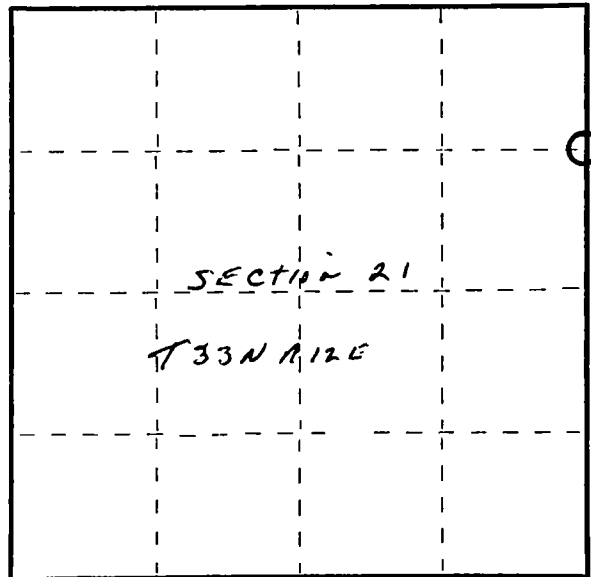
Resident witnesses:

.....
.....
.....

Description of monument and accessories I established to perpetuate the original location of this corner.

NEW BT'S

7" YELLOW BIRCH	S 28 W	18.8'
10" YELLOW BIRCH	S 10 E	20.7'
3" HARD MAPLE	S 41 E	9.1'
10" YELLOW BIRCH	N 61 E	11.4'



○ = Corner monument restored.

Dated at ANTIGO Wis., this 23RD day of MARCH, 1985

Signature Raymond S. Hallisy Title LAND SURVEYOR Registration No. 5685
(County Surveyor, Registered Land Surveyor, or other duly authorized official)

Office of Register of Deeds, County of....., I hereby certify that the within instrument was filed in this office for record on the.....day of....., 19..... at.....o'clock..... M.

.....
(Register of Deeds)

By.....Deputy