

CERTIFIED LAND CORNER RESTORATION

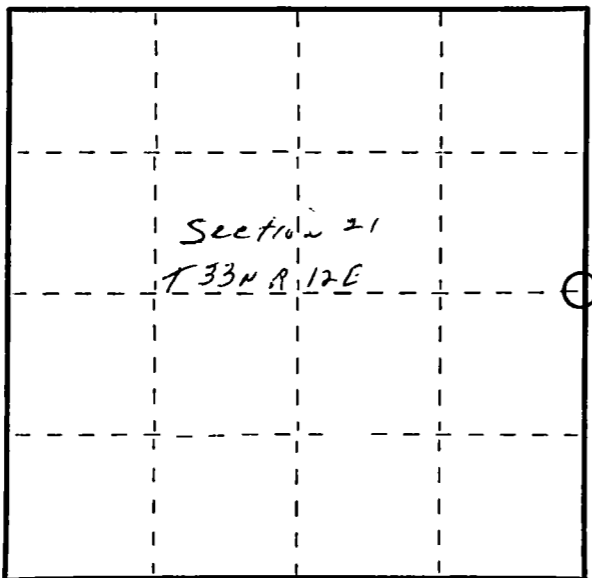
Index No. P-13

State of Wisconsin }
County of Langlade } ss.

I, Raymond J. Hallisy, do hereby certify that on the 15th day of September, 1984, I found evidence of the 1/4 corner of Section 21 & 22 Township 33, North, Range 12E, Fourth Principal Meridian, as described hereon; and that from this evidence I established a new monument and accessories as described hereon to perpetuate the original location of this corner.

Resident witnesses:

.....
.....
.....



○ = Corner monument restored.

History of original corner establishment:

1930 resurvey.

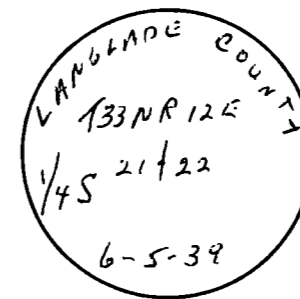
Description of corner evidence found:

4" iron pipe with brass cap, rock mound.

Description of monument and accessories I established to perpetuate the original location of this corner.

Marked new BT's

- 5" Hard maple N38P 36.5 Ft.
- 5" Hard maple N38W 16.8 "
- 4" Hard maple S89W 22.2 "
- 3" Hard maple S36W 19 "



Dated at Antigo, Wis., this 15th day of September, 1984.

Signature Raymond J. Hallisy Title Land Surveyor Registration No. S-685
(County Surveyor, Registered Land Surveyor, or other duly authorized official)

Office of Register of Deeds, County of Langlade, I hereby certify that the within instrument was filed in this office for record on the 15th day of September, 1984 at 10 o'clock AM.

.....
(Register of Deeds)

By..... Deputy