

CERTIFIED LAND CORNER RESTORATION

Index No. R-11

State of Wisconsin }
County of LANGLADE } ss.

I RAYMOND J. HALL, do hereby certify that on the 27 TH day of AUGUST, 1977, I found evidence of the 1/4 corner of SECTION 28 Township 33, North, Range 12E, Fourth Principal Meridian, as described hereon; and that from this evidence I established a new monument and accessories as described hereon to perpetuate the original location of this corner.

Resident witnesses:
.....
.....
.....

History of original corner establishment:

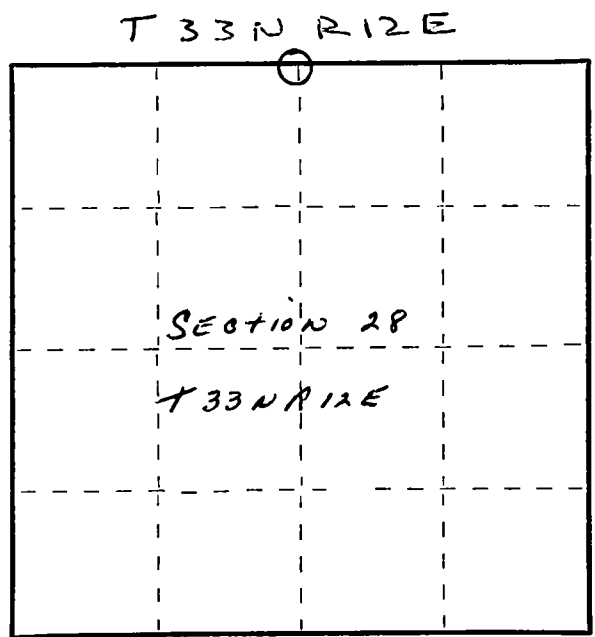
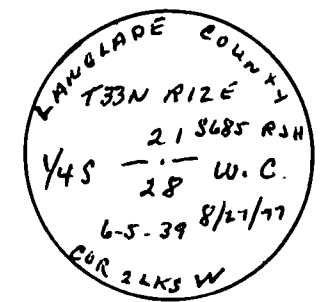
CORNER SET IN THE 1930 RESURVEY

Description of corner evidence found:

STONE WITH X ON TOP
4" IRON PIPE WITH BRASS CAP 2 LINKS EAST AS WITNESS CORNER
12" HARD MAPLE BT. N45E 41.5 LINKS

Description of monument and accessories I established to perpetuate the original location of this corner.

NEW BT'S
12" RED MAPLE S28E 3'4"
6" HARD MAPLE N64W 8'3"
6" HARD MAPLE S16W 17'11"



○ = Corner monument restored.

Dated at ANTIGO, Wis., this 27 TH day of AUGUST, 1977.

Signature Raymond J. Hall Title LAND SURVEYOR Registration No. 5685
(County Surveyor, Registered Land Surveyor, or other duly authorized official)

Office of Register of Deeds, County of, I hereby certify that the within instrument was filed in this office for record on the day of, 19..... at o'clock M.

.....
(Register of Deeds)

By..... Deputy

FORM 985 H. C. MILLER CO., MILWAUKEE