

CERTIFIED LAND CORNER RESTORATION

Index No. P-9

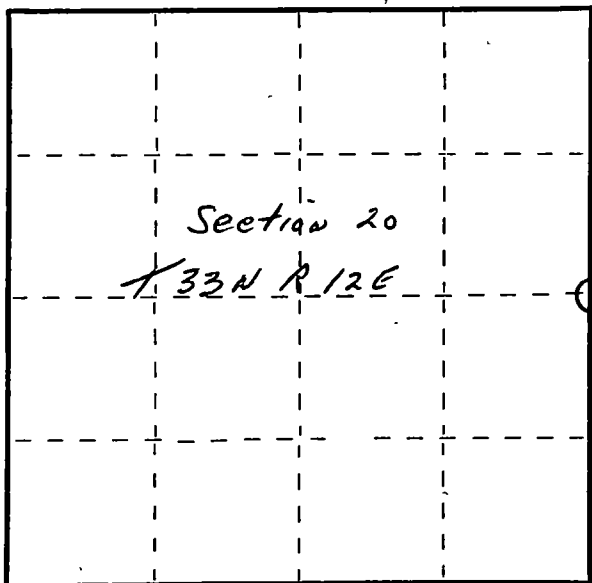
State of Wisconsin }
County of Langlade } ss.

I, Raymond J. Hallisy, do hereby certify that on the 30th day of October, 1982, I found evidence of the 1/4 corner of Section 20 & 21 Township 33 12E, North, Range 12E, Fourth Principal Meridian, as described hereon; and that from this evidence I established a new monument and accessories as described hereon to perpetuate the original location of this corner.

Resident witnesses:

.....
.....
.....

FORM 985 H. C. MILLER CO., MILWAUKEE



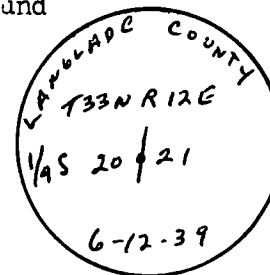
○ = Corner monument restored.

History of original corner establishment:

Corner set in the 1930 resurvey.

Description of corner evidence found:

4" pipe with brass cap, rock mound



Description of monument and accessories I established to perpetuate the original location of this corner.

New BT's

16" Hard Maple	N66E	43'
8" Basswood	N45W	10.8'
10" Hard Maple	S 66E	31.2'

Dated at Antigo, Wis., this 30th day of October, 1982

Signature Raymond J. Hallisy Title Land Surveyor Registration No. S-685
(County Surveyor, Registered Land Surveyor, or other duly authorized official)

Office of Register of Deeds, County of....., I hereby certify that the within instrument was filed in this office for record on the.....day of....., 19..... at.....o'clock..... M.

(Register of Deeds)

By..... Deputy