

CERTIFIED LAND CORNER RESTORATION

Index No. R-9

State of Wisconsin }  
County of Langlade } ss.

I, Raymond J. Hallisy, do hereby certify that on the 19th day of June, 1977, I found evidence of the Section corner of 20, 21, 28 & 29 Township 33 12E, North, Range 12E, Fourth Principal Meridian, as described hereon; and that from this evidence I established a new monument and accessories as described hereon to perpetuate the original location of this corner.

Resident witnesses:

.....  
.....  
.....

History of original corner establishment:

Corner set in the 1930 resurvey.

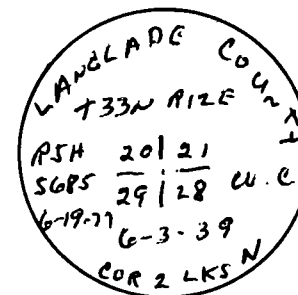
Description of corner evidence found:

Stone with + on top, 4" pipe with brass cap as Witness Corner 2 Links South.

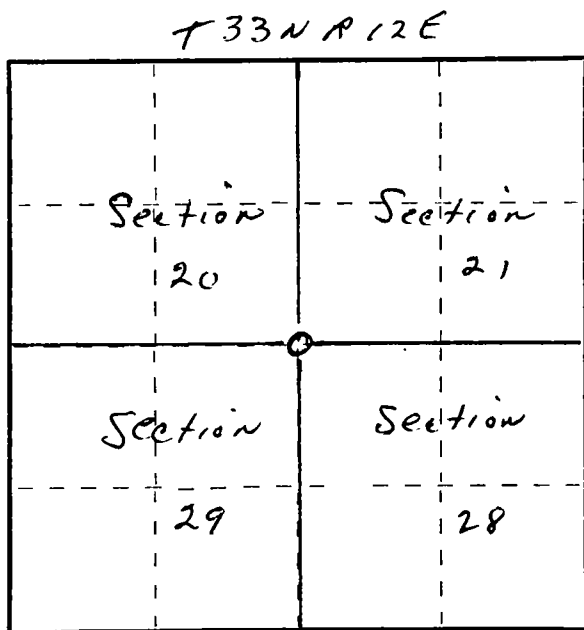
Description of monument and accessories I established to perpetuate the original location of this corner.

New BT's

5" Elm N13E 26 Ft.  
5" Elm S86E 19.8 Ft.  
12" Basswood S42E 16.4 Ft.



FORM 985 K. C. MILLER CO., MILWAUKEE



○ = Corner monument restored.

Dated at Antigo, Wis., this 19th day of June, 1977

Signature Raymond J. Hallisy Title Land Surveyor Registration No. 5685  
(County Surveyor, Registered Land Surveyor, or other duly authorized official)

Office of Register of Deeds, County of Langlade, I hereby certify that the within instrument was filed in this office for record on the 19th day of June, 1977 at 10 o'clock 10 M.

.....  
(Register of Deeds)

By..... Deputy