

CERTIFIED LAND CORNER RESTORATION

Index No. P-5

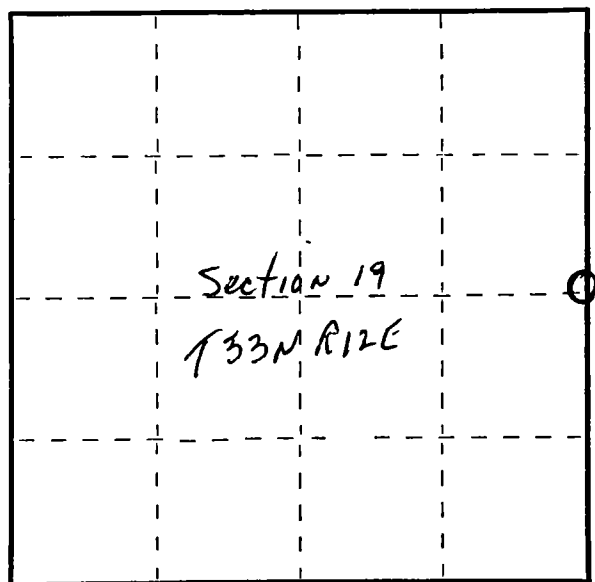
State of Wisconsin }
County of Lanclade } ss.

I, Raymond J. Hallisey, do hereby
certify that on the 12th day
of April, 1980, I found
evidence of the 1/4
corner of Section 19 & 20
Township 33, North, Range
12E, Fourth Principal Meridian,
as described hereon; and that from this evidence
I established a new monument and accessories
as described hereon to perpetuate the original
location of this corner.

Resident witnesses:

.....
.....
.....

FORM 985 M. C. MILLER CO., MILWAUKEE



○ = Corner monument restored.

History of original corner establishment:

Corner set in the 1930 resurvey.

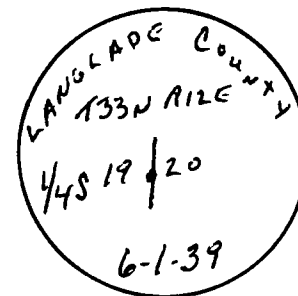
Description of corner evidence found:

4" iron pipe with brass cap, rock mound.

Description of monument and accessories I established to perpetuate the original location of this corner.

New BT's

12"	Hard Maple	N33E	2'6"
8"	Basswood	N67W	6'1"
5"	Hard Maple	S38W	7'6"



Dated at Antigo, Wis., this 12th day of April, 1980...

Signature Raymond J. Hallisey Title Land Surveyor Registration No. S-685
(County Surveyor, Registered Land Surveyor, or other duly authorized official)

Office of Register of Deeds, County of _____, I hereby certify that the within
instrument was filed in this office for record on the _____ day of _____, 19____
at _____ o'clock _____ M.

.....
(Register of Deeds)

By..... Deputy